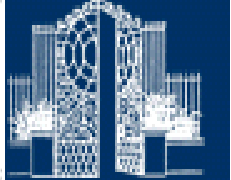


Fiesole Retreat
Athens, April 5-7, 2022
National Library of Greece

**Getting on the map:
Greek libraries and users' modern
geographical information needs**

Ifigenia Vardakosta, PhD
Head Librarian
Harokopio University
Library & Information Centre
ifigenia@hua.gr



Athens
2022

Outline

1. Geographical information in every day life
2. Map/GIS Libraries in western world
3. Greek Libraries and Geographical Information



1. Geographical information in every day life (1/)

«Almost everything that happens happens somewhere on earth. It is crucial to know the "where" something is taking place»

(Longley et.al., 2021, p.23)

- Politics
- Economy
- Health
- Environment
- Land use
- Travels
- Demography
- Genealogy
-

1. Geographical information in every day life : Some examples

WHO Coronavirus (COVID-19) Dashboard

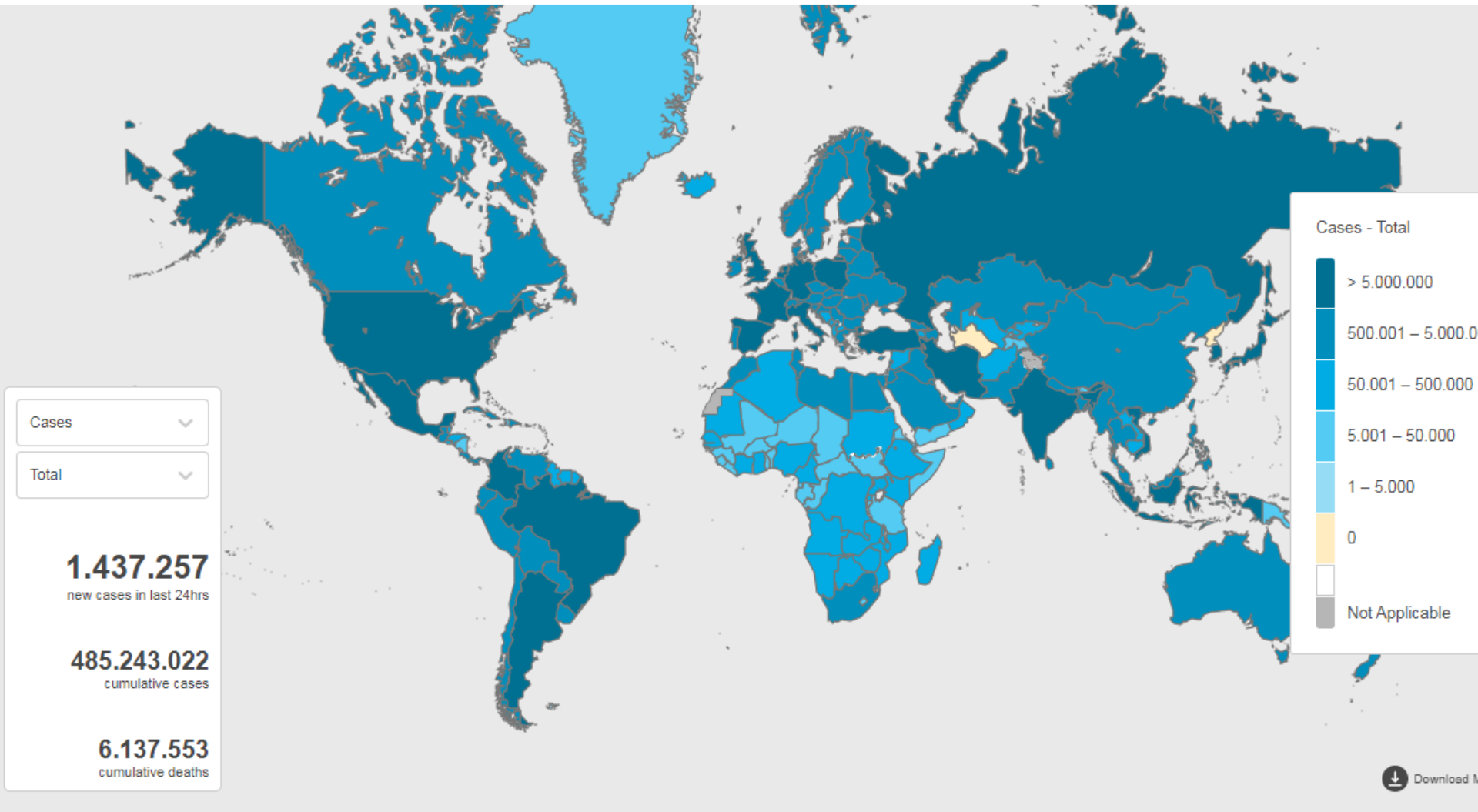
[Overview](#)

Measures

Table View

Data

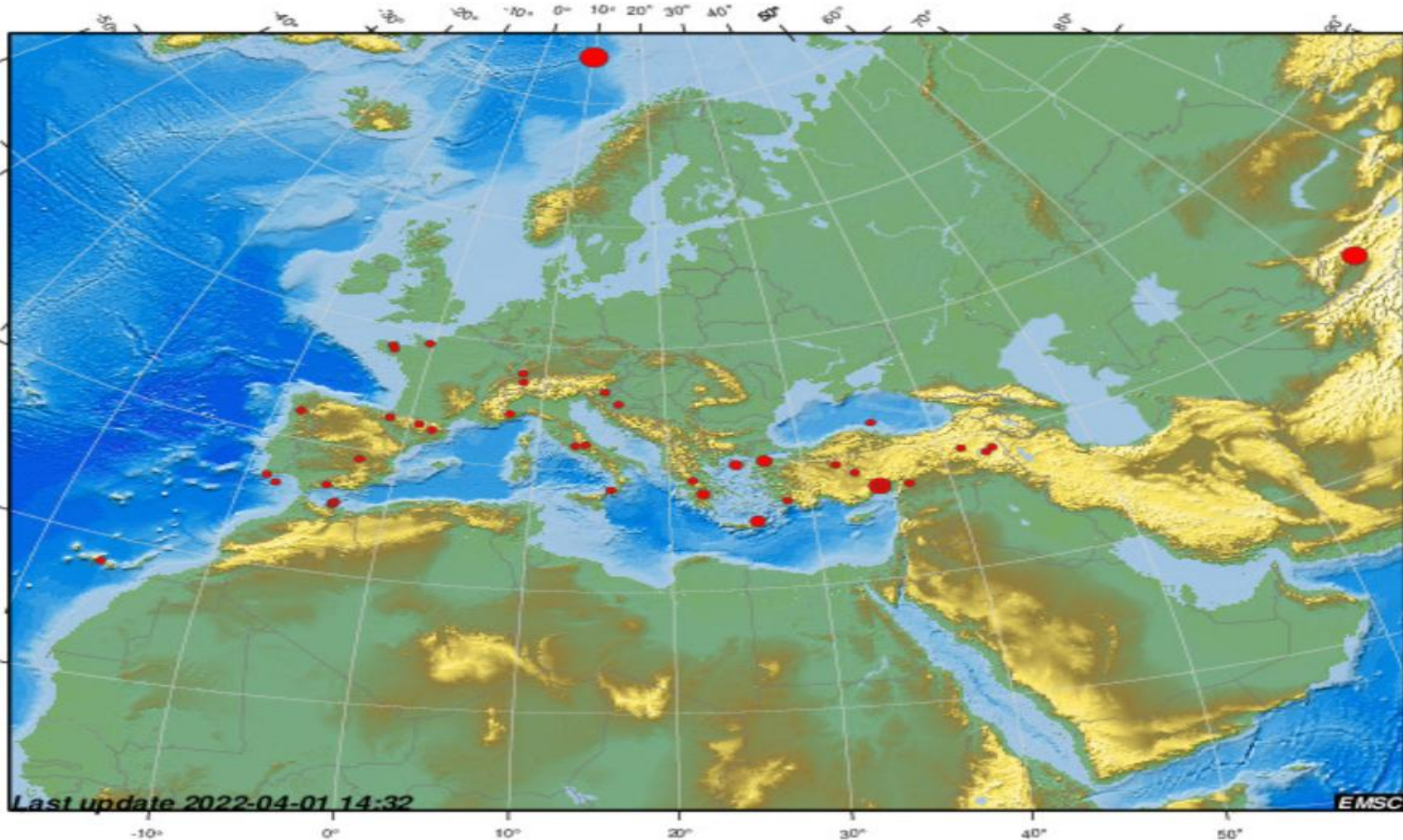
More Resources



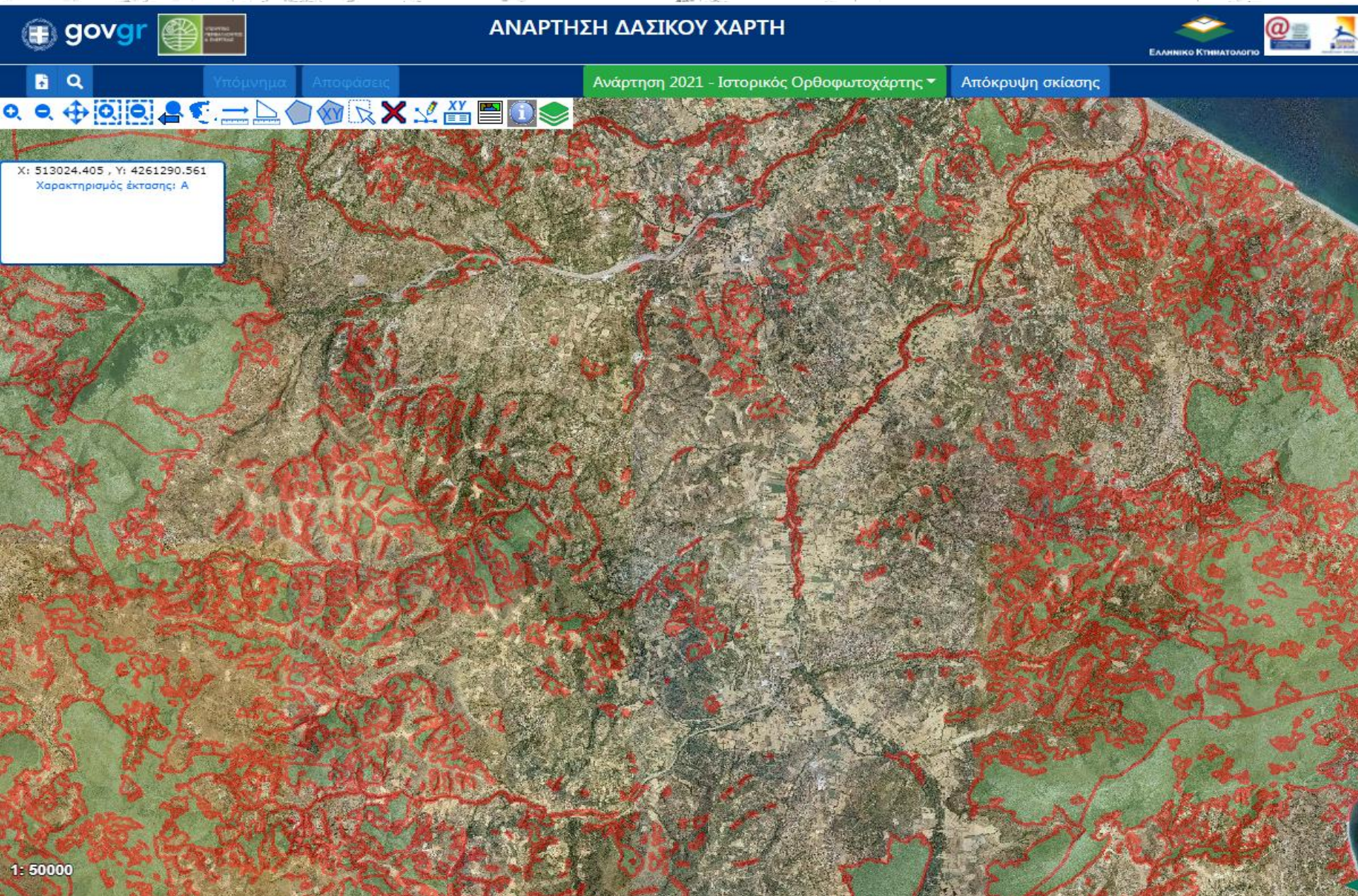
Globally, as of **5:19pm CEST, 31 March 2022**, there have been **485.243.022 confirmed cases** of COVID-19, including **6.137.553 deaths**, reported to WHO. As of **26 March 2022**, a total of **11.054.362.790 vaccine doses** have been

1. Geographical information in every day life : Some examples

49 earthquakes on this map

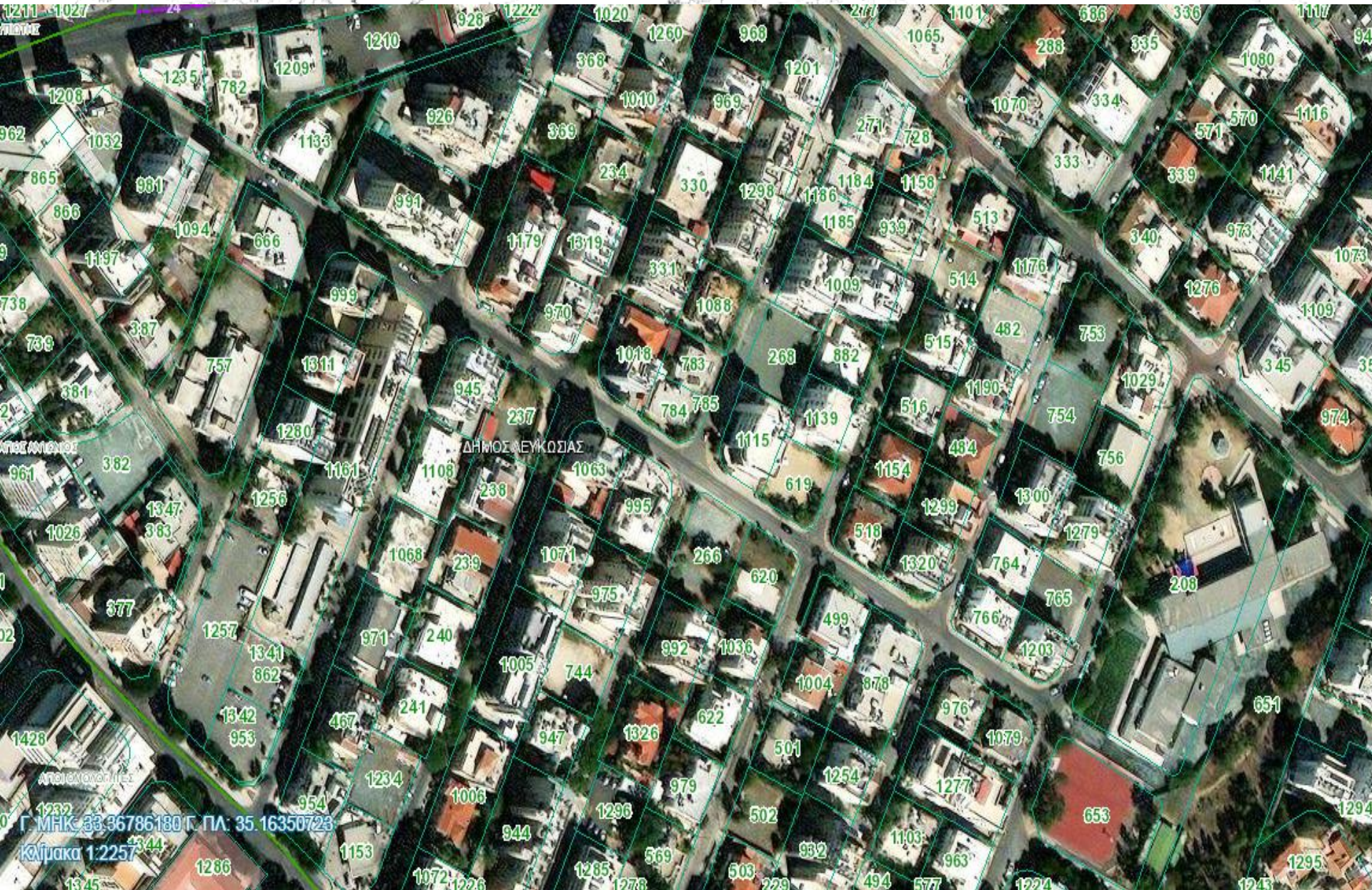


1. Geographical information in every day life : Some examples



Fiesole Retreat, Athens, April 5-7, 2022
National Library of Greece

1. Geographical information in every day life : Some examples



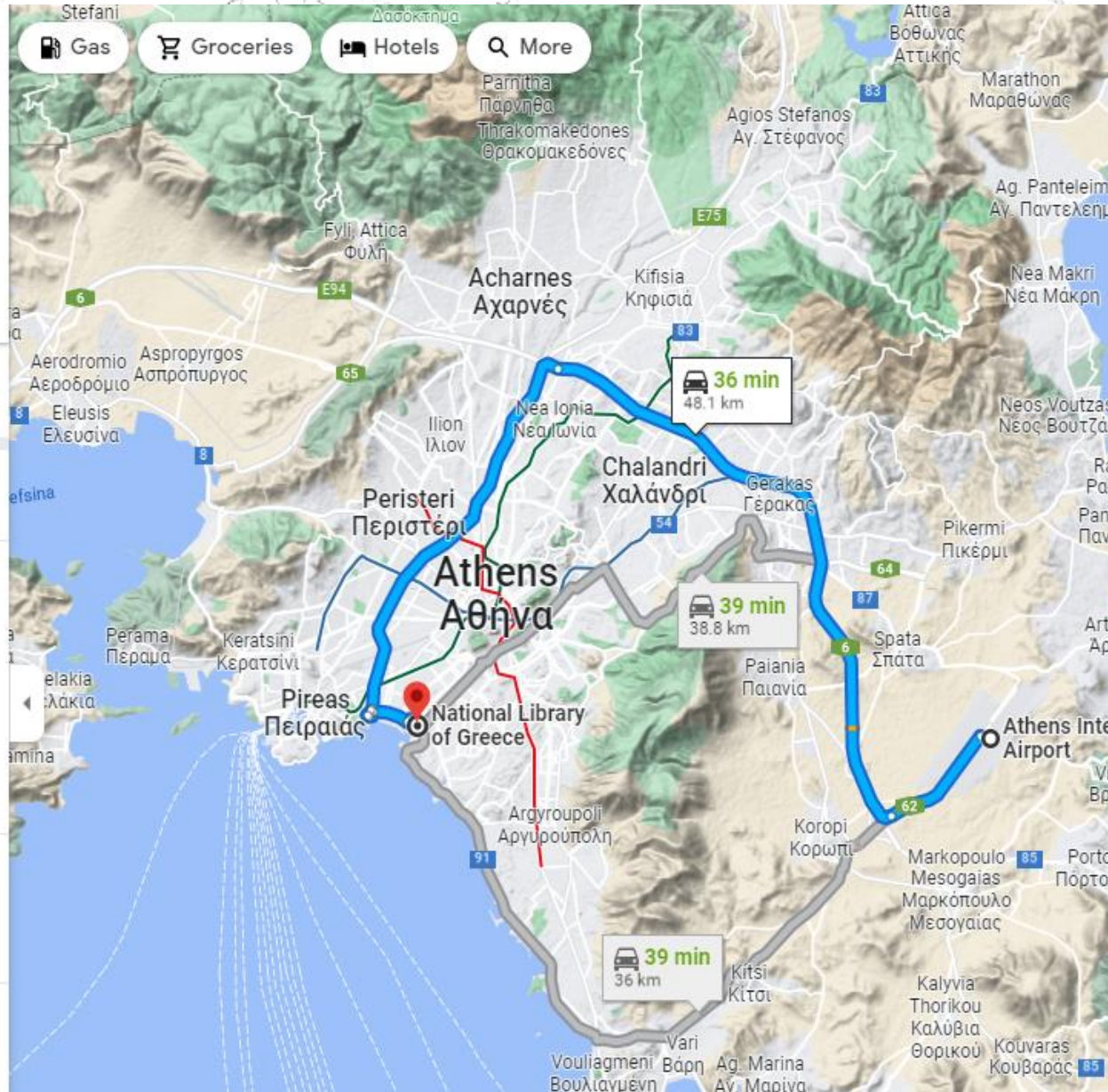
Fiesole Retreat, Athens, April 5-7, 2022

National Library of Greece

1. Geographical information in every day life : Some examples

A screenshot of a Google Maps navigation interface. At the top, there are icons for different modes of transport: car, bus, train, walking, bicycle, and airplane. Below these are two input fields: the first contains 'Athens airport' and the second contains 'National Library of Greece, Leof. Andrea...'. There is an 'Add destination' button and a 'Leave now' dropdown menu. A 'Send directions to your phone' button is also visible. The main part of the interface shows three route options:

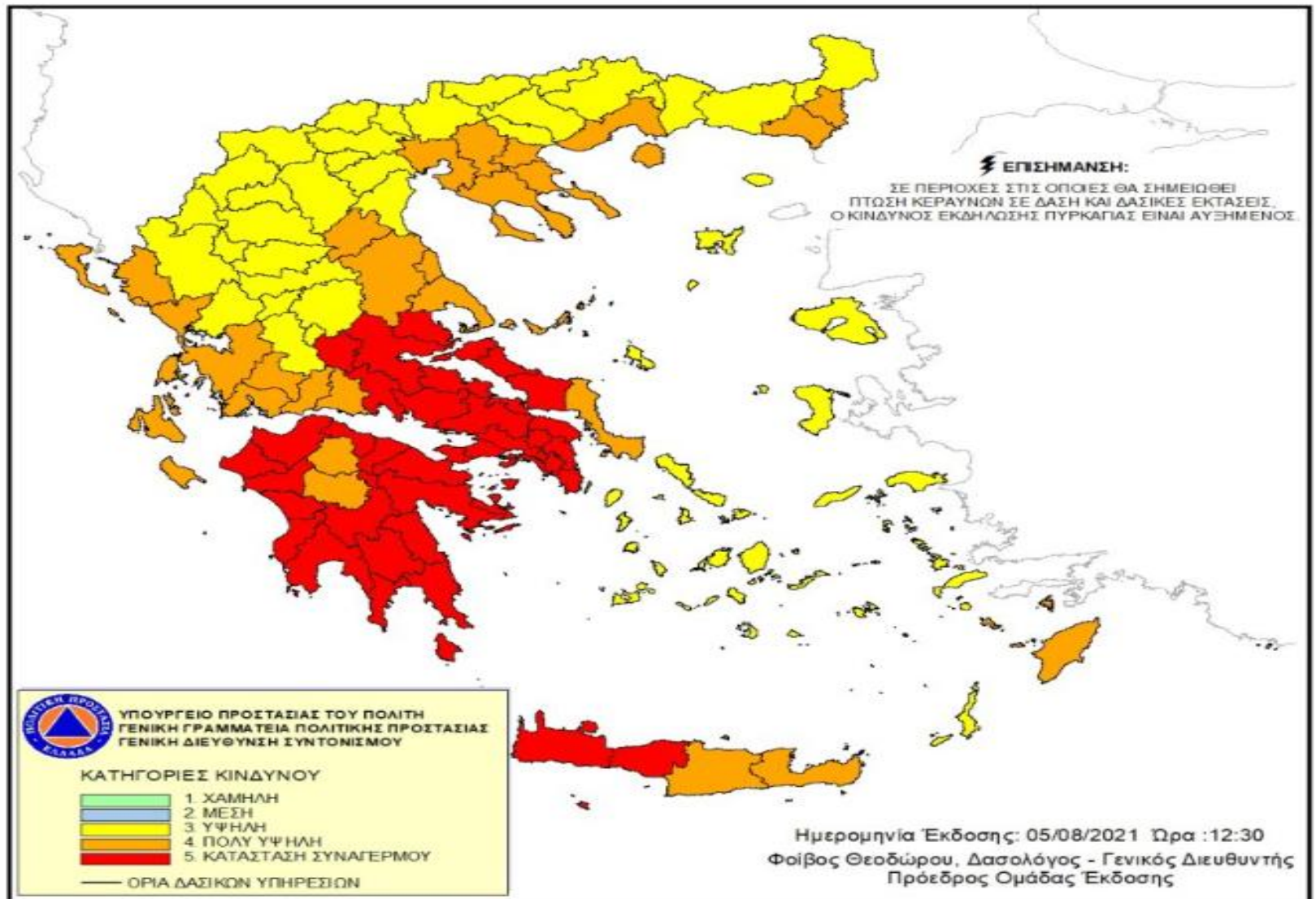
Route Description	Time	Distance
via Attiki Odos/A6/E94 and A/D Pireos Athinon Thessalonikis Evzonon/A1/E75 Fastest route, the usual traffic ⚠️ This route has tolls.	36 min	48.1 km
via Leof. Eyelpidon and Leof. Poseidonos	39 min	36.0 km
via Attiki Odos/A6/E94	39 min	38.8 km



Fiesole Retreat, Athens, April 5-7, 2022
National Library of Greece

1. Geographical information in every day life : Some examples

ΧΑΡΤΗΣ ΠΡΟΒΛΕΨΗΣ ΚΙΝΔΥΝΟΥ ΠΥΡΚΑΓΙΑΣ ΠΟΥ ΙΣΧΥΕΙ ΓΙΑ Παρασκευή 06/08/2021



Ημερήσιος Χάρτης Πρόβλεψης Κινδύνου Πυρκαγιάς 06/08/2021

Fiesole Retreat, Athens, April 5-7, 2022

National Library of Greece

1. Geographical information in every day life : Some examples

The image displays a web-based GIS interface. On the left, a map of New York State is shown with a red box highlighting the New York City area. On the right, a control panel is visible, featuring a search bar with the text "New York, NY", a date slider set to 1880, and a list of historical maps for Brooklyn, NY. The interface includes various icons for map interaction and data export options like JPEG, GeoTiff, KMZ, and GeoPDF.

Location	Map Name	Year	Scale
Brooklyn, NY	HTMC, 1889 ed.	1889	1:62500
Brooklyn, NY	HTMC, 1891 ed.	1891	1:62500
Brooklyn, NY	HTMC, 1959 ed.	1897	1:62500
Brooklyn, NY	HTMC, 1961 ed.	1897	1:62500
Brooklyn, NY	HTMC, 1966 ed.	1897	1:62500
Brooklyn, NY	HTMC, 1898 ed.	1898	1:62500

Fiesole Retreat, Athens, April 5-7, 2022
National Library of Greece

1. Geographical information in every day life : Some examples

Ukrainians attempting to push back Russians



Source: Institute for the Study of War (21:00 GMT, 31 March)



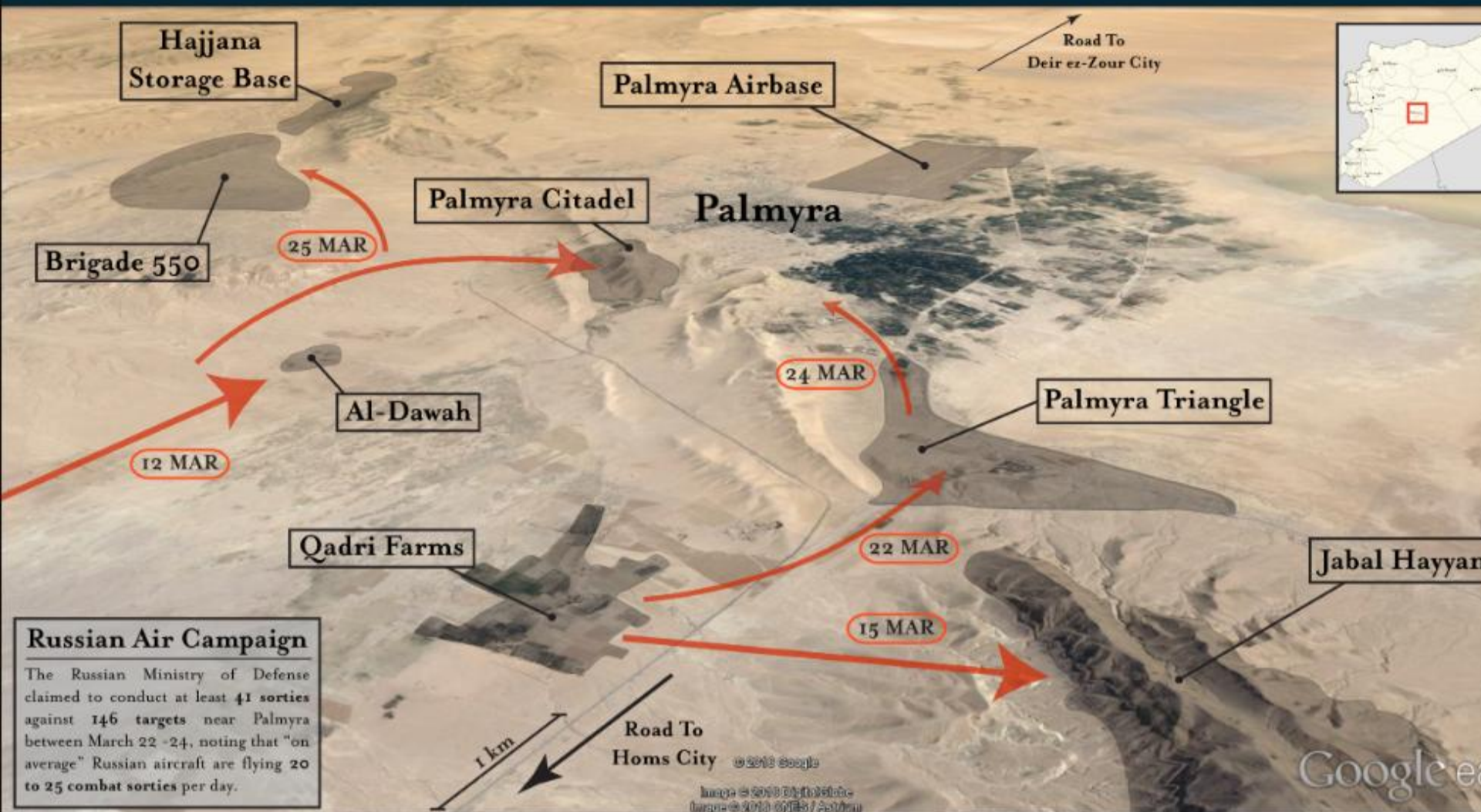
Fiesole Retreat, Athens, April 5-7, 2022

National Library of Greece

1. Geographical information in every day life : Some examples



The Battle for Palmyra: March 2016

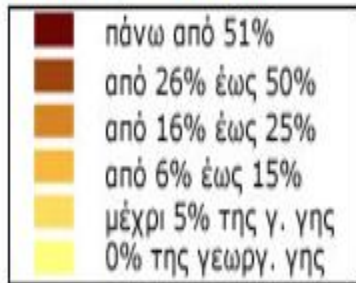


1. Geographical information in every day life : Some examples

ΥΠΟΥΡΓΕΙΟ ΑΓΡΟΤΙΚΗΣ ΑΝΑΠΤΥΞΗΣ & ΤΡΟΦΙΜΩΝ
ΔΙΕΥΘΥΝΣΗ ΑΓΡΟΤΙΚΗΣ ΠΟΛΙΤΙΚΗΣ & ΤΕΚΜΗΡΙΩΣΗΣ
ΤΜΗΜΑ ΤΕΚΜΗΡΙΩΣΗΣ

ΧΑΡΤΗΣ ΚΛΙΜΑΚΩΣΗΣ ΤΗΣ ΚΑΛΛΙΕΡΓΕΙΑΣ ΤΗΣ ΜΗΛΙΑΣ

Ο χάρτης απεικονίζει περιοχές, στις οποίες η καλλιέργεια της μηλιάς καλύπτει τα ακόλουθα ποσοστά γεωργικής γης:



Κτυπήστε με το ποντίκι το χάρτη,
για να τον δείτε μεγαλύτερο

ΠΗΓΗ: ΕΛ.ΣΤΑΤ. (2007)
Από την ετήσια στατιστική έρευνα 2007, ανά δημοτικό και κοινοτικό διαμέρισμα (Καλλικράτης 2007)

Συνολική γεωργική γη	37.000 χιλ. στρ.
Έκταση καλλιέργειας	132 χιλ. στρ.
Παραγωγή	251 χιλ. τόνοι
Ποσοστό κάλυψης γ. γης	0,4%



1. Geographical information in every day life : Some examples



ΥΠΟΥΡΓΕΙΟ ΚΛΙΜΑΤΙΚΗΣ ΚΡΙΣΗΣ
ΚΑΙ ΠΟΛΙΤΙΚΗΣ ΠΡΟΣΤΑΣΙΑΣ

Α Α +Α

Ελληνικά English

Επικοινωνία

Αναζήτηση...



Παρουσίαση Φορέα ▾ Οδηγίες Προστασίας ▾ Εθελοντισμός ▾ Διεθνής Συνεργασία ▾



ΚΕΝΤΡΙΚΗ ΣΕΛΙΔΑ / ΔΕΛΤΙΟ ΤΥΠΟΥ // ΑΝΑΒΑΘΜΙΣΗ ΤΟΥ 112 - ΜΕ ΑΠΟΛΥΤΗ ΑΚΡΙΒΕΙΑ ΠΛΕΟΝ Ο ΓΕΩΕΝΤΟΠΙΣΜΟΣ ΟΣΩΝ ΚΑΛΟΥΝ ΑΠΟ ΚΙΝΗΤΑ ANDROID ΣΕ ΟΛΗ ΤΗΝ ΕΛΛΑΔΑ

Αναβάθμιση του 112 - Με απόλυτη ακρίβεια πλέον ο γεωεντοπισμός όσων καλούν από κινητά Android σε όλη την Ελλάδα



Αθήνα, 05 Αυγούστου 2020

2. Map/GIS Libraries in western world (1/4)

After the World War II because of the:

- Increased production and use of cartographic materials in both the public & private sector (print & digital)
- advent of automated cartographic systems and telecommunication systems
- growth of spatial analysis and geographic information systems academic departments
- deposit programs that developed in 70s

Along with the

- adoption of information management techniques (accessibility and classification to geospatial information)
- interdisciplinary nature of geography
- establishment of information literacy programs

2. Map/GIS Libraries in western world (2/4)

Map/GIS Libraries' Associations

YEAR	ASSOCIATION NAME	COUNTRY
1941	Geography & Map Division (Special Library Association)	U.S.A.
1966	Map Curators Group (British Cartographic Society)	UK
1967	Western Association of Map Libraries	U.S.A.
1968	Association of Canadian Map Libraries and Archives	CANADA
1969	Geography and Map Section (IFLA)	INTERNATIONAL
1973	Australian Map Curators	AUSTRALIA
1977	New Zealand Map Society	NEW ZEALAND
1980	Map and Geography Round Table (MAGERT – ALA)	U.S.A.
1980	Groupe des Cartothecaires (GdC – LIBER)	EUROPE
1983	Australian Map Circle	AUSTRALIA
2009	Australian and New Zealand Map Society (ANZMapS)	AUSTRALIA
2011	Map and Geospatial Round Table (MAGIRT – ALA)	U.S.A.
2012	Map & Geoinformation Curators Group (MAGIC)	INTERNATIONAL

(Vardakosta, 2018)

2. Map/GIS Libraries in western world (3/4)

The role of the Map/GIS Library

- Evaluate user needs,
- Select,
- Organize and
- Make data (print and digital) ready for users

(Weimer, 2008)

2. Map/GIS Libraries in western world (4/4)

Support

Students, scholars, researchers, map experts, users with little/none Map/GIS knowledge

Provided Sources (Print & Digital)

Maps, atlases, charts, aerial photos, geospatial data, cartographic reference, topographic maps, geological maps, soil maps, land use maps, population maps, land cover maps, vegetation maps, pictorial items, data bases, journals, etc.

Provided Services

- Use and interpretation of the material (print & digital)
- Interlibrary loan
- Geospatial literacy classes
- Access to GIS software
- Reference services
- Instruction/Guidance
- Scanning, printing services
- Repository for geospatial data

Open architecture, interoperability, user-friendly interfaces, query facilities, et.c.

3. Greek Libraries and Geographical Information (1/5)

Libraries/Services

- 14.2% of academic libraries sustain geographical collections and GIS services
- 86.4% of the libraries lack of GIS services

(Liarou, 2015; Vardakosta & Kapidakis, 2012)

Librarians

- 54% unable to identify potential needs regarding geographic information at their institution
- 63% unable to manage a budget for geographical material
- 44.3% unaware of whether academic community produces geospatial data
- 78.1% librarians need additional skills so to be able to cope with a geo-library

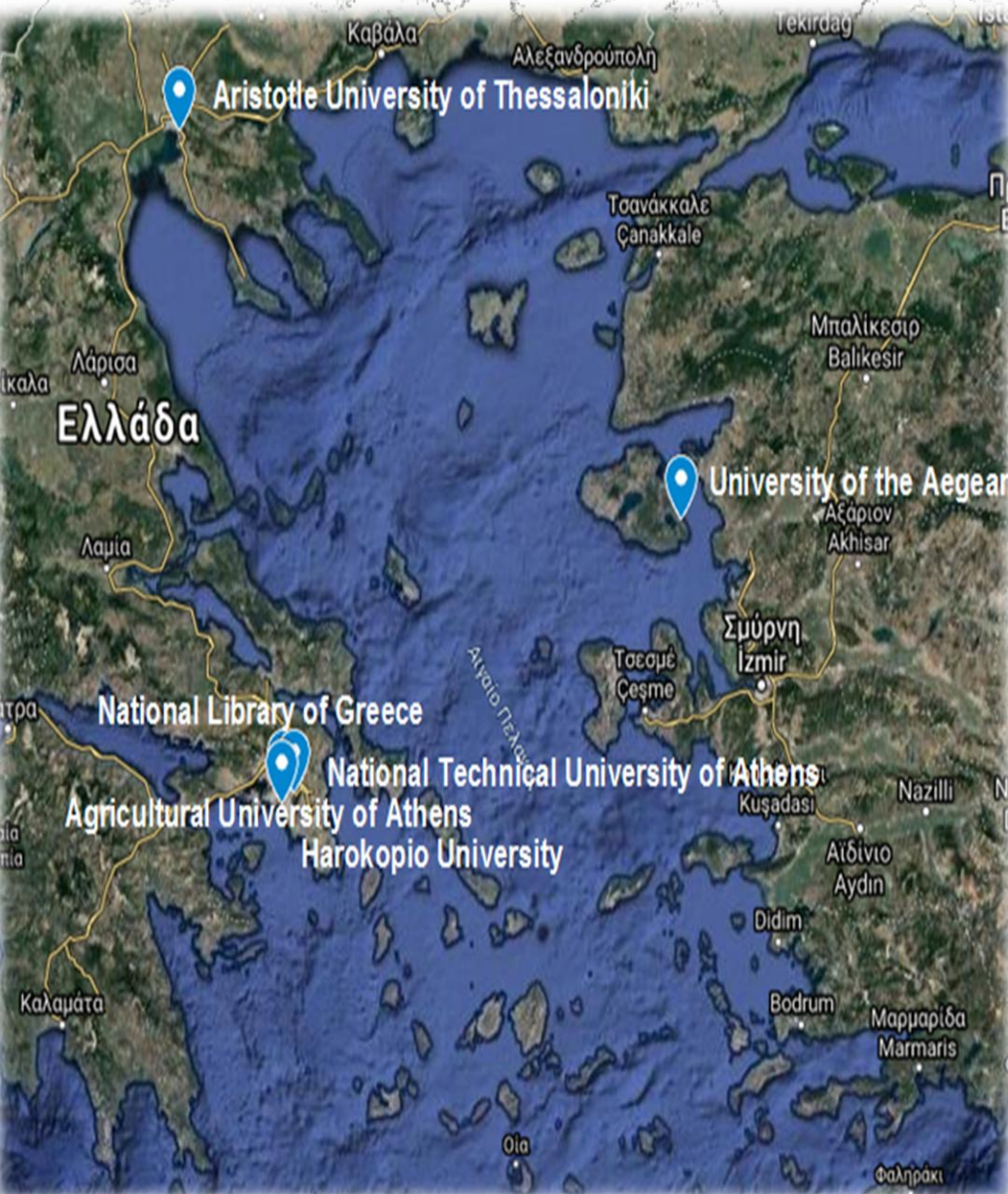
(Vardakosta et.al., 2016)

Users

- 46.7% consider the geospatial collections in Greece insufficient
- 82.2% choose the internet to cover their geo-digital needs
- 53.8% the use of Greek libraries do not fulfil their expectations
- 63.9% policies' development as a factor to improve geographical collections

(Vardakosta & Kapidakis, 2014)

3. Greek Libraries and Geographical Information (2/5)



Members of the
Greek Geographical
Libraries Group

Focus on

- Optimal management of the geographical material
- Value added services to the users

3. Greek Libraries and Geographical Information (3/3)

Goals to achieve

The application of common policies to the development of geographical collections

The utilization of geographical material that until recently may not have been managed (recorded, processed, and displayed)

Librarians' understanding of the importance of geographic information

The development of new applications and tools in order to expand and improve the provided services

Joint actions to access digital sources of geographical interest to reduce costs

The exchange of ideas between professionals in the field of geographical information

3. Greek Libraries and Geographical Information (4/5)

Geographical Academic Libraries Group



The first Group meeting

2017



Common Cataloguing Policies for Maps



Organization of a training seminar

2018



Guidelines for developing GDPs



Research among members

2019



2 Lectures



Users needs' Survey

2020



Social Media



HelpDesk (In Progress)

2021



Workshop organization in 27th Panhellenic Conference of Academic Libraries



Website (In Progress)


3. Greek Libraries and Geographical Information (5/5)

Challenges

- Lack of Economics
- Available Time

Future Plans

- Group's participation in funded programs
- Integrated geo-library
- Training efforts



Thank you!

Ifigenia Vardakosta
Ifigenia@hua.gr

REFERENCES

- Liarou, M. (2015). Adoption of GIS services in academic libraries. Master Thesis (unpublished). University of Macedonia In digital form, <https://dspace.lib.uom.gr/handle/2159/17046>
 - Longley, P.A., Goodchild, M.F., Maguire, D.J., & Rhind, D.W. (2021). *Geographical Information Science and Systems* (transl. in Greek A.Vrondeli & G.Stamou). Athens: Kleidarithmos Editions
 - Vardakosta, I. and Kapidakis, S. (2012). GIS services in Academic Libraries, in 7th Panhellenic Conference of HellasGIS, Athens, May 17-18
 - Vardakosta, I. and Kapidakis, S. (2012). *Policies for Geospatial Collections: a Research in US and Canadian Academic Libraries*. In 2nd Workshop on Digital Information Management, Corfu (GR), April 25-26.
 - Vardakosta, I. and Kapidakis, S. (2014). *Users perspectives for geospatial collections development in an open access era: The case of Greek libraries*. In British Cartographic Society-Map Curators Group Workshop, Birmingham (UK), 9-10 September.
 - Vardakosta, I., Aguilar-Moreno, E., Granell-Canut, C. and Kapidakis, S. (2016). *Geoskills among academic librarians in Greece, Cyprus and Spain*. *The Journal of Academic Librarianship*, 45 (2), 485-494.
 - Vardakosta, I. (2018). *Geospatial Collections Development Policies in an Open Access Environment* (PhD Thesis). Ionian University. Department of Archives, Library Science and Museology. Corfu.
 - Weimer, K. (2008). GIS and Digital Geospatial Data at TAMU Libraries-White Paper. <https://oaktrust.library.tamu.edu/bitstream/handle/1969.1/85748/GISWhitePaper2005rev.pdf?sequence=1>
- Visme Free Timeline Maker
 - All the images are either free of copyright or under legal use