



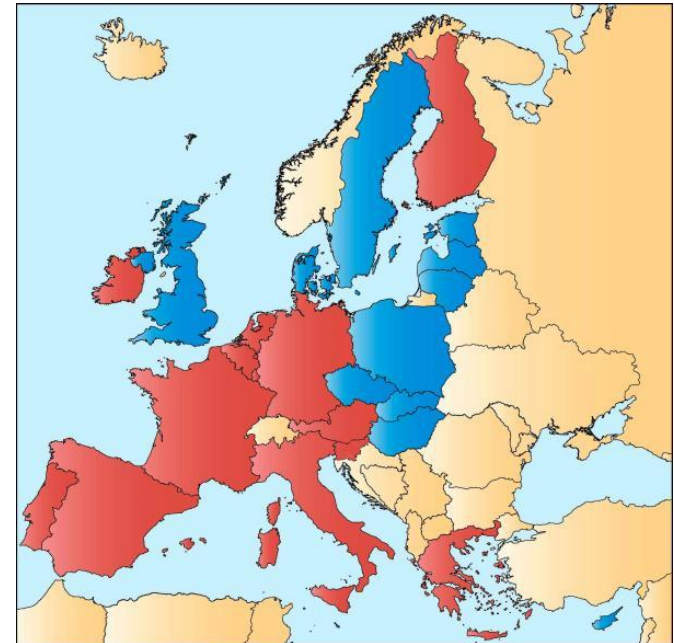
# Human Networks: International Library Associations Enabling Co-operation among Academic Libraries

Irma Pasanen  
TKK Helsinki University of Technology  
Library  
IFLA Science and Technology Libraries Section  
Chair 2005-2007



# Globalization

- International trade and foreign investments
- ICT development
- Cultural exchange
- Migration
- Standardization





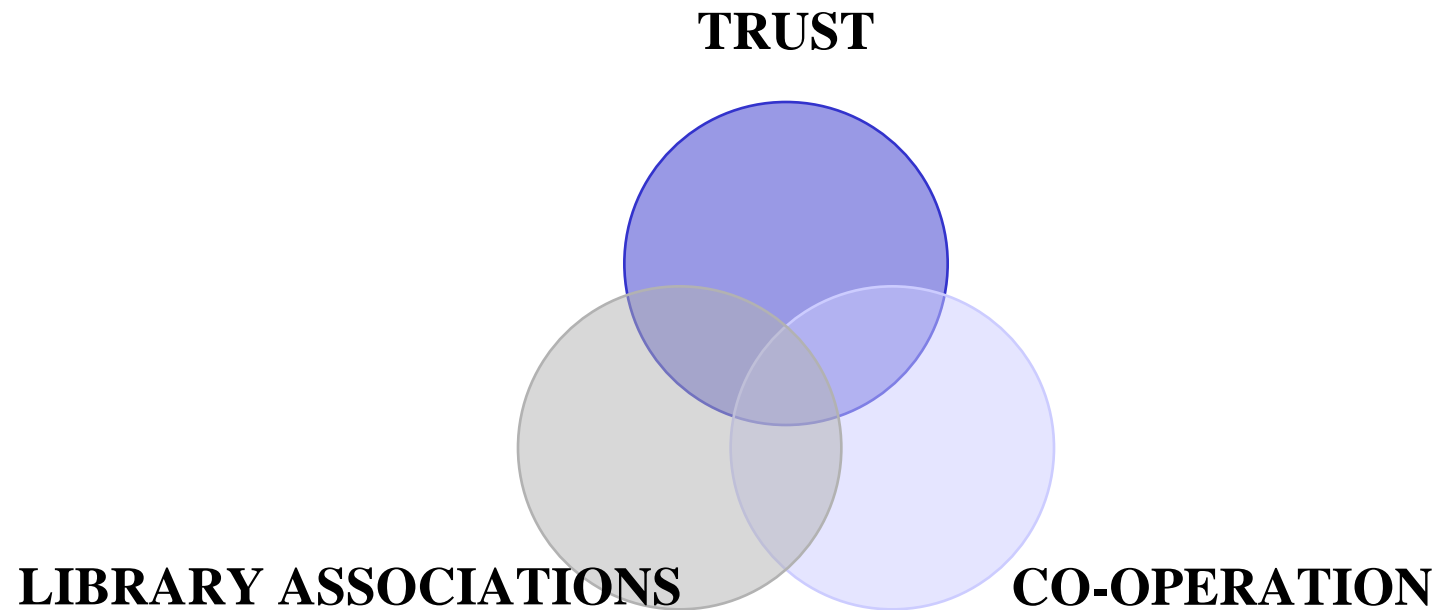
# Internationalization Higher Education

“The process of integrating an international, intercultural, or global extension into the purpose, functions or delivery of university education”

- response to the impacts of globalization
- integration via co-operation rather than competition



# Trust, Co-operation, and Libraries





# IFLA

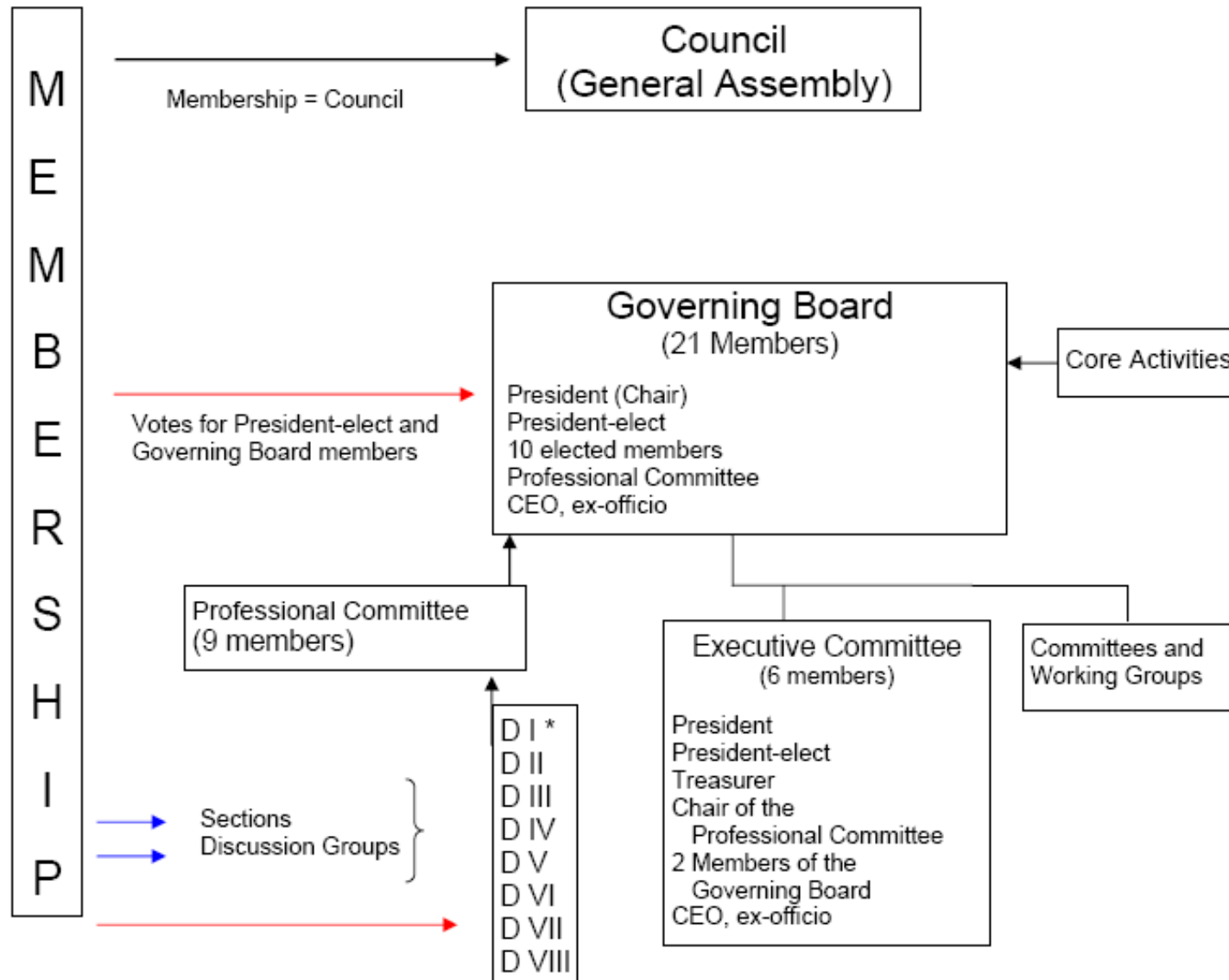
is an independent, international, non-governmental,  
not-for-profit organization

## Aims:

- Promote high standards of provision and delivery of library and information services
- Encourage widespread understanding of the value of good library & information services
- Represent the interests of our members throughout the world



# IFLA STRUCTURE



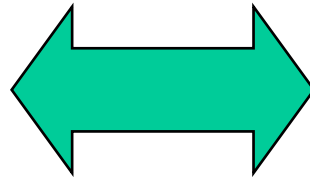
\* D = Divisions



# An institutional member of IFLA: what's in there for the institution?

## IFLA three pillars

1. Society
2. Profession
3. Members



## Four themes that pierce the action lines for the strategic development of Helsinki University of Technology

1. Internationalization
2. Interaction with the society
3. Digital environment
4. Quality and ability to reform

*IFLA: Over 1500 Members in  
150 countries around the world*

*Helsinki University of Technology,  
Finland. 15.000 students, 3000  
researchers*



# How to get involved?

## During an IFLA conference:

- Section Standing Committees: **observers** are welcome in SC meetings
- Presenting papers and/or posters
  - Call for papers usually at the end of the year
  - Check the IFLA conference website at [www.ifla.org](http://www.ifla.org)
- Brainstorming sessions, workshops etc.





# Work in a section

## Biannual Standing Committee elections

→ Get nominated and become a SC member

## Contribute in projects

→ Sections initiate projects, have publishing activities, work on guidelines etc.

## Plan programs

→ Conferences, satellite events, meetings



# IFLA standing committee membership

Personal benefits for an individual

- Insight to IFLA and its work
- A great international network of colleagues
- Management experience of international joint efforts

**Enthusiastic people are needed!**



# IFLA Annual Conference & Social events





See you in IFLA 2008!





# Challenges

Calendars  
Communication  
Commitment  
Culture



# Web 2.0 ?

- Wikis
- Blogs
- Face Book
- Second Life
- Etc.





# Strategic benefits for the institution

**Consolidated Information Literacy Programs for Harmonized Education?**  
Helsinki University of Technology Library: Irma Pasanen and Eva Tolonen  
Catholic University Leuven Arenberg Library: Ludo Holans and Linda Stoop

**New Study Structures**

In Europe, the Bologna process aims at the harmonization of the structure of higher education in order to facilitate mobility. Trans-national recognition of engineering degrees, academically and professionally, is a primary goal within the context of the engineering education. Value and educational recognition of the learning outcomes of study programmes between two or more institutions is expected to multiply the mobility of students across Europe.

The transferability of the information literacy programs in harmonized engineering education will depend on the new study structures of the universities. A case study is being conducted to examine the question of content and adaptation of such a program between the Helsinki University of Technology Library in Finland and the Campus Library Leuven of the Katholieke Universiteit Leuven, in Belgium.

**Master of Science in Technology at TKK**

Basic model (120 cr)  
New model including open level 1 modules (120 cr)

Electronic studies W3 20 cr	Master's thesis D 30 cr	Electronic studies W2 20 cr	Master's thesis D 30 cr
Level 1 module O 20 cr	Special module C 20 cr	Level 1 module E3, 20 cr	Level 2 module E2, 20 cr
Level 1 module M2 20 cr	Level 1 module M1 20 cr	Level 1 module E3, 20 cr	Level 1 module E3, 20 cr
General studies P 10 cr	Level 1 module M1 20 cr	Level 1 module E3, 20 cr	Level 1 module E3, 20 cr

**The Bachelor's Degree Programme (180 cr)**

Electronic studies W3 20 cr	Master's thesis D 30 cr	Electronic studies W2 20 cr	Master's thesis D 30 cr
Level 1 module O 20 cr	Special module C 20 cr	Level 1 module E3, 20 cr	Level 2 module E2, 20 cr
Level 1 module M2 20 cr	Level 1 module M1 20 cr	Level 1 module E3, 20 cr	Level 1 module E3, 20 cr
General studies P 10 cr	Level 1 module M1 20 cr	Level 1 module E3, 20 cr	Level 1 module E3, 20 cr

**Student interest during exchange**

Survey among 1000 respondents who studying both sides in exchange programs showed:

**"Virtual Erasmus can both include taking courses abroad while staying at the home university and vice-versa and/or complementing the existing Erasmus exchange programmes with virtual preparatory and follow-up activities"**

**REVE**

Research on the use of information literacy programs in harmonized engineering education

**Searching for Scientific Information**

**HELSINKI UNIVERSITY OF TECHNOLOGY**

## Case: Information Literacy Program Development



HELSINKI UNIVERSITY OF TECHNOLOGY





Thank you!

[irma.pasanen@tkk.fi](mailto:irma.pasanen@tkk.fi)