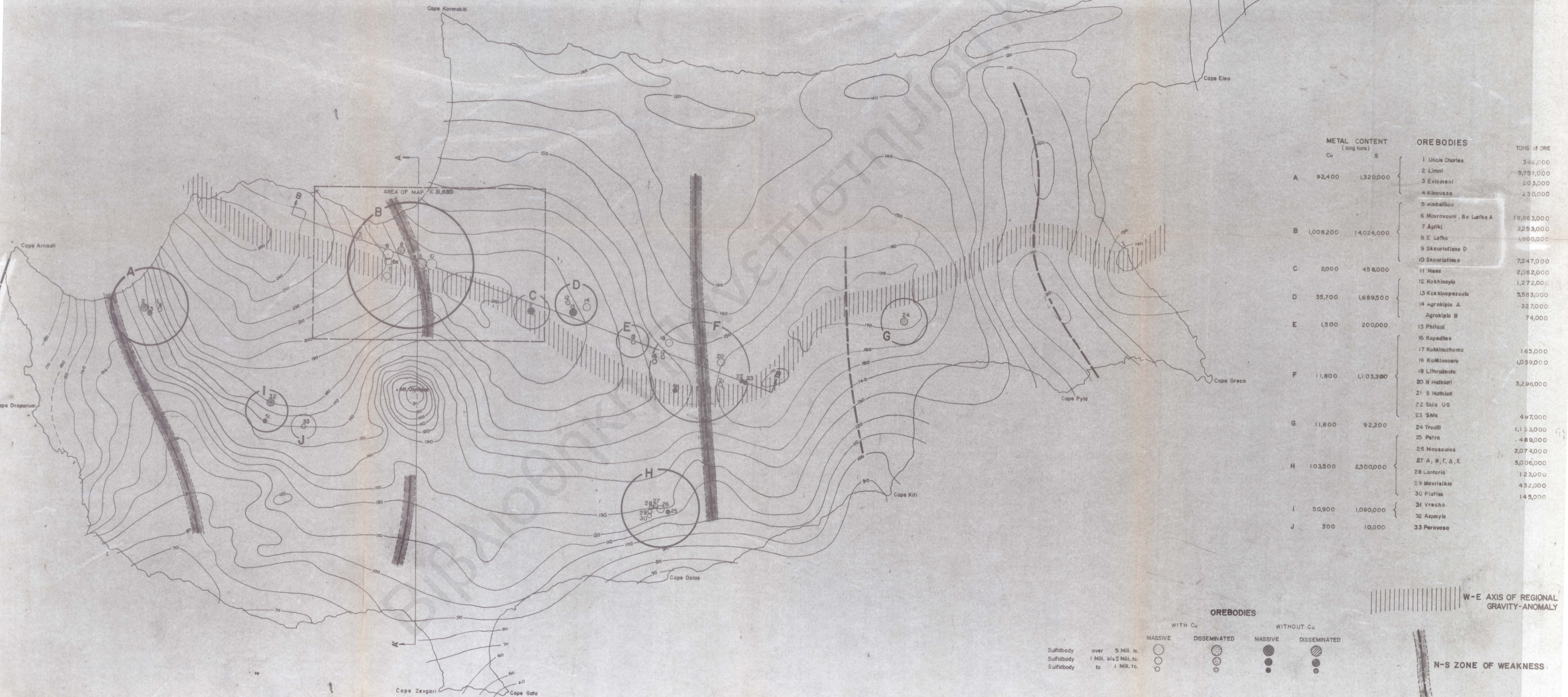
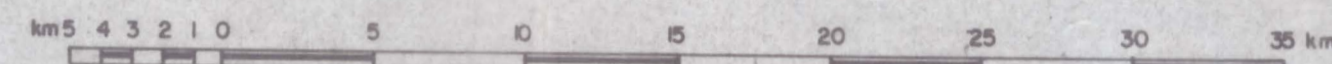


BOUGUER-ANOMALY MAP OF CYPRUS

SCALE 1:250,000

From: The Geology & Gravity Anomalies of the Troodos Massif, Cyprus. I.G. Gass and D. Masson-Smith, 1963. Bouguer isogals at 10 M'GAL intervals.



METAL CONTENT (long tons)		OREBODIES		TONS OF ORE
Cu	S			
A	92,400	1,320,000	1 Uncle Charles	542,000
			2 Limni	5751,000
			3 Evimeni	203,000
			4 Kinoussa	230,000
			5 Ambelikou	
B	1,008,200	14,024,000	6 Mavrovouni, 6a Lefka A	18,663,000
			7 Apliki	2,253,000
			8 E Lefka	1,800,000
			9 Skouriotissa D	
			10 Skouriotissa	7,247,000
C	2,000	458,000	11 Mami	2,082,000
			12 Kokkinoyia	1,272,000
			13 Kokkinopezoula	5,583,000
D	35,700	1,689,500	14 Agrokipsa A	327,000
			14 Agrokipsa B	74,000
E	1,500	200,000	15 Philiani	
			16 Kapedias	
			17 Kokkinochoma	165,000
			18 Kokkinonara	1,059,000
			19 Lithrodonta	
			20 N Nethiati	3,298,000
			21 S Nethiati	
			22 Sifa UG	
			23 Sifa	497,000
			24 Troulli	1,153,000
			25 Petra	489,000
			26 Mousoulos	2,074,000
			H	103,500
28 Lantaria	123,000			
I	50,900	1,090,000	29 Mavriakia	432,000
			30 Piaties	145,000
J	300	10,000	31 Vrecho	
			32 Aspyria	
			33 Peravasa	

OREBODIES

WITH Cu WITHOUT Cu

MASSIVE DISSEMINATED MASSIVE DISSEMINATED

Suffidbody over 5 Mill. to. MASSIVE (large solid circle) DISSEMINATED (large dotted circle)

Suffidbody 1 Mill. to 5 Mill. to. MASSIVE (small solid circle) DISSEMINATED (small dotted circle)

Suffidbody to 1 Mill. to. MASSIVE (tiny solid circle) DISSEMINATED (tiny dotted circle)

W-E AXIS OF REGIONAL GRAVITY-ANOMALY (hatched line)

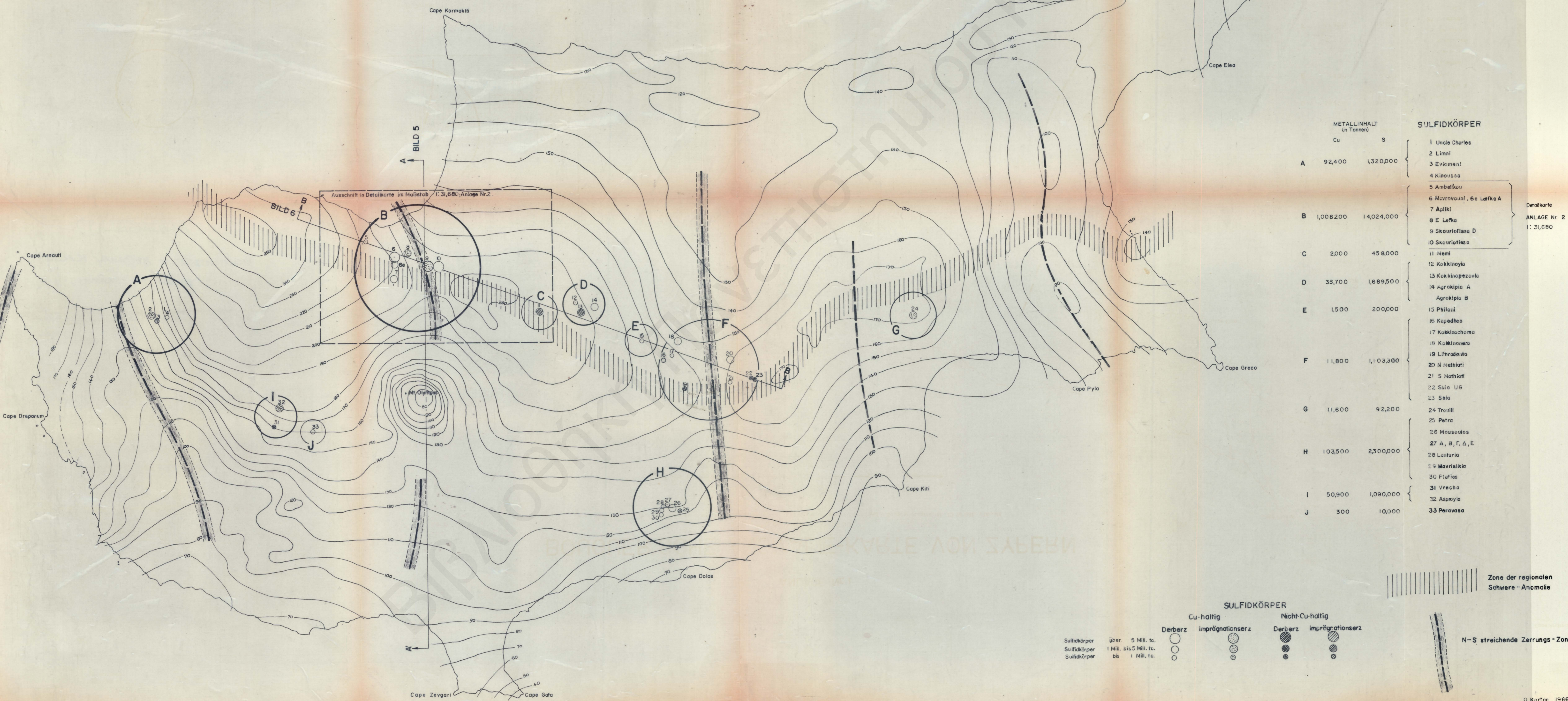
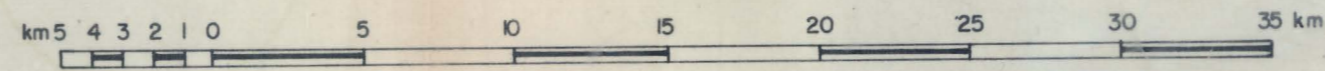
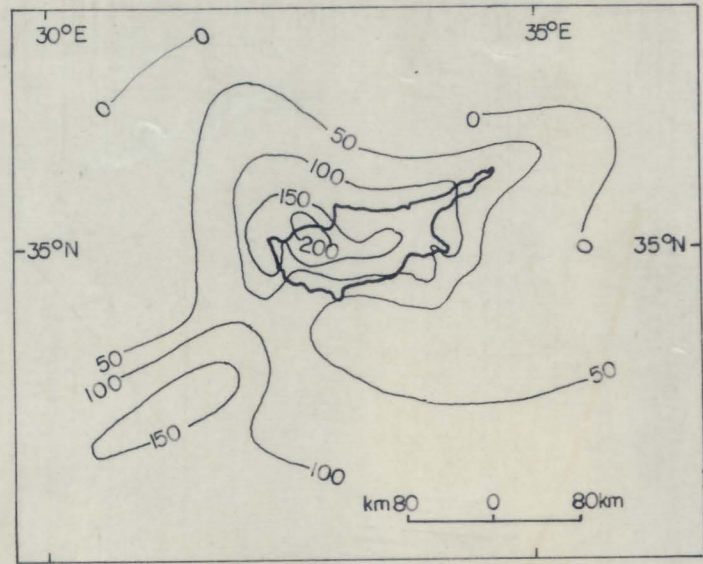
N-S ZONE OF WEAKNESS (thick hatched line)

ANLAGE Nr. 1

BOUGUER'SCHE ANOMALIE-KARTE VON ZYPERN

Maßstab 1:250.000

Von: The Geology & Gravity Anomalies of the Troodos Massif, Cyprus. I.G. Goss and D. Masson-Smith. 1963. Bouguer Isogals at 10 M'GAL intervals.



METALLINHALT (in Tonnen)
Cu S

	Cu	S
A	92,400	1,320,000
B	1,008,200	14,024,000
C	2,000	458,000
D	35,700	1,689,500
E	1,500	200,000
F	11,800	1,103,300
G	11,600	92,200
H	103,500	2,300,000
I	50,900	1,090,000
J	300	10,000

SULFIDKÖRPER

- 1 Uncle Charles
- 2 Limni
- 3 Evimeni
- 4 Kinoussa
- 5 Ambelikou
- 6 Mavrovouni, 6a Lefka A
- 7 Apliki
- 8 E Lefka
- 9 Skouriotissa D
- 10 Skouriotissa
- 11 Memi
- 12 Kokkinoyia
- 13 Kokkinopezoula
- 14 Agrokipia A
- 15 Philani
- 16 Kapedhes
- 17 Kokkinochoma
- 18 Kokkinouero
- 19 Lithrodento
- 20 N Mathiati
- 21 S Mathiati
- 22 Sida UG
- 23 Shia
- 24 Treilli
- 25 Petra
- 26 Mousoutos
- 27 A, B, Γ, Δ, E
- 28 Lantaria
- 29 Mavrisikia
- 30 Platies
- 31 Vrecha
- 32 Aspeyia
- 33 Peravosa

Detailkarte ANLAGE Nr. 2 1:31,680

Zone der regionalen Schwere-Anomalie

SULFIDKÖRPER

Cu-haltig Nicht-Cu-haltig

Derberz imprägnationserz Derberz imprägnationserz

Sulfidkörper über 5 Mill. to. Sulfidkörper über 5 Mill. to.

Sulfidkörper 1 Mill. bis 5 Mill. to. Sulfidkörper 1 Mill. bis 5 Mill. to.

Sulfidkörper bis 1 Mill. to. Sulfidkörper bis 1 Mill. to.

N-S streichende Zerrungs-Zonen

MORPHOU BUCHT

LEGENDE

	Alluvium Sande			
	Fanglomerate			
	Mergel, untergeordnete Sande und Konglomerate	} MYRTOU-SCHICHT	} MESORIA-ZONE	} PLIOZÄN
	Riffkalk			
	kreidige Mergel	} KORONIA-SCHICHT	} DHALI-ZONE	} MIOZÄN
	Gips			
	schwarzer Schieferstein und "Lumber"	} PERAPEDI-SCHICHT	} TRYFA-ZONE	} KREIDE
	VULKANISCHE GESTEINE			
	Pillow-Laven untergeordnet Pillow-freie Laven	} PILLOW-LAVEN	} TROODOS-PILLOW-LAVEN	} VULKANISCHER TROODOS-KOMPL.
	größere basaltische Gänge und Intrusivgänge			
	Pillow-arme Laven und Pillow-freie Laven	} PILLOW-ARME LAVEN	} "SHEETED" INTRUSIV-KOMPLEX	}
	Gänge, Intrusivgänge, untergeordnet Pillow-arme Laven			
	Diabas	} DIABAS	}	}
	PLUTONISCHE GESTEINE			
	Gabbro	} GRANOPHYR	}	}
	Granophyr			
	Gestein (eiserner Hut)			
	Formationsgrenze			
	abgeleitete Formationsgrenze			
	Formtion mit Übergang			
	Störung			
	abgeleitete Störung			
	SULFIDKÖRPER, Cu-HALTIG			
	MINERALISATION, Cu-HALTIG			
	MINERALISATION MIT PYRIT-IMPRAGNATION			
	GOLD, ALTE ABBAUE			
	STEINBRUCH			
	HALFTSTRASSEN			

AUSSCHNITT IN DETAILKARTE IM MAßSTAB 1:5000, ANLAGE 4
BLATT 2 BLATT 3

ANLAGE Nr. 2

<p>GEOL. MAP FROM THE 1:50,000 MEMPHIS 1:50,000 CYPRIUS SURVEY</p> <p>GEOL. MAP "MORPHOU AREA" SHEET OF 2</p> <p>GEOL. MAP "MORPHOU AREA" A 4129</p> <p>GEOL. MAP "MORPHOU AREA" A 4130</p>	<p>SCALE: 1:31,680</p> <p>DATE: 1961, 1968</p> <p>DRAWN BY: A.E.M., C.K.</p> <p>CHECKED BY: C.K., C.K.</p> <p>APPROVED BY: C.K.</p> <p>DATE: JAN 1969</p>
---	---

GEOLOGISCHE KARTE AMBELIKOU - MANDRES

MORPHOU BUCHT

ANLAGE Nr. 3

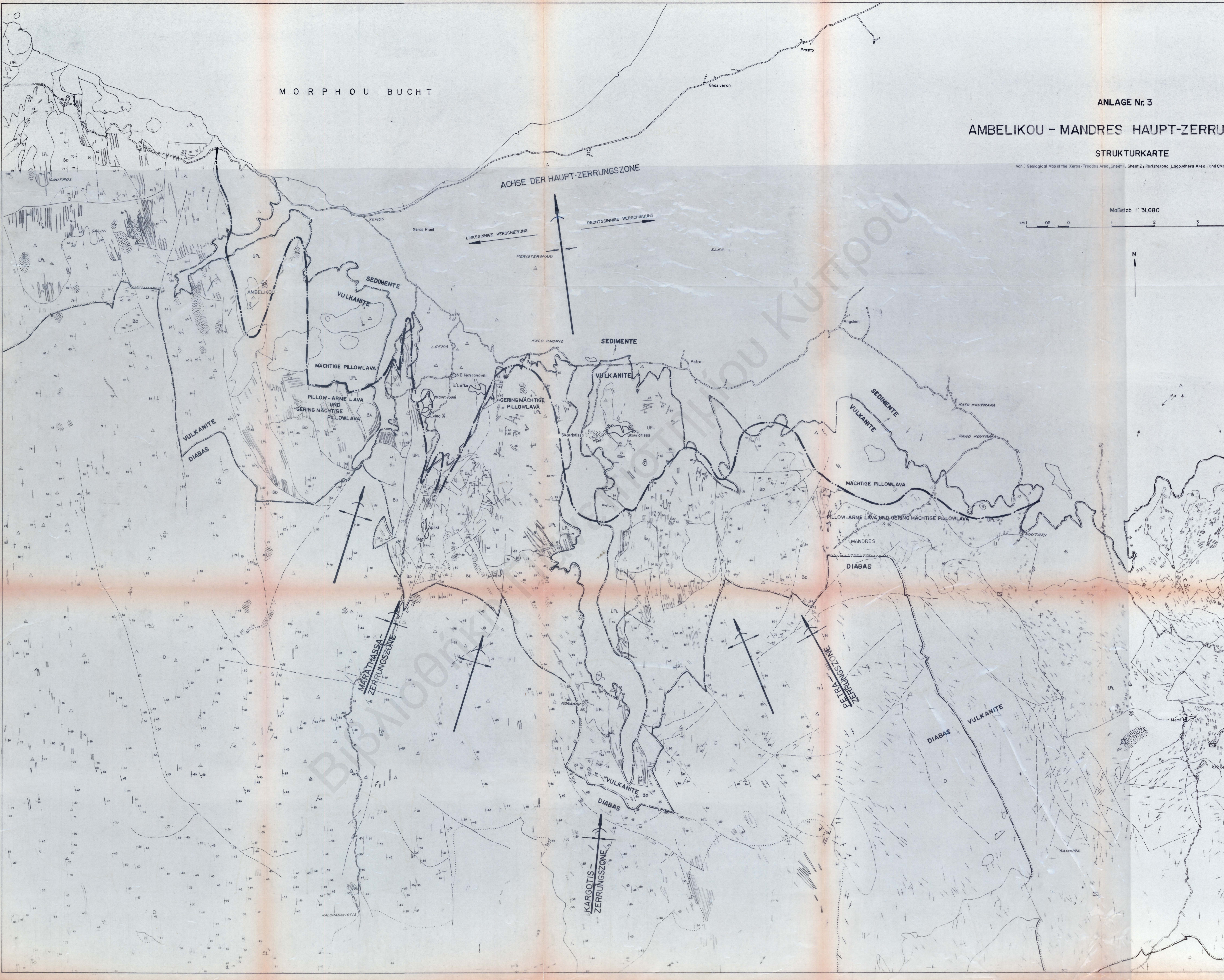
AMBELIKOU - MANDRES HAUPT-ZERRUNG

STRUKTURKARTE

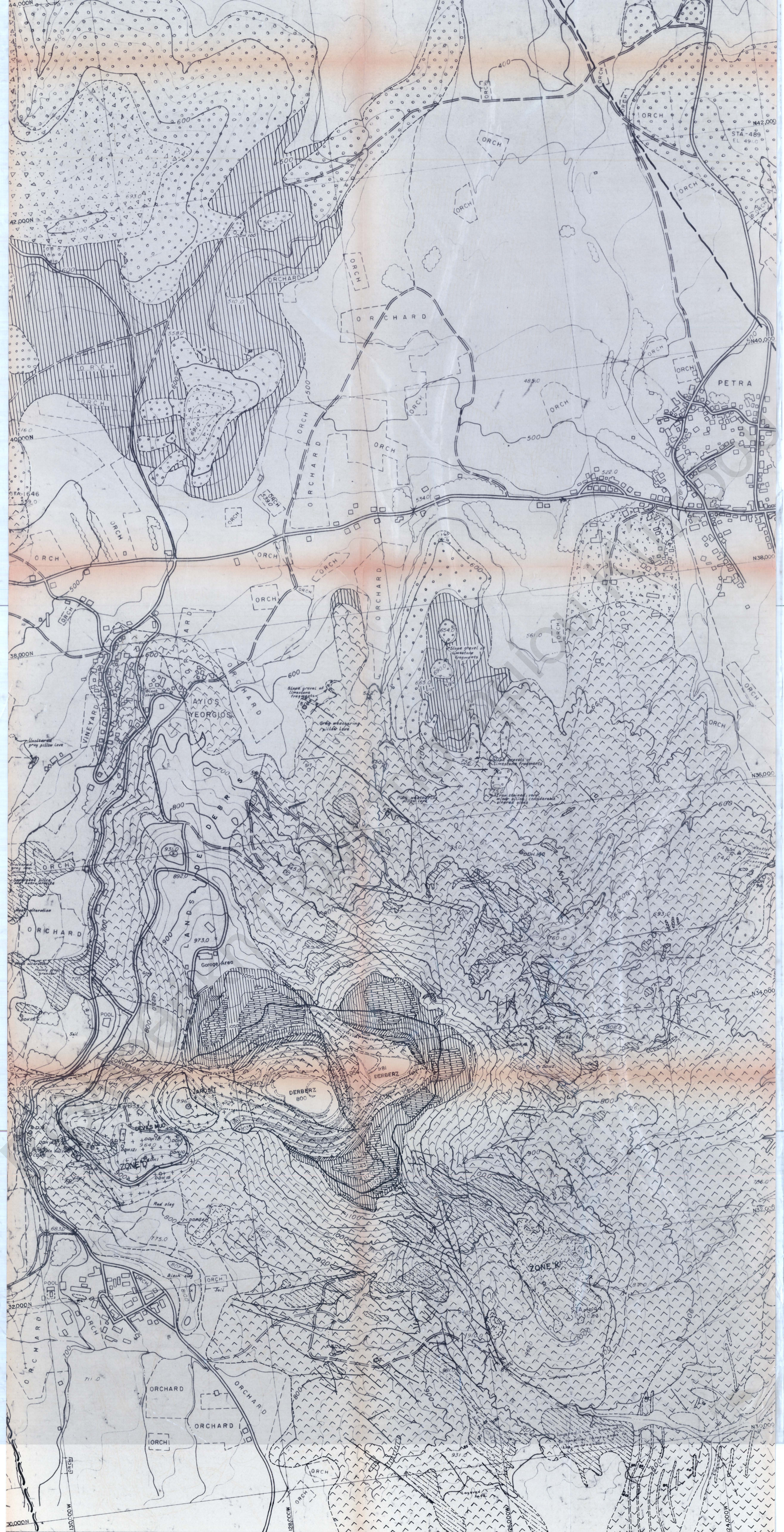
Von: Geological Map of the Xeros-Troodos Area, Sheet 1, Sheet 2, Peristerona, Logouthera Area, and CMC Upland

Maßstab 1: 31,680

km 1 0.5 0 1 2 3



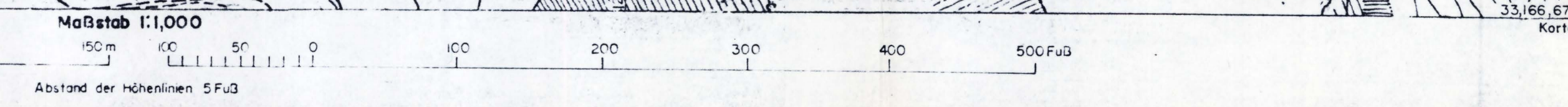


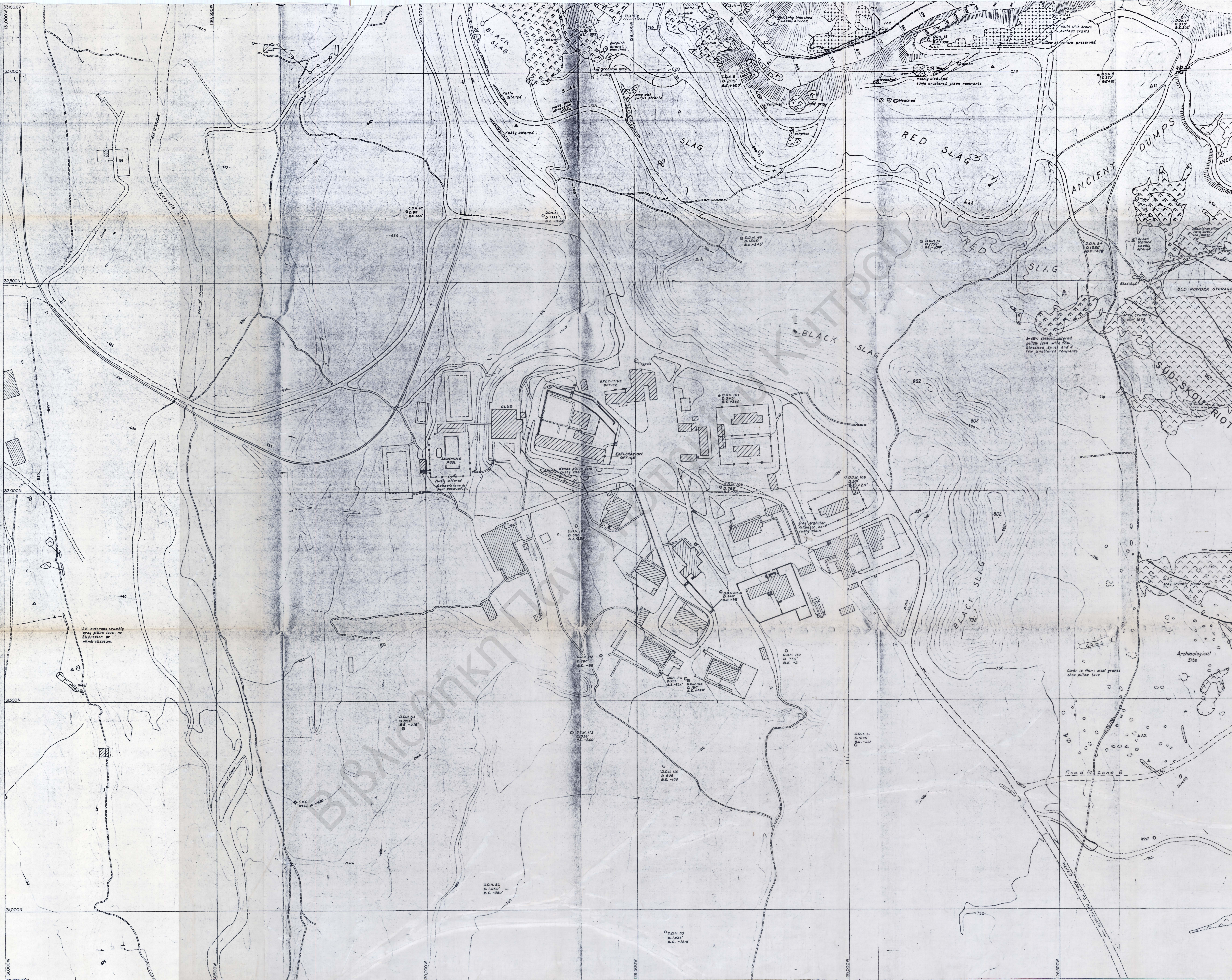


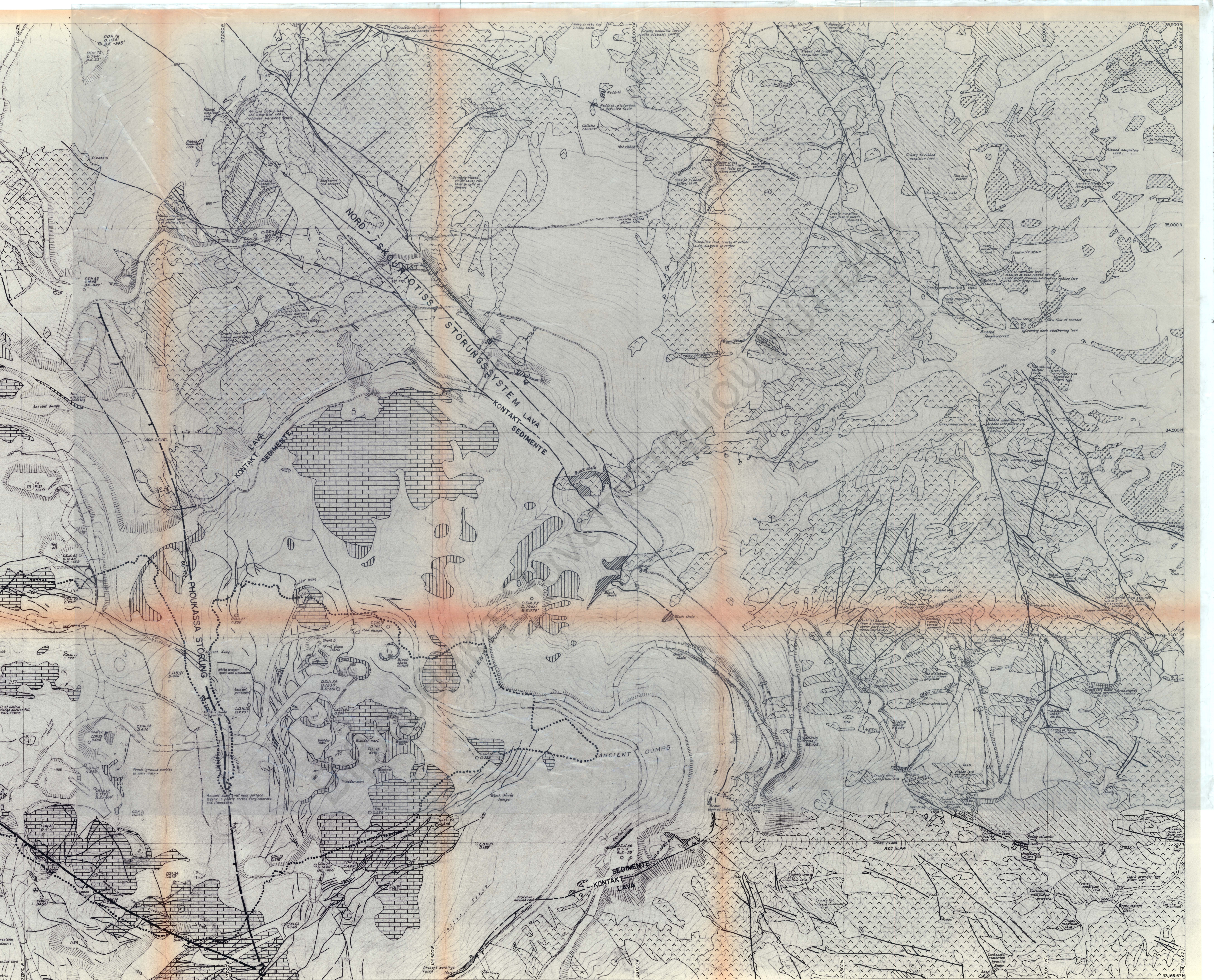




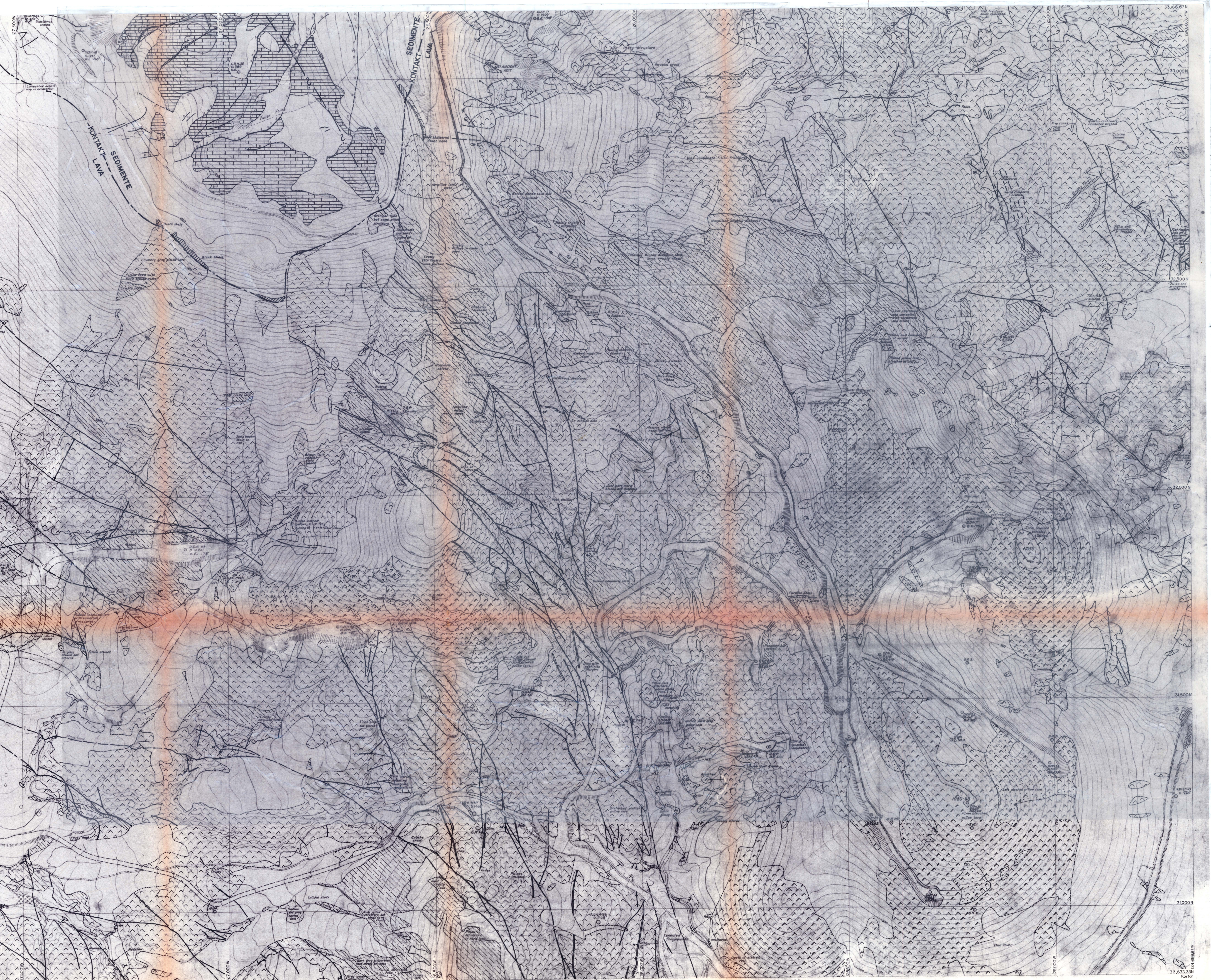
2	3
1	4





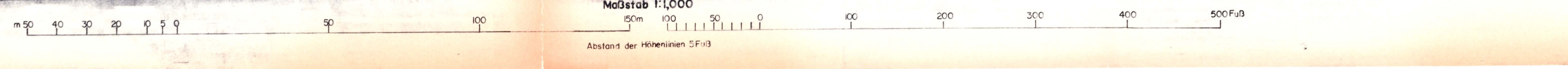


2	3
1	4



2	3
1	4

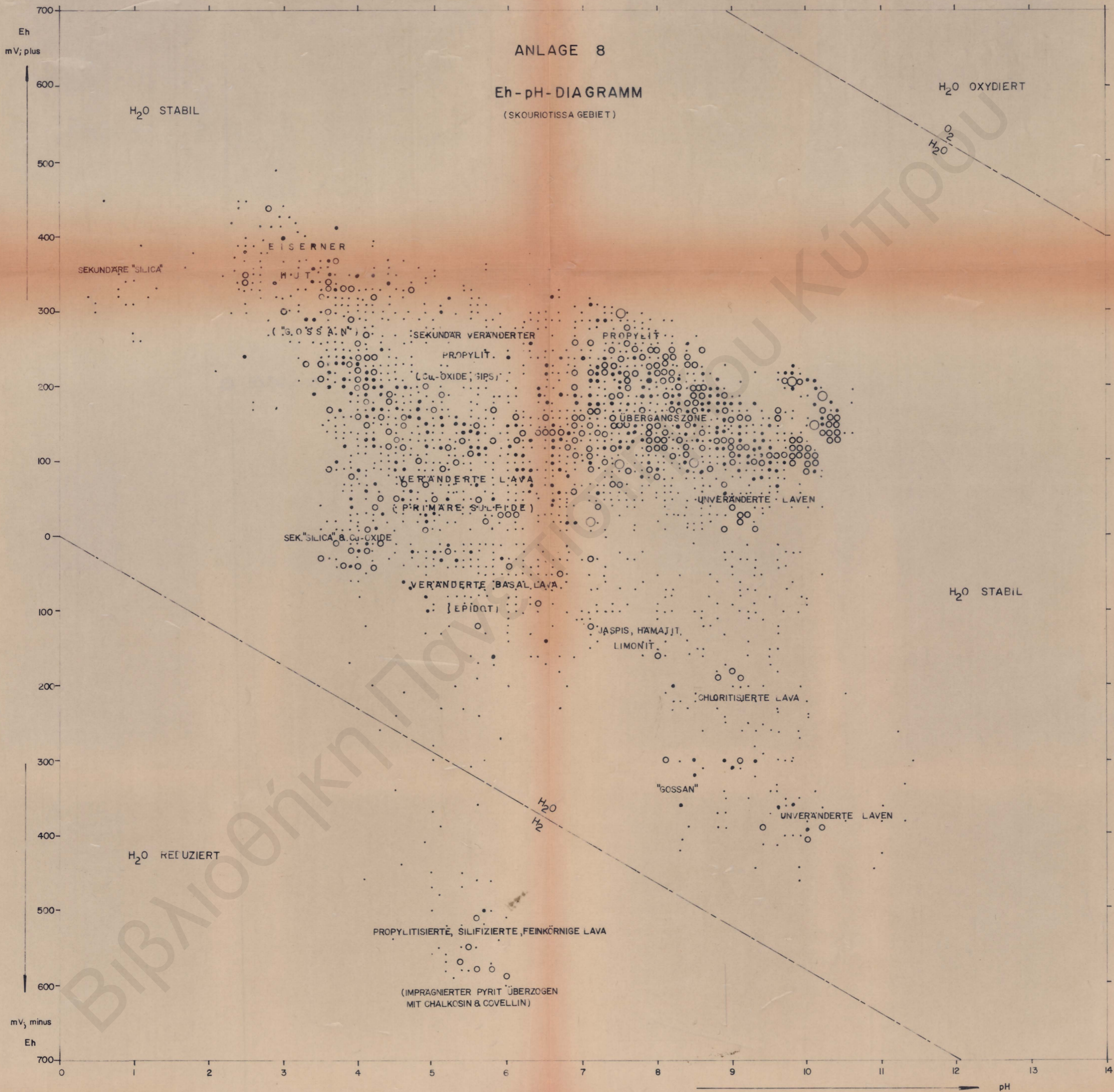
GEOLOGISCHE AUFNAHME MIT MESSTISCH, 1960-1962.
TOPOGRAPHISCHE GRUNDLAGE: HUNTING AEROSURVEY MAP, A-8041.



ANLAGE 8

Eh-pH-DIAGRAMM

(SKOURIOTISSA GEBIET)



○ 10 Proben

○ 5 Proben

• 2-3 Proben

• 1 Probe