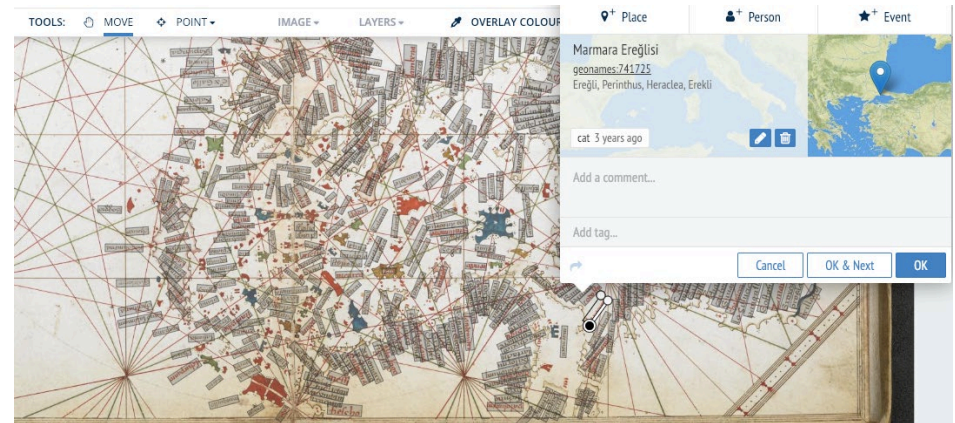
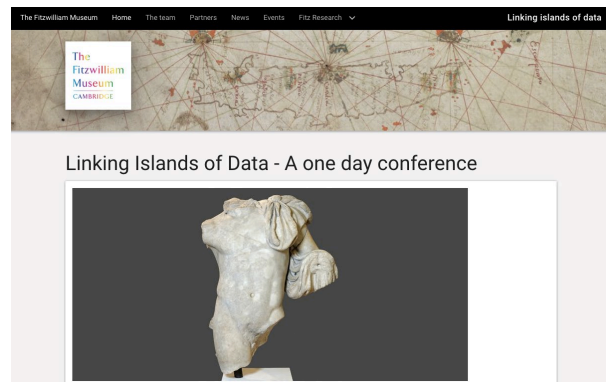


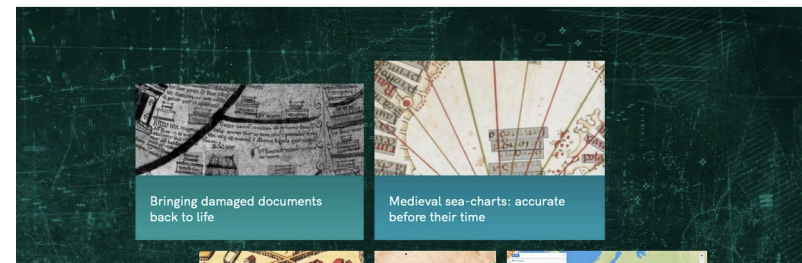
# FIESOLE RETREAT - APRIL 5-7, 2022, Tradition Meets Innovation



The Pelagios Network connects researchers, scientists and curators to link and explore the history of places.

[More about Pelagios](#) [Become a Partner](#)

- [Join the discussion](#)
- [Read our blog](#)
- [Discover Recognito](#)
- [Find us on Github](#)



Pelagios - Linked Open Data methods, tools and community | Eleni Gkadolou  
elenigadolou@gmail.com

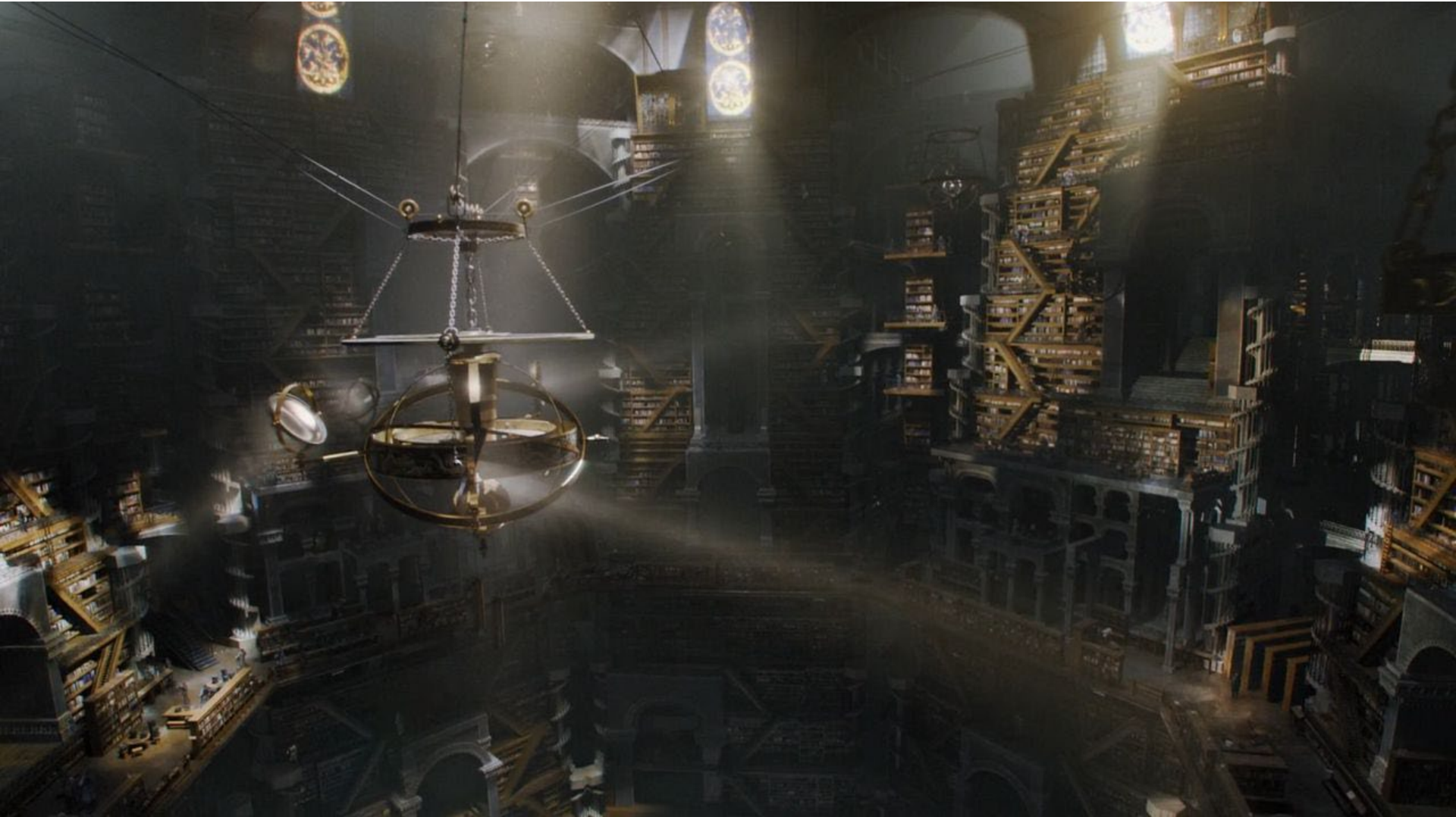


Harokopio University of Athens – Institute of Historical Research

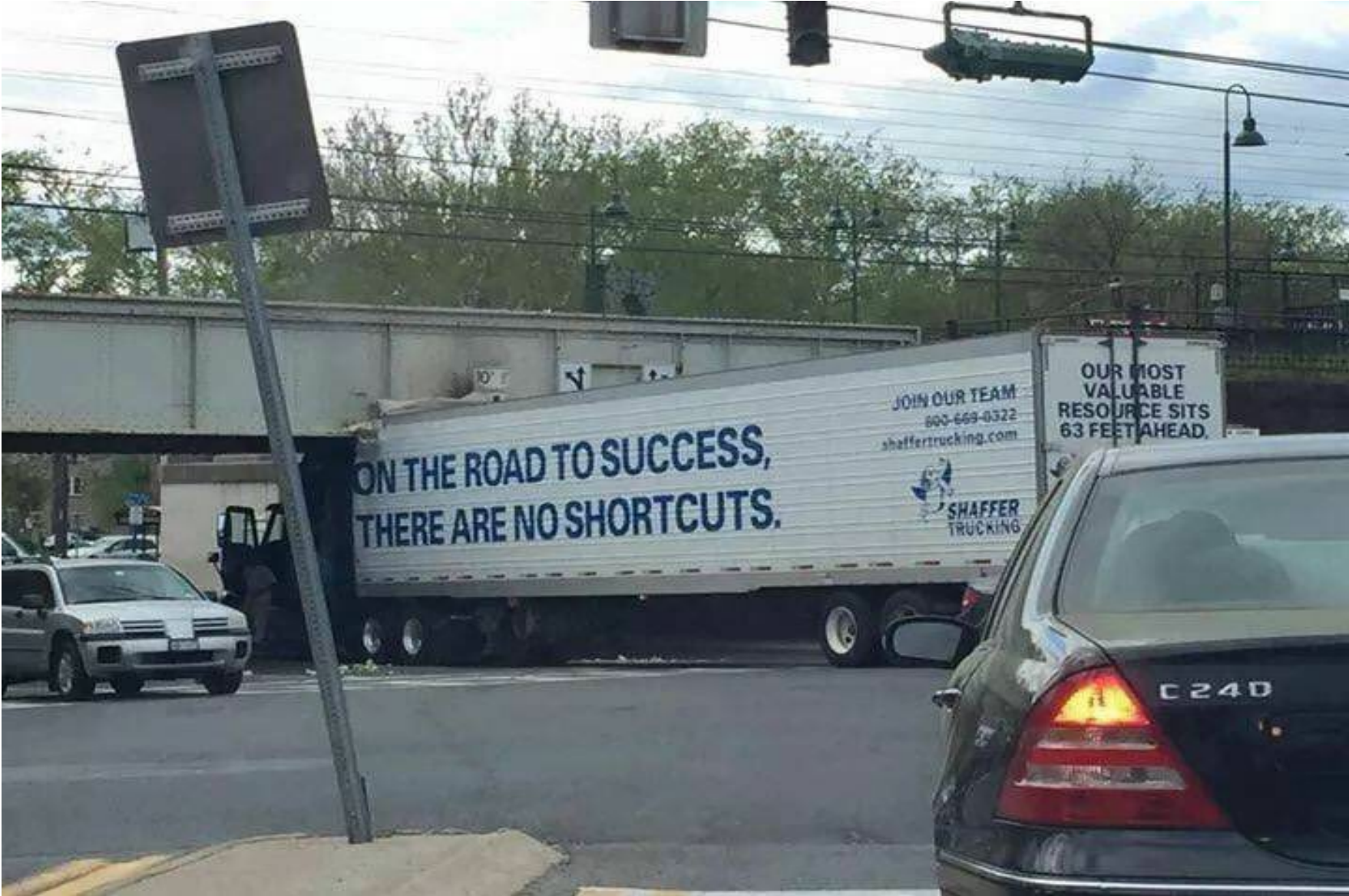




The digital challenge | (how) can you discover and access what you want?

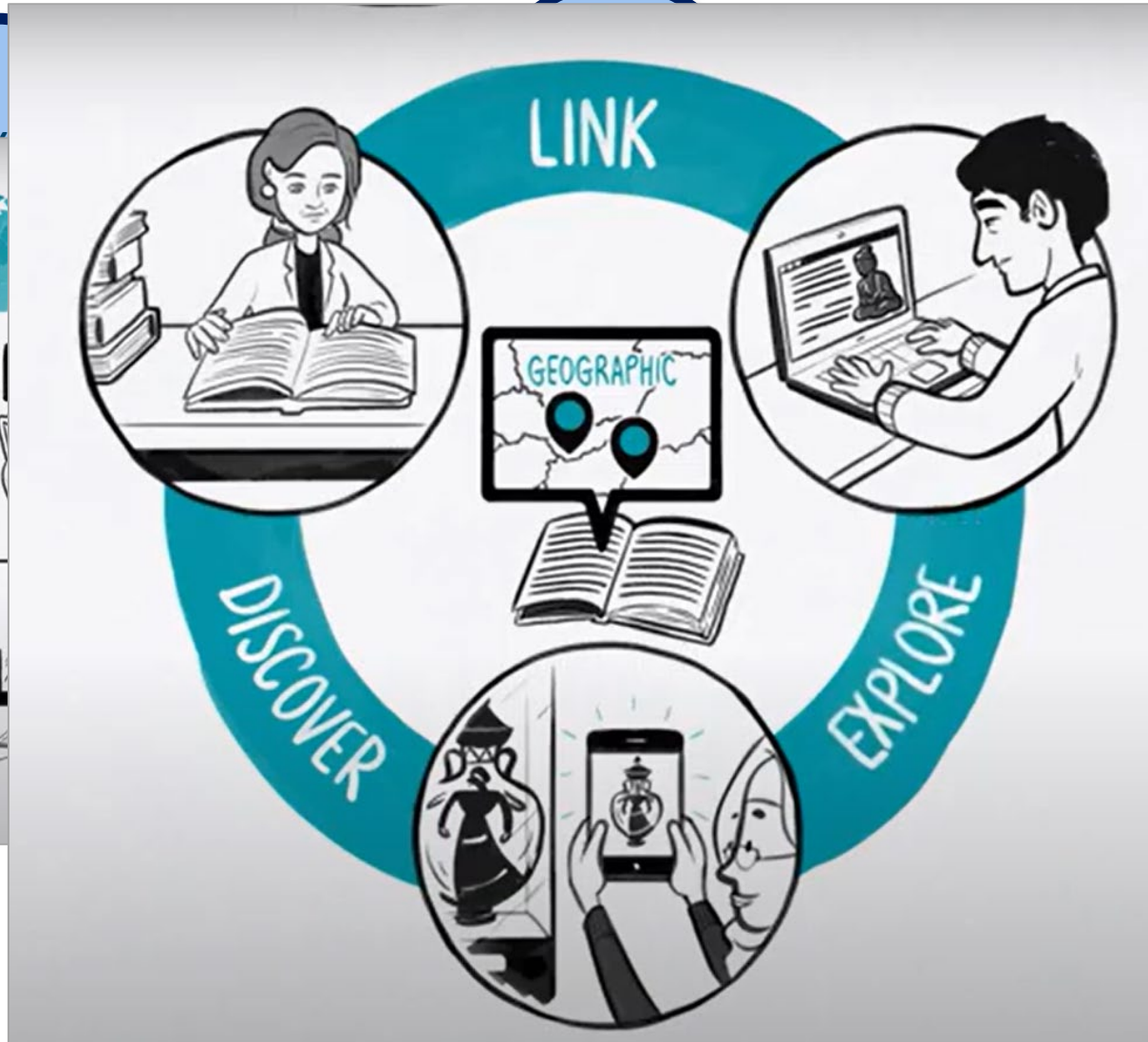


The digital challenge | and (how) can you (re)use it with yours?



Enter Pelagios | linking documents through the places they refer to

<https://pelagios.org/>



# 1. Method | Semantic annotation of place—co-production

Pausanias\_Book2.txt

46 Annotations · No Other Contributors

ANNOTATION MODE: NORMAL QUICK ▾ RELATIONS COLOUR: BY ENTITY TYPE BY VERIFICATION STATUS BY FIRST TAG

On the Greek mainland facing the Cyclades Islands and the Aegean Sea the Sunium promontory stands out from the Attic land. When you ha

```
<oa:Annotation
  rdf:about="https://recogito.pelagios.org/document/qpuwvla4hmhavo#e4e73ae0-677e-47c3-86e4-09b635b2da04">
  <oa:hasBody rdf:resource="http://pleiades.stoa.org/places/560353"/>
  <oa:hasTarget
    rdf:resource="https://recogito.pelagios.org/document/qpuwvla4hmhavo"/>
</oa:Annotation>
```

which he had invaded with an arm

The Peiraeus was a parish from e

the Athenians.[\*] Their port was

men say that Menestheus set sail with his fleet for Troy, and before him Theseus, when he went to give

Add a comment...

Add tag...

Cancel OK & Next OK






### 3. People | The Pelagios Network as a “community of practice”

The Pelagios Network connects researchers, scientists and curators to link and explore the history of places.


More about Pelagios

Become a Partner

 Join the discussion

 Read our blog

 Discover Recogito

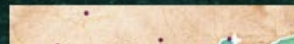
 Find us on Github



Bringing damaged documents  
back to life



Medieval sea-charts: accurate  
before their time



# Activities | Annotation-Collaboration-Gazetteers-Pedagogy-Registry-Visualisation



## Annotation

Supports the use of semantic annotation to link and explore historical place information



## Collaboration

Provides a forum for all Project Partners to share resources and collaborate



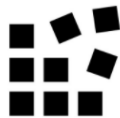
## Gazetteers

Establishes core requirements for global authority files on historic places and their alignment



## Pedagogy

Supports the use of linked data in education and cultural heritage



## Registry

Establishes services for registering and discovering linked data collections for places



## Visualisation

Supports the development of tools and methods for visualising geospatial information

# Partner | Historical Gazetteer of geographical entities



ΧΑΡΟΚΟΠΕΙΟ ΠΑΝΕΠΙΣΤΗΜΙΟ  
HAROKOPIO UNIVERSITY



ΕΘΝΙΚΟ ΙΔΡΥΜΑ ΕΡΕΥΝΩΝ  
National Hellenic Research Foundation

662234

**EXPÉDITION  
SCIENTIFIQUE  
DE MORÉE.**

SECTION DES SCIENCES PHYSIQUES.

TOME II. — 1.<sup>re</sup> PARTIE.

**GÉOGRAPHIE.**

PAR  
M. le Colonel BORY DE SAINT-VINCENT.

PARIS,  
Chez F. G. Levrault, Imprimeur-Éditeur, rue de la Harpe, n.° 11.

NOMS ET DÉSIGNATION DES POINTS OBSERVÉS.	EN GRADES		EN Lignes
	Latitude.	Longitude.	
Argos (angle nord-ouest de Larise, citadelle d').	41. 51. 0	22. 54. 16	38
Argro-Kastro, château ruiné vénitien? .....	41. 50. 50	22. 54. 16	40
Arkadia (sommet de la tour culminante de la citadelle d').	41. 58. 54	21. 49. 59	14
Armyros (grande maison blanche de Kaplianiaki) Migne occidentale .....	41. 10. 17	22. 02. 20	59
Araia (sommet de la montagne d'), chaîne de l'Araia .....	41. 18. 16	22. 09. 35	58
Astros (tour isolée à l'est d'), le sol .....	41. 57. 5	22. 02. 16	25
Athènes, le fronton du Parthénon .....	41. 18. 55	22. 56. 8	5
Atakolo (maison culminante du village d'), les ruines de <i>Castro</i> jusqu'à 1000 mètr. à l'est .....	41. 59. 24	21. 57. 57	51
Barbas (sommet du mont), Achée .....	41. 56. 5	21. 58. 5	9
Basse (temple d'Apollon Epikourion), le sol .....	41. 58. 5	21. 59. 1	23
Béacou (point culminant des montagnes au sud-ouest d'), le sol .....	41. 05. 4	21. 46. 58	5
Berkia (sommet du mont), Laconie .....	41. 18. 5	22. 05. 57	2
Béséré (sommet culminant au nord-ouest de), le sol .....	42. 01. 02	21. 25. 5	57
Bissa (point culminant de la montagne au sud du village de), isthme de Corinthe .....	42. 22. 0	22. 05. 0	57

HEXANDRIA. 97

36 **ALLIUM ALBUM** Santi Viag. 352, t. 7. — Scapo trigono nudo: Folis planis latis elongatis acutissimis: Spatha ampla simplex bifidave lobis acuminatis pedunculo brevioris petalis ovatis obtusiusculis staminibus simplicibus duplo superantibus. *fl.* — *A. lacteum* Sibth. Gr. t. 325.

**Fl. blanches, P.** Les environs de Modon, et généralement dans les sites analogues de toute la Morée.

Desc. *A. rosei* valde affine quamvis diversa specie scapo trigono nec tereti, foliis latoribus, petalis albis etc.

\**Staminibus alternatim tricuspидatis.*

37 **ALLIUM MARGARITACEUM** Sibth. *fl.* gr. t. 315. — Ultra pedale: Caule trifoliato: Folis fistulosis canaliculatis: Spatha brevissima multifida demum reflexa: Floribus parvis numerosissimis umbellato capitatis: Petalis ovato-oblongis acutiusculis: Staminibus tricuspидatis exsertis: Capsula ovata obtuse triangulari. *fl.*

# Partner | Historical Gazetteer of geographical entities



<https://moree1829.gr/>

- Αιολιότητα
- Κόλποι
- Νησιά
- Λοιπά
- ΟΙΚΩΜΕΝΟΣ ΧΩΡΟΣ**
- Πριτεύουσα νομού
- Πριτεύουσα επαρχίας
- Πριτεύουσα κοινότητας
- Χωριό
- Συνακισμός
- Διάσπαρτα σπίτια
- Πυργόσπιτα
- Καλύβια
- Μοναστήρια
- Μετόχια
- Εκκλησίες
- Κρήνες
- Νερόμυλοι
- Δεξαμενές
- Υδραγωγεία
- Γαλλική Φρουρά
- Ρώσικο πυροβολικό
- Ναύσταθμος
- Τάμβου
- Λοιπά
- Ερείπια**
- Αρχαία**
- Αρχαίες Θέσεις
- Κάστρα – Ακροπόλεις
- Αρχαία ελληνικά ερείπια
- Μεσαιωνικά
- Νεότερα/Σύγχρονα**
- Ερειπωμένα χωριά
- Ερειπωμένα κτίσματα
- ΔΙΚΤΥΟ ΕΠΙΚΟΙΝΩΝΙΩΝ**
- Δρόμοι
- Γεφύρια
- Χώμα

## Corone

Σύγχρονη ονομασία:  
Νομός (1852):  
Επαρχία (1852):

Κορώνη  
Μεσσηνία  
Πύλος

Σημ.: Διαστρέψαι η ορθογραφία του πρωτοτύπου

### Τεκμηριώσεις

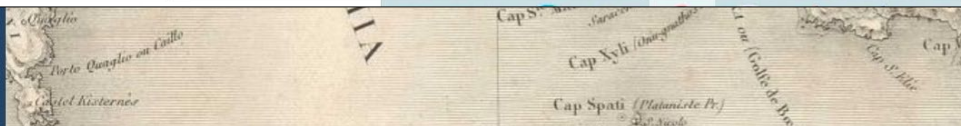


Τεκμηρίωση 4 [ID:104]

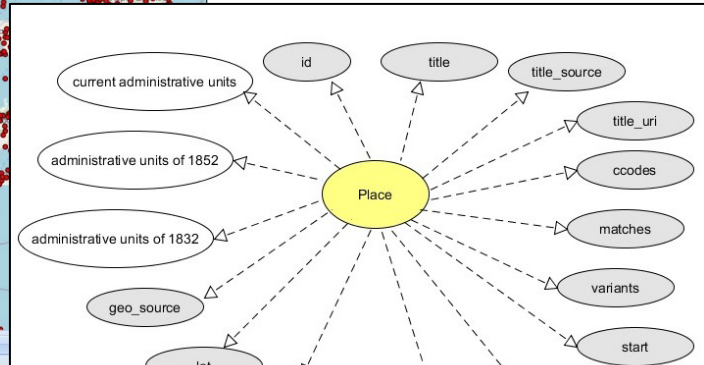
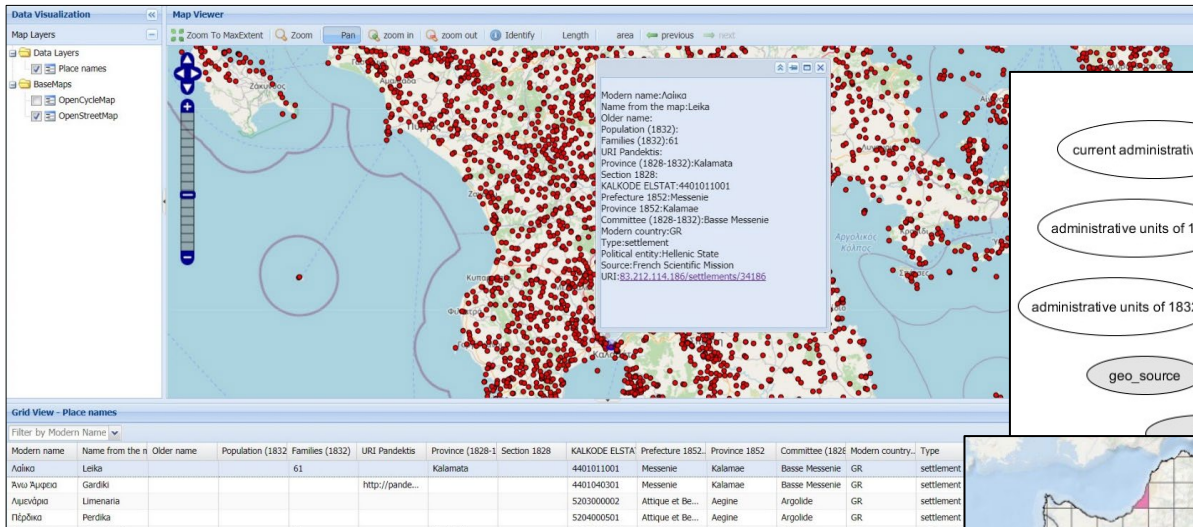


ENTRÉE DE CORONE

Το πρόγραμμα



# Partner | Historical Gazetteer of geographical entities

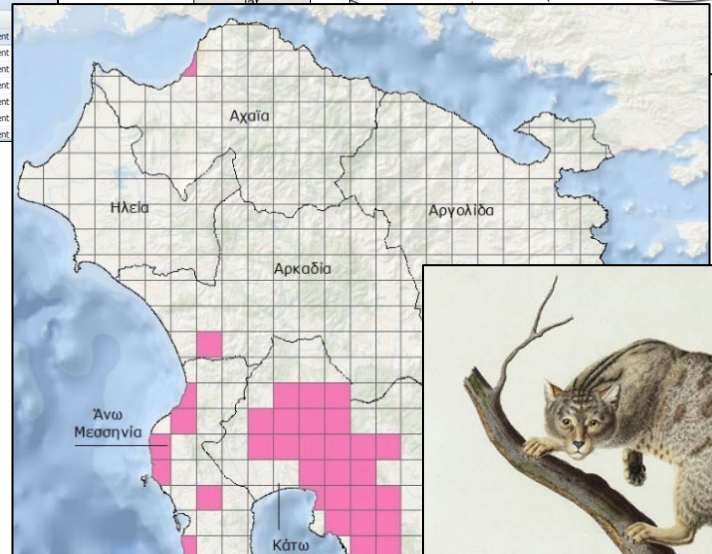


World Historical Gazetteer v1.0 guide | contact us | Search API Tutorials About Data Logout

Grèce de Eleni Metadata Browse Reconciliation Sharing Log & Comments

pid	1.	src_id	1.	title	1.	ccodes	1.	geom?
6532310	1			Sparte		GR		☑
6532311	2			Kalame		GR		☑
6532312	3			Τρίπολις		GR		☑
6532313	4			Nauplie		GR		☑
6532314	5			Patras		GR		☑
6532315	6			Monemvasia		GR		☑
6532316	7			Spetzia		GR		☑
6532317	8			Gythion		GR		☑
6532318	9			Mistra		GR		☑
6532319	10			Leonidio		GR		☑

Showing 110 of 9,304 entries



ΧΑΡΟΚΟΠΕΙΟ ΠΑΝΕΠΙΣΤΗΜΙΟ  
 HAROKOPIO UNIVERSITY

ΕΘΝΙΚΟ ΙΔΡΥΜΑ ΕΡΕΥΝΩΝ  
 NATIONAL Hellenic RESEARCH FOUNDATION

<https://atlasnature-elenigad.hub.arcgis.com/pages/engl>

# Partner 1 | Manar al-Athar Photo-Archive

Development of a tool for automatically georesolving (generating gazetteer URIs) for places in tabular data:

<https://github.com/pelagios/simple-gazetteer-server>

1 Upload CSV

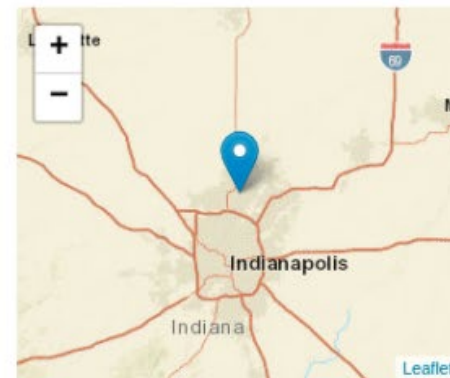


1 / 1



## 2 Record

ID	114607
Caption	Bethlehem - Church of the Nativity - mosaics
Country	
<b>Matched to</b>	
GeoNames	Carmel (US)
Name	<a href="http://sws.geonames.org/4255466">http://sws.geonames.org/4255466</a>
Variants	Karmel;Karmel';Кармель;ka mei er;karml ayndyana;Bethlehem;Кармел;kameru; ایندیاننا, کارمل, کارمے, کارمے ل;Carmel;Bethlehem;کارمل;카멜;kameol;卡梅尔; انڈیاننا, کارمل;karml



## Alternatives

Bethlehem



ID	Title	Country	Type	
<a href="#">4255466</a>	Carmel	United States	populated place	<a href="#">Select</a>
<a href="#">5180225</a>	Bethlehem	United States	populated place	<a href="#">Select</a>
<a href="#">1019704</a>	Bethlehem	South Africa	seat of a third-order administrative division	<a href="#">Select</a>
<a href="#">284315</a>	Bethlehem	Palestine	seat of a second-order administrative division	<a href="#">Select</a>
<a href="#">1019711</a>	Bethlehem	South Africa	airport	<a href="#">Select</a>

## Partner 2 | Semantic Tags Widget for Recogito and Annotorious

Developed with Performant Software: <https://github.com/performant-software/recogito-semantic-tags>  
<https://observablehq.com/@rsimon/annotorious-intro>

A semantic tagging widget for **RecogitoJS** and **Annotorious**. Live demo available [here](#). Detailed documentation is on the [GitHub](#).

The  
drop

had  
dessa  
gods  
not y  
ing a



- SRU endpoint of the Bibliothèque nationale de France
- the API endpoint of the JISC LibraryHub Discover service
- API endpoint of the Digital Public Library of America

Q510455 Ulysses

city in and the county seat of Grant County, Kansas, United

# Partner 3 | Peripleo Lite, a JavaScript viewer for geospatial linked data

Developed with the Digital Periegesis project:

<https://medium.com/pelagios/early-steps-in-digitally-mapping-pausaniass-description-of-greece-548301b2a54d>

## Getae

Greco-Roman civilization, 750 BCE - 640 CE

Getai, Γέται, Γέται

Pleiades

ToposText

## Pausanias Book 1

Map all places  Places in view

Chapter 1 Section 1

τῆς ἡπείρου τῆς Ἑλληνικῆς κατὰ νήσους τὰς Κυκλάδας καὶ πέλαγος τὸ Αἰγαῖον ἄκρα Σούνιον πρόκειται γῆς τῆς Ἀττικῆς· καὶ λιμὴν τε παραπεύσαντι τὴν ἄκραν ἐστὶ καὶ ναὸς Ἀθηνᾶς Σουνιαδος ἐπὶ κορυφῇ τῆς ἄκρας· πλέοντι δὲ ἐς τὸ πρόσω Λαύριόν τε ἐστίν, ἔνθα ποτὲ Ἀθηναῖοις ἦν ἀργύρου μέταλλα, καὶ νῆσος ἔρημος οὐ μεγάλη Πατρόκλου καλουμένη· τεῖχος γὰρ ὠκοδομήσατο ἐν αὐτῇ καὶ χάρακα ἐβάλετο Πάτροκλος, ὃς τριήρεσιν ὑπέπλει ναύαρχος Αἰγυπτίαις, ἃς Πτολεμαῖος ὁ Πτολεμαίου τοῦ Λάγου τιμωρεῖν ἔστειλεν Ἀθηναίους, ὅτε σφίσιιν Αντίγονος ὁ Δημητρίου στρατιᾶ τε αὐτὸς ἐσβεβληκῶς ἔφθειρε τὴν χώραν καὶ ναυσὶν ἅμα ἐκ θαλάσσης κατεΐργεν.

Section 2

ὁ δὲ Πειραιεὺς δῆμος μὲν ἦν ἐκ παλαιοῦ, πρότερον δὲ πρὶν ἢ Θεμιστοκλῆς Ἀθηναῖοις ἤρξεν ἐπίνειον οὐκ ἦν· Φαληρὸν δὲ— ταῦτα γὰρ ἐλάχιστον ἀπέχει τῆς πόλεως ἢ θάλασσα — τοῦτό



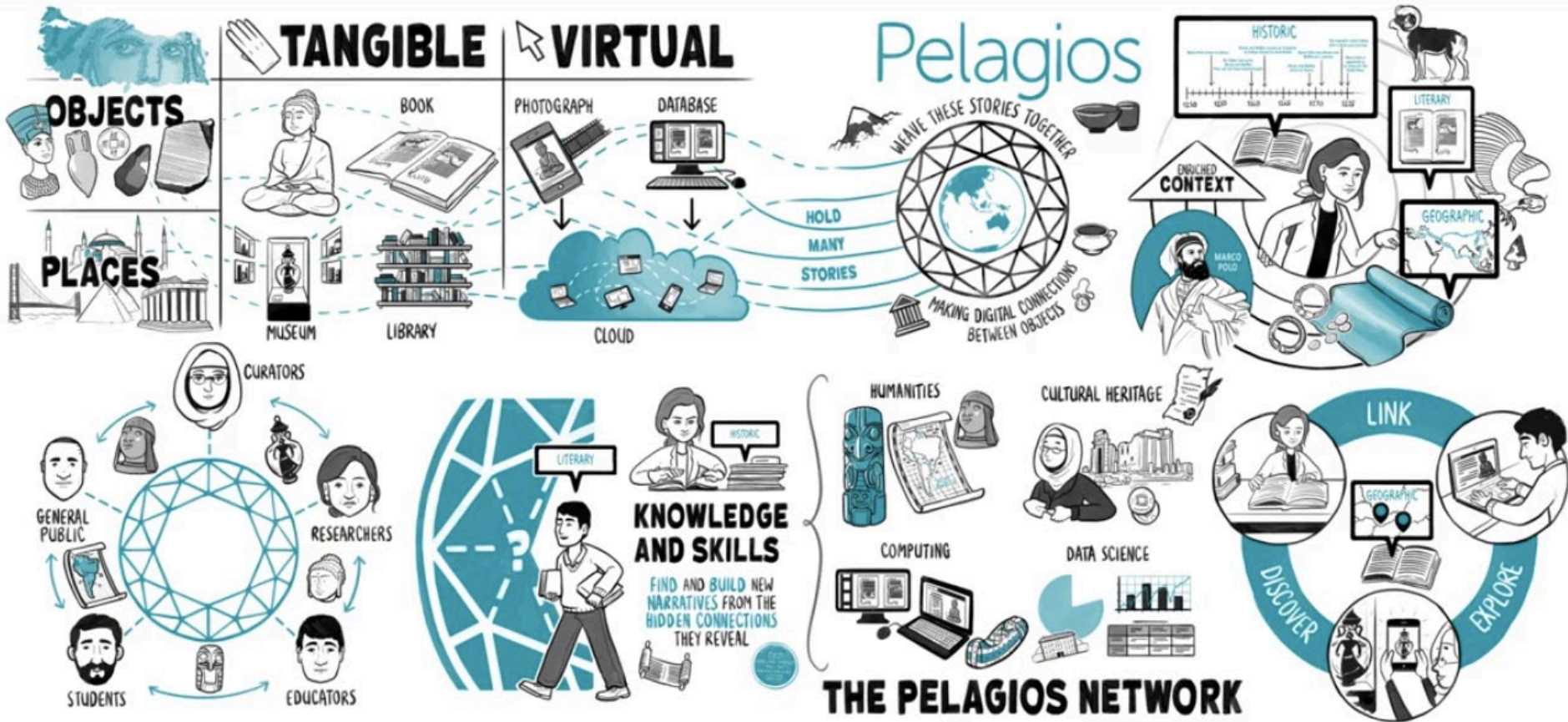
# Pelagios | Peripleo LaNC

<https://britishlibrary.github.io/locating-a-national-collection/home.html>

The screenshot displays the Peripleo LaNC interface, which is a map-based search tool for locating national collections. The main map shows the United Kingdom with numerous green and blue markers indicating collection locations. A search bar at the top left contains the text "Enter your search" and shows "16,473 Results". A filter menu is open, showing "Type: Bridge" selected, resulting in "26 Results". A secondary filter "Has Image" is also active, with a yellow bar indicating "26 With Image". A detailed view of the Northampton Bridge is shown, featuring a historical drawing of the bridge and the following text:

**Northampton Bridge**  
Hollar [↗](#)  
Link opens a new tab  
**Bridge**

Join us



IF YOU'D LIKE TO **JOIN US**, IT'S **FREE, EASY** AND **OPEN** TO ALL! EVERY **CONTRIBUTION** IS **WELCOME**.  
SO TO BECOME PART OF THE **PELAGIOS STORY**, CLICK ON THE **LINK**