

**STONE AGE CULTURE IN CYPRUS
TRACED TO THE 4TH MILLENNIUM B.C.**

**THE FIRST NEOLITHIC BURIAL
DISCOVERED IN THE ISLAND.**



FIG. 1. A PAINTED BOWL FROM ERIMI: AN EXAMPLE FROM AN ABUNDANCE OF POTTERY FOUND IN THE FOURTH LAYER OF THE EXCAVATIONS.

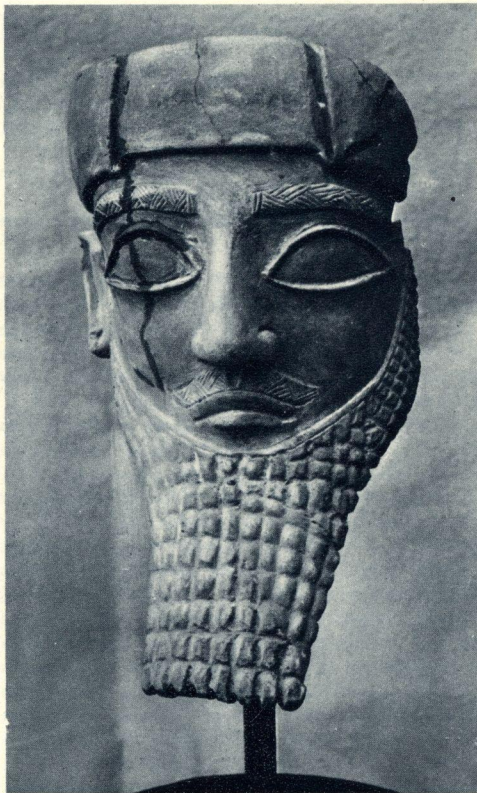


FIG. 2. A TERRACOTTA HEAD OF A BEARDED MAN FROM THE TEMPLE SITE NEAR KYRENIA: SCULPTURE OF THE SIXTH CENTURY B.C.

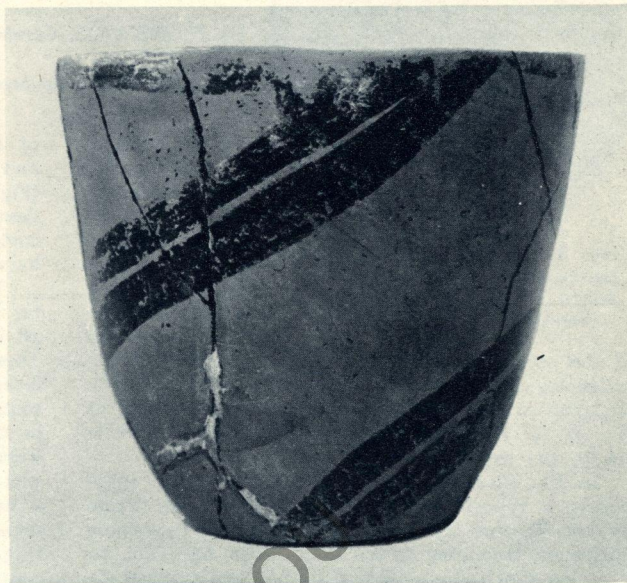


FIG. 3. A PAINTED BOWL FROM ERIMI: ANOTHER SPECIMEN FROM THE SAME STRATUM AS THAT IN FIG. 1, WITH SLIGHTLY DIFFERENT DECORATION.



FIG. 4. THE IMPORTANT FIFTH LAYER OF THE ERIMI EXCAVATIONS, WHICH DISCLOSED TWO ADJACENT NEOLITHIC CIRCULAR HOUSES (FIG. 6 AND ANOTHER) WELL PRESERVED: A VIEW SHOWING THE VILLAGE OF ERIMI IN THE BACKGROUND.



FIG. 5. NEOLITHIC IDOLS FROM CYPRUS: (LEFT) A HEAD IN TERRACOTTA; (CENTRE) A CROSS-SHAPED FIGURE IN STEATITE, WEARING A MODEL OF ITSELF AS A NECKLACE PENDANT; (RIGHT) A FEMALE FIGURE IN TERRACOTTA.



FIG. 6. OF UNIQUE IMPORTANCE AS REVEALING THE FIRST STONE AGE BURIAL FOUND IN CYPRUS: A NEOLITHIC CIRCULAR HOUSE IN THE FIFTH LAYER AT ERIMI, SHOWING THE SKELETON (FIG. 7) IN A GRAVE OUTSIDE THE WALL (RIGHT FOREGROUND).



FIG. 7. THE FIRST NEOLITHIC BURIAL DISCOVERED IN CYPRUS: A CLOSE VIEW OF THE SKELETON (SHOWN IN FIG. 6) PLACED, IN A DOUBLED-UP POSITION, IN A SIMPLE GRAVE SURROUNDED WITH STONES OUTSIDE A HOUSE.

The above photographs illustrate the latest archaeological discoveries in Cyprus, made during excavations conducted on behalf of the Cyprus Museum, as described by its Curator, M. Dikaios, in the article on the next page. Our illustrations are numbered to correspond with his references. The results of the 1934 season, which he explains, have carried back to a still earlier period the traces of Neolithic culture in Cyprus revealed by his researches, of which a previous stage was represented by his illustrated article in our issue of December 23, 1933. As he now

points out, Cypriot prehistory was once thought to begin about 3000 B.C., but last year's work has taken it well into the fourth millennium B.C. The most important of the new discoveries is that shown above in Figs. 6 and 7—that of the first Neolithic burial ever found in Cyprus. It was a simple grave, placed just outside the wall of a house, and showing no sign of funeral rites. The body was buried, in a doubled-up position, in a hole in the ground, and surrounded with stones. The house with this grave is one of two found at Erimi.