

# Supporting The Library of the The Endeavor Future Perspective

Eric Mulder  
e.mulder@endinfosys.com



# Endeavor Information Systems

## Three Main Product Lines

 Voyager

EN [Compass]

 LinkFinderPlus

### Employees

- Offices
  - Chicago, USA (headquarters)
  - London, UK
  - Amsterdam, Netherlands
  - Singapore
  - Sydney, Australia
- 160 staff members – 31% with advanced library science degrees

### Customers

- 1150+ Voyager
- 150+ ENCompass
- 200+ LinkFinderPlus
- 10 National Libraries
- 5 continents
- 16 countries



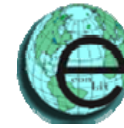
# The Digital Library Challenge

- Today's information resources collections are hybrid
- Combinations of
  - paper and digital format
  - local and remote storage
- Libraries have increasing difficulty managing hybrid collections
- Patrons have increasing difficulty finding what they need



ISI Web of SCIENCE.

[SpringerLink]



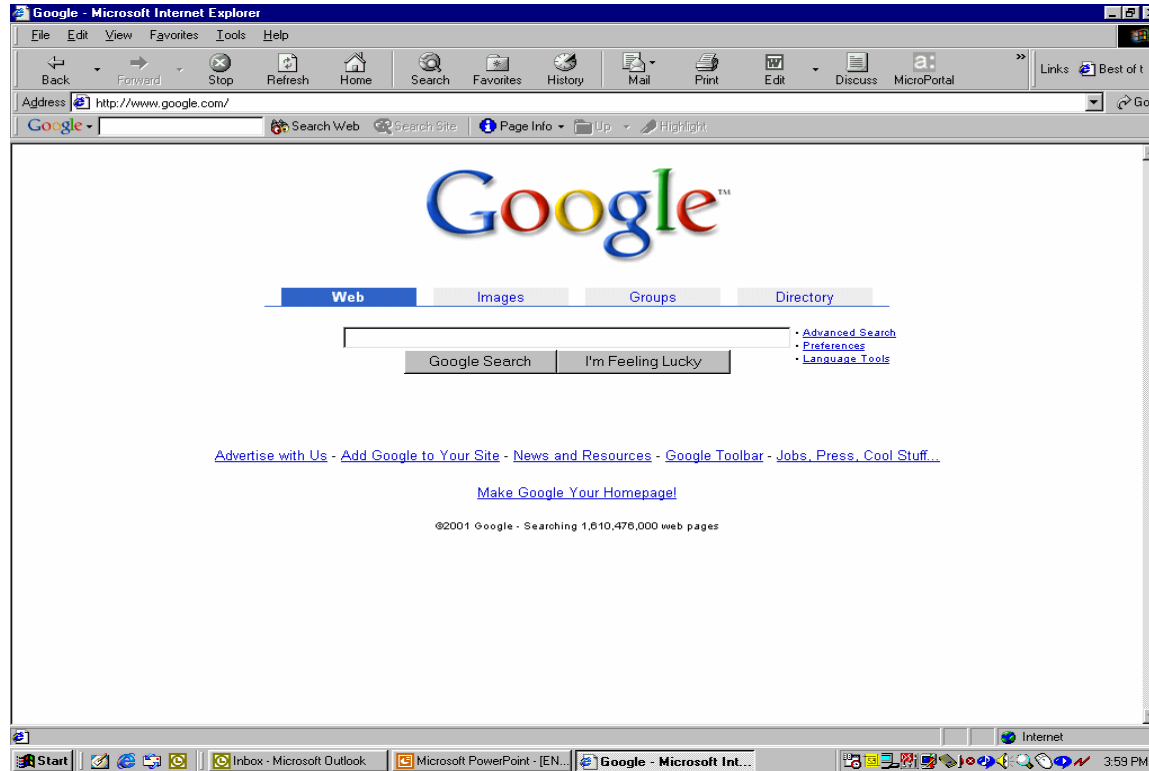
PubMed



SCIENCE @ DIRECT



# If Users Can't Find It...

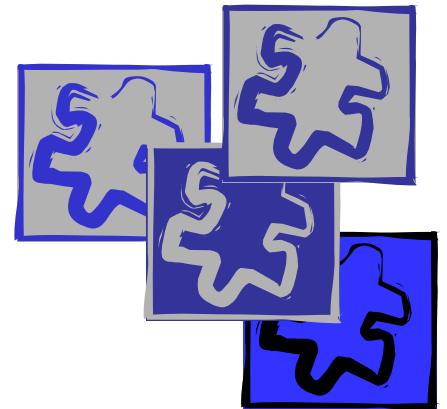


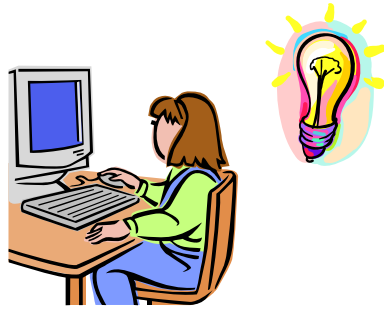
“The **Google**™ Effect”

# The Endeavor Solution

en [compass]

The solution for managing, searching,  
and linking all of your collections

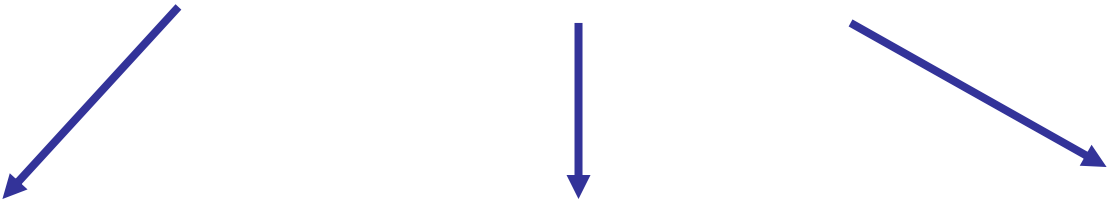




ENCompass

Library System

- Circulation
- Cataloguing
- Acquisitions
- Serials



Local Content

L  
I  
N  
K  
S

Web Content

L  
I  
N  
K  
S

Library OPAC





# ENCompass Building Blocks

Library Operating Systems Modules

Data Management Modules

Remote Resources

Integration Modules



# ENCompass Building Blocks

Library Operating Systems Modules

## Data Management Modules

*Databases which locally store a wide range of metadata and associated objects*

- **MARC records (OPAC)**
- **Full-text articles and Journals**
- **A&I citations**
- **Thesis**
- **Digital audio and video**
- **Digitised maps**
- **etc.**

Remote Resources

Int

# ENCompass Building Blocks

Library Operating Systems Modules

Data Management

Integration Modules

Remote Resources

*Connections to all types of  
online content*

- Commercial publishers
- Free web sites
- Web search engines
- etc.

# ENCompass Building Blocks

Library Operating Systems Modules

Data Management Modules

Remote

Integration Modules

*Integration tools to provide access across all types of data*

**Includes: Linking, Federated searching, E-learning integration, Electronic Resource Management, etc.**

# ENCompass Building Blocks

## Library Operating System Modules

*Modules that provide the overriding structure and architecture to provide context for the library systems*

**Includes: User Interface, Access & Entitlements, Personalisation, Collection Management**

Integration Modules

# ENCompass Solutions

- LinkFinder*Plus*
  - OpenURL Link Resolver
- ENCompass for Resource Access (ERA)
  - Library Portal / Federated Searching
- ENCompass for Digital Collections (EDC)
  - Digital Object Management
- ENCompass for E-Journals On Site (EJOS)
  - E-Journal Archiving
- Meridian
  - Electronic Resource Management
- Course Content Integrator
  - Integration modules for Blackboard and WebCT

# LinkFinder*Plus*

- Context sensitive reference linking
- Generates links to related resources based on citation data
  - *Full text articles*
  - *Print holdings (OPAC)*
  - *Other libraries catalogues*
  - *Internet search engines*
  - *Interlibrary loan*
  - *Etc.*
- Links are offered from any OpenURL enabled source, including the OPAC and ENCompass
- Pre-populated Knowledge Base with >300,000 targets
- Batch import, activation & updating
- Local implementation or Hosted (subscription service)



Refine Search Results

To print, e-mail, or save an article or citation, add it to your folder.

◀ 1 to 10 (of 61) ▶ Pages: 1 2 3 4 5 ▶

 Add (1-10)

1. [Seeing spots](#). By: Stein, Lisa. U.S. News & World Report, 6/23/2003, Vol. 134 Issue 22, p10, 1/5p; (AN 10013611)

 [HTML Full Text](#) Add

2. [Medicine, myths, and the movies](#). By: Raj, Y. Pritham. Postgraduate Medicine, Jun2003, Vol. 113 Issue 6, p9, 3p, 1c; (AN 10025786)

 [HTML Full Text](#) Add

3. [Exhibition aims to bring home reality of smoking](#). By: Ferriman, Annabel. BMJ: British Medical Journal, 5/24/2003, Vol. 326 Issue 7399, p1104, 1/4p, 1bw; (AN 9914315)

 [HTML Full Text](#) [PDF Full Text](#) (279K) Add

4. [I'd like to thank the Hackademy...](#) By: Dunleavy, Natalie. CMAJ: Canadian Medical Association Journal, 5/13/2003, Vol. 168 Issue 10, p1310, 1/3p, 1c; (AN 9688806)

 [HTML Full Text](#) [PDF Full Text](#) (145K)

5. [Biograph](#). By: Martindale, David. Biography, Apr2003, Vol. 7 Issue

 [HTML Full Text](#) [PDF Full Text](#) (424K)

6. [NEWS IN BRIEF](#). Lancet, 3/1/2003, Vol. 361 Issue 9359, p759, 1p

 [HTML Full Text](#) [PDF Full Text](#) (41K)

7. [Interpretations of smoking in film by older teenagers](#). By: McCool, Judith P.; Cameron, Linda D.; Petrie, Keith J.. Social Science & Medicine, Mar2003, Vol. 56 Issue 5, p1023, 10p; DOI: 10.1016/S0277-9536(02)00096-5; (AN 9160709)

[References \(33\)](#) Add

8. [The Ties That Bind](#). By: Grossman, Lev. Time, 2/10/2003, Vol. 161 Issue 6, p89, 1/4p, 3c; (AN 9016516)

 [HTML Full Text](#) Add

# Where can I find the article?



EBSCOhost - Microsoft Internet Explorer provided by Comcast High-Speed Internet

File Edit View Favorites Tools Help Links »

Refine Search Results

1 to 10 (of 61)

1. [Seeing spots](#). By: ...  
[HTML Full Text](#)
2. [Medicine myths](#) ...  
[HTML Full Text](#)
3. [Exhibition aims to](#) ...  
[HTML Full Text](#)
4. [I'd like to thank t](#) ...  
[HTML Full Text](#)
5. [Biograph](#). By: M: ...  
[HTML Full Text](#)
6. [NEWS IN BRIEF](#) ...  
[HTML Full Text](#)
7. [Interpretations of](#) ...  
[References \(33\)](#)  
[LinkFinder](#)
8. [The Ties That Bind](#) ...  
[HTML Full Text](#)

To print, e-mail, or save an article or citation, add it to your folder.

LinkFinderPlus - Microsoft Internet Explorer provided by Comcast High-Speed Internet

File Edit View Favorites Tools Help Links »

# LinkFinderPlus

Endeavor  
Information Systems Incorporated

## Citation Information

[Edit Citation](#)

**Article Title:** Interpretations of smoking in film by older teenagers.  
**Source:** Social Science & Medicine (0277-9536); Volume: 56; Issue: 5; Date: 2003

## Links to Full Text, Abstracts, Journals, etc.

document [Elsevier Science's ScienceDirect](#) ←

article [SwetsNet](#)

article [Ingenta](#)

abstract [SwetsNet](#)

## Explore Related Information

<b>Check for Print Holdings</b> <a href="#">Check the Local catalog for Holdings</a>	<b>Check Other Library Catalogs</b> <a href="#">Ohio State University Catalog (Innovative)</a> <a href="#">ORBIS Title Search (Yale Catalog)</a>
<b>Document Delivery Request</b> <a href="#">Request Article from ILL</a> <a href="#">British Library Document Delivery Request</a>	<b>Internet Search Engines</b> <a href="#">All The Web - Article Title Search</a> <a href="#">All The Web - Author Search</a>

Done Internet

http://207.56.64.68:8088/lfp/LinkFinderPlus/Display?&genre=article&issn=02779536&volume=56&issue=5&date=20030301&spage=1023&sid Internet

EBSCOhost - Microsoft Internet Explorer provided by Comcast High-Speed Internet

File Edit View Favorites Tools Help Links >>

Refine LinkFinderPlus - Microsoft Internet Explorer provided by Comcast High-Speed Internet

File Edit View Favorites Tools Help Links >>

1. Citatic

2. Article T

3. Source:

4. Links

5. document

6. article

7. article

8. abstract

9. Explor

10. Check fo

11. Check th

12. Docume

13. Request

14. British L

15. 8.

ScienceDirect - Social Science & Medicine : Interpretations of smoking in film by older teenage - Microsoft Internet Explorer p

File Edit View Favorites Tools Help Links >>

ELSEVIER SCIENCE @ DIRECT

Login: user name Password: Go

Home Search Journals Abstract Databases Reference Works My Alerts My Profile ? Help

Quick Search: within All Full-text Sources Go ? Search tips

[Social Science & Medicine](#)  
Volume 56, Issue 5, March 2003, Pages 1023-1032

[doi:10.1016/S0277-9536\(02\)00096-5](https://doi.org/10.1016/S0277-9536(02)00096-5) ? Cite or link using doi  
Copyright © 2002 Published by Elsevier Science Ltd.

## Interpretations of smoking in film by older teenagers

Judith P. McCool<sup>a</sup>, Linda D. Cameron<sup>b</sup> and Keith J. Petrie<sup>a</sup>

<sup>a</sup> Health Psychology and Practitioner Development Unit, Faculty of Medicine and Health Science, The University of Auckland, Private Bag 92019, Auckland, New Zealand

<sup>b</sup> Department of Psychology, Faculty of Science, The University of Auckland, Auckland, New Zealand

Available online 4 April 2002.

This Document

- [SummaryPlus](#)
- ▶ [Full Text + Links](#)
- [PDF \(117 K\)](#)

External Links

- [LinkFinderPlus](#)

Actions

- [Cited By](#)
- [Save as Citation Alert](#)
- [E-mail Article](#)
- [Export Citation](#)

**Abstract**



# Target Configuration

[Help](#)

To configure targets:

1. Select the provider's site from the drop-down list.
2. Change values for any of the targets, as needed.
3. Save your changes (or cancel).

The European Mathematical Information Service

The European Mathematical Information Service : 47 journals [?](#)

Enter the first letters of a journal title and click "Go":

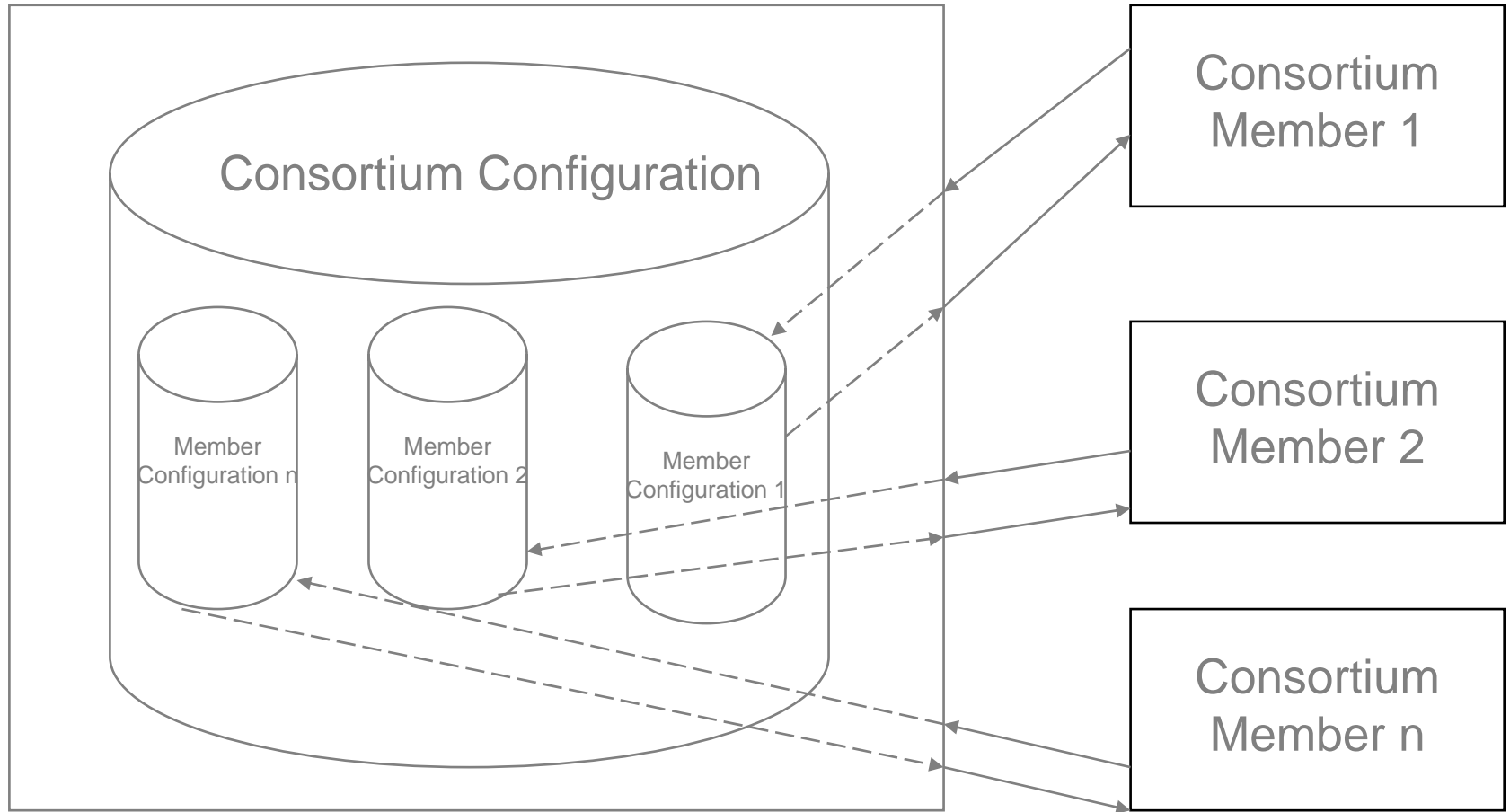
Display  targets

For definitions of fields, click the field headings.

		<input type="button" value="Select All"/>	<input type="button" value="Clear All"/>	<input type="button" value="Select All"/>	<input type="button" value="Clear All"/>		
		<input type="button" value="Activate"/>	<input type="button" value="Invoke"/>				
Title	Rank	Activate	Invoke	Start Date	End Date		
Acta Mathematica Academiae Paedagogicae Nyiregyháziensis	<input type="text" value="200"/>	<input checked="" type="checkbox"/>	<input type="checkbox"/>	<input type="text"/>	<input type="text"/>		
Acta Mathematica Universitatis Comenianae	<input type="text" value="200"/>	<input checked="" type="checkbox"/>	<input type="checkbox"/>	<input type="text"/>	<input type="text"/>		
Algebraic & Geometric Topology	<input type="text" value="200"/>	<input checked="" type="checkbox"/>	<input type="checkbox"/>	<input type="text"/>	<input type="text"/>		
Annales Academiae Scientiarum Fennicae-Mathematica	<input type="text" value="200"/>	<input checked="" type="checkbox"/>	<input type="checkbox"/>	<input type="text"/>	<input type="text"/>		
Applied Mathematics E-Notes	<input type="text" value="200"/>	<input checked="" type="checkbox"/>	<input type="checkbox"/>	<input type="text"/>	<input type="text"/>		

# Basic Features

LinkFinder*Plus* Consortium Server



# ENCompass for Resource Access

- Single point of access to remote (online) resources:
  - *E-journals*
  - *A&I databases*
  - *Websites*
  - *etc,*



- Basic and advanced searching
- Multi-protocol: Z39.50, HTTP, XML Gateway
- Sophisticated processing of result sets
- Resource discovery
- Virtual collections
- Completely configurable user interface (XSLT)
- Personalisation

# ENCompass gives users easy access to all the library resources.

## The complete interface can be customised by the library

Quick Navigation: Go to...

Browse/Search | Find Resources

Global Keyword

10

Records per Page

search

Basic Search | Advanced Search

Choose collection(s) below to search:

### Login

Login to gain access to certain restricted records and to use personalization features, including saving searches and creating your own personal collection

### Search History

No entries

### Saved Searches

Please Login

### Saved Records

Please Login

## Library Collections

Include library catalog in search?

Expand	Select	Description
	<input type="checkbox"/>	A to Z List of Electronic Resources <a href="#">View Description</a>
	<input type="checkbox"/>	Additional Resources <a href="#">View Description</a>
	<input type="checkbox"/>	Arts and Humanities <a href="#">View Description</a>
	<input type="checkbox"/>	Business, Law, and Government <a href="#">View Description</a>
	<input type="checkbox"/>	General Interest and Popular Collections <a href="#">View Description</a>
	<input type="checkbox"/>	Life and Health Sciences <a href="#">View Description</a>
	<input type="checkbox"/>	Other Library Catalogs <a href="#">View Description</a>
	<input type="checkbox"/>	Physical Sciences and Engineering <a href="#">View Description</a>
	<input type="checkbox"/>	Social Sciences and Education <a href="#">View Description</a>
	<input type="checkbox"/>	Special Collections <a href="#">View Description</a>

View XML

The Library Collections are organised by the library in such a way that it is easy for the user to find the resources

Quick Navigation: Go to...

Browse/Search | Find Resources

Global Keyword

pediatric surgery

10

Records per Page

search

Basic Search | Advanced Search

Choose collection(s) below to search:

### Library Collections

Include library catalog in search?

Expand Select Description

Expand	Select	Description
	<input type="checkbox"/>	A to Z List of Electronic Resources <a href="#">View Description</a>
	<input type="checkbox"/>	Additional Resources <a href="#">View Description</a>
	<input type="checkbox"/>	Arts and Humanities <a href="#">View Description</a>
	<input type="checkbox"/>	Business, Law, and Government <a href="#">View Description</a>
	<input checked="" type="checkbox"/>	General Interest and Popular Collections <a href="#">View Description</a>
	<input type="checkbox"/>	Life and Health Sciences <a href="#">View Description</a>
	<input type="checkbox"/>	Biology <a href="#">View Description</a> [ Collection ]
	<input type="checkbox"/>	Infectious Disease Collection <a href="#">View Description</a> [ Collection ]
	<input checked="" type="checkbox"/>	Medicine <a href="#">View Description</a> [ Collection ]
	<input type="checkbox"/>	Cardiology e-Journal Collection <a href="#">View Description</a> [ Collection ]
	<input type="checkbox"/>	Pain <a href="#">View Description</a> [ Collection ]
	<input type="checkbox"/>	PsycINFO Database <a href="#">View Description</a> [ Collection ]
	<input type="checkbox"/>	PubMed <a href="#">View Description</a> [ Collection ]
	<input type="checkbox"/>	The Lancet <a href="#">View Description</a> [ Collection ]
	<input type="checkbox"/>	Nursing <a href="#">View Description</a> [ Collection ]
	<input checked="" type="checkbox"/>	Other Library Catalogs <a href="#">View Description</a>
	<input type="checkbox"/>	Physical Sciences and Engineering <a href="#">View Description</a>
	<input type="checkbox"/>	Social Sciences and Education <a href="#">View Description</a>

to use personalization features, including saving searches and creating your own personal collection

#### Search History

No entries

#### Saved Searches

Please Login

#### Saved Records

Please Login

Personalisation options include creating a personal collection, saving searches, email alerts, exporting records, etc.

Quick Navigation: Go to...

Results Display | Results Summary

Browse/Search | Find Resources

Global Keyword

10

Records per Page

search

Basic Search | Advanced Search

Choose collection(s) below to search:

Hello,

[Edit Personal Collection](#)

[Edit Contact Info](#)

**Search History** [view details](#)

Choose search...

**Saved Searches** [view details](#)

Choose saved search...

**Saved Records**

No entries found

### Personal Collection 'Sandra's Collection' [Rename](#)

#### Select Description

- | Select                   | Description  |
|--------------------------|--|
| <input type="checkbox"/> | Social Sciences and Education [ Collection ] <a href="#">View Description</a>            |
| <input type="checkbox"/> | Physical Sciences and Engineering [ Collection ] <a href="#">View Description</a>        |
| <input type="checkbox"/> | General Interest and Popular Collections [ Collection ] <a href="#">View Description</a> |
| <input type="checkbox"/> | Business, Law, and Government [ Collection ] <a href="#">View Description</a>            |

### Library Collections

Include library catalog in search?

#### Expand Select Description

- | Expand | Select                   | Description   |
|--------|--------------------------|---|
|        | <input type="checkbox"/> | A to Z List of Electronic Resources <a href="#">View Description</a>      |
|        | <input type="checkbox"/> | Additional Resources <a href="#">View Description</a>                     |
|        | <input type="checkbox"/> | Arts and Humanities <a href="#">View Description</a>                      |
|        | <input type="checkbox"/> | Business, Law, and Government <a href="#">View Description</a>            |
|        | <input type="checkbox"/> | Course Reserve Materials <a href="#">View Description</a>                 |
|        | <input type="checkbox"/> | General Interest and Popular Collections <a href="#">View Description</a> |
|        | <input type="checkbox"/> | Lexis Nexis <a href="#">View Description</a>                              |
|        | <input type="checkbox"/> | Life and Health Sciences <a href="#">View Description</a>                 |
|        | <input type="checkbox"/> | Other Library Catalogs <a href="#">View Description</a>                   |
|        | <input type="checkbox"/> | Physical Sciences and Engineering <a href="#">View Description</a>        |



# Search results are presented either by resource or as one de-duplicated list ("Show All")

Quick Navigation: Go to...

Results Summary

[Browse/Search](#) | [Find Resources](#)

### Login

to gain access to certain restricted records and to use personalization features, including saving searches and creating your own personal collection

### Search History [view details](#)

Choose search...

### Saved Searches

Please Login

### Saved Records

Please Login

You did a basic search for "pediatric surgery"

Collection	Search Status
<b>Local Catalog</b>	
<a href="#">Local Library Catalog</a>	5 Hits
<b>General Interest and Popular Collections</b>	
Matter of Fact	No Hits
H.W. Wilson Databases	No Hits
Local Digital Repository	No Hits
<a href="#">Google Search Engine</a>	50 Hits
<a href="#">Amazon Books</a>	25 Hits
<b>Medicine</b>	
<a href="#">PsycINFO</a>	24 Hits
<a href="#">The Lancet</a>	15 Hits
<a href="#">PubMed XML Gateway</a>	20 Hits
<b>Other Library Catalogs</b>	
<a href="#">Tulane University Library (Voyager)</a>	23 Hits
<a href="#">Michigan State University Library (Ill)</a>	26 Hits
<a href="#">Boston College Library (ExLibris)</a>	23 Hits
<a href="#">Evans Library at Texas A&amp;M University</a>	1 Hits

## Login

[Login](#) to gain access to certain restricted records and to use personalization features, including saving searches and creating your own personal collection

Search History [view details](#)

Choose search...







## Saved Searches

Please Login

## Saved Records

Please Login

You did a Free Text search for "wormwood"

... | [Displaying Records 1 - 10 of 103](#) | [More](#)[Absinth and its psychiatric reflexion](#) *Psychiatrie*; Volume 7, Issue 2; 2003; Pages 96-99Source: EMBASE  [Absinthe - The renaissance of the green fairy](#) *Aktuelle Ernährungsmedizin*; Volume 29, Issue 3; 2004; Pages 138-141Source: EMBASE  [Actinobacterial chitinase-like enzymes: profiles of rhizosphere versus non-rhizosphere isolates.](#) Ana C Gonzalez-Franco; *Can J Microbiol*; Vol: 49 Issue: 11; Nov 2003; 683-98Source: PubMed XML Gateway [Active components from Artemisia iwayomogi displaying ONOO\(-\) scavenging activity.](#) Ae Ra Kim; *Phytother Res*; Vol: 18 Issue: 1; Jan 2004; 1-7Source: PubMed XML Gateway [Activity of novel plant extracts against medullary thyroid carcinoma cells.](#) Beate Rinner; *Anticancer Res*; Vol: 24 Issue: 2A; 495-500Source: PubMed XML Gateway [Allergenic airborne pollen and spores in Anchorage, Alaska](#) *ANN. ALLERGY*; Volume 54, Issue 5; 1985; Pages 390-399Source: EMBASE  [Alternative therapies. Wormwood.](#) Amy J Skyles; *Am J Health Syst Pharm*; Vol: 61 Issue: 3; Feb 2004; 239-42Source: PubMed XML Gateway [An affordable antimalarial.](#) David J Tenenbaum; *Environ Health Perspect*; Vol: 112 Issue: 1; Jan 2004; A25Source: PubMed XML Gateway [An oligosaccharide fraction from Korean mugwort herb suppresses death of the mouse thymocytes in culture by down-regulating the Fas death receptor gene.](#) Hye Kyung Chung; *Biotechnol Lett*; Vol: 25 Issue: 18; Sep 2003; 1549-53Source: PubMed XML Gateway [Analysis of artemisinin by a packed-column supercritical fluid chromatography-atmospheric pressure chemical ionisation mass spectrometry technique.](#) Kenan Dost; *Analyst*; Vol: 128 Issue: 8; Aug 2003; 1037-42

From the result user click directly through to the article or the native interface of the resource

The screenshot displays the EN Compass 'Full Record Display' interface. At the top, the EN Compass logo is on the left, and 'Full Record Display' is centered. On the right, there are 'Help' and 'Exit' buttons. Below the header is a navigation bar with 'Quick Navigation: Go to...' and a dropdown menu. To the right of this bar are links for 'Results Display', 'Results Summary', 'Browse/Search', and 'Find Resources'. On the far right of the navigation bar are 'Previous' and 'Next' buttons.

The main content area is divided into a left sidebar and a central record display. The sidebar contains sections for 'Login' (with a 'Login' button and text about restricted records), 'Search History' (with a 'view details' link and a 'Choose search...' dropdown), 'Saved Searches' (with a 'Please Login' prompt), and 'Saved Records' (with a 'Please Login' prompt). The central record display shows a search result for 'pediatric surgery' with buttons for 'view relationships' and 'add to saved records'. The record details are as follows:

Database	The Lancet
Title	Absence of the inferior labial and lingual frenula in Ehlers-Danlos syndrome
Creator	Claudio De Felice, Paolo Toti, Giovanni Di Maggio, Stefano Parrini and Franco Bagnoli
ISSN	01406736
Journal Name	The Lancet
Volume and Issue	Volume 357
Date	12 May 2001
Pages	Pages 1500

Below the record details is a preview of the ScienceDirect article page. The browser window title is 'ScienceDirect - The Lancet : Absence of the inferior labial and lingual frenula in Ehlers-Danlo - Microsoft In...'. The browser address bar shows 'http://www.sciencedirect.com/science?\_ob=ArticleURL&\_udi:'. The article title is 'Absence of the inferior labial and lingual frenula in Ehlers-Danlos syndrome' by Claudio De Felice, Paolo Toti, Giovanni Di Maggio, Stefano Parrini, and Franco Bagnoli. The DOI is 'doi:10.1016/S0140-6736(00)04661-4'. The abstract is available in full text and PDF (2281 K). There is also an 'E-mail Article' action.

Footnote: <sup>a</sup> Institute of Preventive Paediatrics and Neonatology, Azienda Ospedaliera Senese and University of Siena, Siena, I-53100, Italy

Quick Navigation:

Go to... [Results Display](#) | [Results Summary](#)[Browse/Search](#) | [Find Resources](#)**Login**

[Login](#) to gain access to certain restricted records and to use personalization features, including saving searches and creating your own personal collection

**Search History** [view details](#)Choose search... **Saved Searches**

Please Login

**Saved Records**

Please Login

You did a Free Text search for "wormwood"

[view relationships](#)

Database Source	PubMed XML Gateway
Title	Active components from Artemisia iwayomogi displaying ONOO(-) scavenging activity.
Pub Type	Journal Article
Source	Phytother Res <i>ISSN: 0951-418X Volume: 18 Number/Issue: 1 Date: 2004 Jan Pages: 1-7</i>
Authors	Kim, Ae Ra Zou, Ya Ni Park, Tae Hyun Shim, Kyung Hee Kim, Min Sun Kim, Nam Deuk Kim, Jong Deog Bae, Song Ja Choi, Jae Sue Chung, Hae Young
Affiliation	College of Pharmacy, Pusan National University, Pusan, Korea.
Language	eng
Article ID(s)	PMID: 14750192

[Previous](#) | [Next](#)  
[Extended Services](#)[Retrieve this article from  
Wiley Interscience](#)[Retrieve this article from  
SwetsWise](#)[Retrieve this document  
from EBSCO](#)[Retrieve this abstract from  
NCBI](#)[Retrieve this abstract from  
Infotrieve](#)



Entitlements Manager

Display By: License

- Licensed Content and Rights
  - Domain Restriction
  - Cardiology e-Journal Collection
  - National Historical Survey of Sailing Vessels
  - Faculty Rights List
  - ADFA Collection
  - Course Reserve Materials
  - Repository Not Connected
  - Repository Not Connected
  - Repository Not Connected
  - Repository Not Connected
  - Lexis Nexis
    - Link To LexisNexis XML Gateway
  - The Lancet
  - Repository Not Connected
  - Undergraduate Student
  - Aquatic Science and Fisheries Abstracts**
  - Link To Aquatic Sciences and Fisheries Abstracts

Licenses & Contents Rights Lists & Collections

Rights Lists:

Name	Description
Domain Restriction	Restriction by Domain
Faculty Rights List	Faculty Rights List
Indy's rights	indianapolis campus's rights
Kathryn's Rights List	Domain and User Class Rights
Undergraduate Student	Undergraduate Student

Add... Edit... Delete

- Collections:
- ADFA Collection
  - AIATSI
  - Arts and Humanities
  - Business, Law, and Government**
  - Repository Not Connected
  - Repository Not Connected
  - Link To PubMed XML Gateway
  - Link To Wiley Journals
  - Repository Not Connected
  - Afghanistan
  - Business

# ENCompass for Digital Collections

- Create and maintain local digital collections
- Very flexible metadata structures
  - *Dublin Core, EAD, TEI, full text, custom*
- Online creation or batch loading of descriptive metadata
- All metadata stored in XML (within Oracle tables)
- Multiple databases (“repositories”) in a single system
- Hierarchical organization possibilities
- FAST search engine ensure scalability and performance
- Access and entitlements
- OAI compliant



**login**

login to gain access to certain restricted records and to use personalization features, including saving searches and creating your own personal collection

**Search History** [view details](#)

Choose search...

**Saved Searches**

Base Login

**Saved Records**

Base Login

You did a basic search for "interstellar gas"

[view relationships](#) [add to saved records](#)

[Previous](#) | [Next](#)

Database	
Title	Columns of Cool Interstellar Hydrogen Gas and Dust in M16, the Eagle Nebula
Creator	Jeff Hester and Paul Scowen (Arizona State University)
Subject	Nebula
Subject	Hydrogen
Subject	Eagle Nebula
Subject	Serpens
Subject	Stars
Description	PILLARS OF CREATION IN Nebula) Undersea coral? E like structures are actually c also incubators for new star molecular cloud like stalagr Nebula" (also called M16 -- "fuzzy" objects that aren't c in the constellation Serpens where basalt and other den surrounding landscape has especially dense clouds of r molecule) and dust that hav flood of ultraviolet light from This process is called "phot illuminating the convoluted s boiling away from their surf three-dimensional nature of from base to tip. As the pilla light, small globules of even globules have been dubbed "Globules," but it is also a w



**Search**For  **Go**[Search tips](#) | [Advanced search](#)

Discover &gt;

[▶ Music](#)[▶ \*\*Visual Arts\*\*](#)

## Visual Arts

In this section you can view eight topics featuring works by New Zealand artists, photographers, designers and architects. Each topic includes an essay, a list of further resources and a selection of some of the following: photographs, drawings, prints, paintings, and posters. These topics have been designed to support the Arts/ Nga Toi curriculum in New Zealand schools.

Search this section for any of the words **Go**

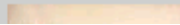
[18th Century and 19th Century New Zealand Art](#)



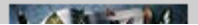
[20th Century New Zealand Art and the Practice of Drawing](#)



[Architecture](#)



[Photography](#)





# SAMUEL J. MAY ANTI-SLAVERY COLLECTION



## Search the May Anti-Slavery Collection

It is recommended that you use browsers no older than **Internet Explorer 5.0** or **Netscape 6.2** when searching this collection

Find:  as:    
 Keyword(s)  Phrase

- ◆ Choose **Phrase** to search two or more words together in the order entered (e.g., west indies)
- ◆ Choose **Keyword(s)** to search single words, or two or more words in any order or in any proximity to each other
- ◆ Do **not** use Boolean operators: and, or, not
- ◆ Use **?** with partial words to find variant endings: abolition? Finds abolition, abolitionist, abolitionists, etc.
- ◆ Unless limited to **Title Keyword**, **Subject Keyword** or **Author Keyword**, search results will include listings for specific pages within pamphlets.

PROJECT DESCRIPTION

HISTORY & CONTENT

SEARCH THE COLLECTION

FAQ & SEARCH TIPS

SAMUEL J. MAY  
BIOGRAPHY

CONSERVATION  
OF THE COLLECTION

LINKS

CREDITS

HOME

CORNELL

## DIVISION OF RARE AND MANUSCRIPT COLLECTIONS

Copyright © 2002 [Division of Rare & Manuscript Collections](#)  
2B Carl A. Kroch Library, Cornell University, Ithaca, NY, 14853  
Phone Number: (607) 255-3530. Fax Number: (607) 255-9524

For information about copyright issues and securing permission to publish digital reproductions of images from the Samuel May Anti-Slavery Collection, please consult our [Copyright & Permissions Page](#).

For reference questions, send mail to: [rareref@cornell.edu](mailto:rareref@cornell.edu)  
For questions or comments about the site, send mail to: [webmaster](mailto:webmaster).

CORNELL UNIVERSITY LIBRARY

# ENCompass for E-journals On Site

- Store Fulltext Journals locally
- Wiley, Springer, Blackwell, Kluwer, Elsevier and more
- Custom data loaders
- Full text searching
- XML based
- Rights management
- Personalization, alerts, saved searches
- Easy administration
- SCALABLE + predictable cost of ownership



# EJOS

Composites Part A: Applied Science and Manufacturing, Articles in Press - Microsoft Internet Explorer

File Edit View Favorites Tools Help

Back Forward Stop Home Search Favorites Media Print Copy Paste Links ENC »

EN **Compass**  
JOURNALS ONSITE

Journals Search My Alerts My Documents Options Help

Search:  Go Search tips Search History Saved Searches

[Journal of Dermatological Science](#)

Articles in Press - [Note to users](#)

Journal Cover

Add to My Documents Export Citations Select Page Clear Page

- Numerical modeling on pultrusion of composite I beam**  
**In Press, Corrected Proof**, Available online: 26 December 2003  
[Liu, X. -L.](#)  
[Abstract](#) | [Full Text](#) | [PDF \(686 K\)](#) | [Open URL](#)  

Pultrusion is one of the most efficient methods for making fiber reinforced polymer composite parts. However, more work needs to be done to develop scientific means for the pultrusion tooling design and process control. This paper describes numerical simulation on the pultrusion of fiberglass-vinyl ester composite I beams using a numerical procedure based on general-purpose FE packages. The theory and numerical implementation of the procedure is briefly introduced. The procedure is verified by good agreement between the predicted temperature profiles and the experimental ones. The effect of...
- Spatial data analysis by epidermal Langerhans cells reveals an elegant system**  
**In Press, Uncorrected Proof**, Available online: 23 December 2003  
[Numahara, Toshihiko](#), [Tanemura, Masaharu](#), [Nakagawa, Toshifumi](#) and [Takaiwa, Takashi](#)  
[Abstract](#) | [Full Text](#) | [PDF \(242 K\)](#) | [Open URL](#)  

Langerhans cells are dendritic cells situated in the mammalian epidermis. In human epidermis, the concentration is between 460 and 1000 mm<sup>-2</sup>. Langerhans cells fulfill an essential role in skin immune responses. Numerous scientific reports on Langerhans cells have appeared, but with no systematic research on the pattern of the spatial distributions. On the contrary, in certain fields, a spatial distribution is an important theme, and spatial data analysis has a long history. We hypothesized that epidermal Langerhans cells were set in the best formation for their immuno-surveillance by a...

Internet

# Course Content Integrator

- Vision: unite course management with library systems
- Alliances with Blackboard and WebCT
- Tools
  - Search library content and create links or searches through the course management system
  - Create pre-defined searches created by an instructor
  - Present learning objects including e-reserves, multimedia, full-text articles, etc.
  - Dynamic search boxes
  - One-click insertion of e-reserves
- Single sign-on
- Persistent URLs

# Example in Blackboard: User can search within library resources that have been pre-selected by the instructor

- Announcements
- Course Information
- Staff Information
- Course Documents
- Assignments
- Communication
- Discussion Board
- External Links
- Tools
- Course Map
- Control Panel
- Quick Unenroll

COURSES > INTRODUCTION TO PSYCHOLOGY > COURSE DOCUMENTS



## Reading Lists



## Interactive Exercises



## Paper Topics and Searches



### Additional Materials

Enter your keyword terms to search databases recommended by your instructor for "Introduction to Psychology"

Search For:



### Childhood readings

You'll be able to put in a larger description for display here.

# Search results are presented within the course management system

- Announcements
- Course Information
- Staff Information
- Course Documents
- Assignments
- Communication
- Discussion Board
- External Links
- Tools
- Course Map
- Control Panel
- Quick Unenroll

### Login

**Login** to gain access to certain restricted records and to use personalization features, including saving searches and creating your own personal collection

### Search History

No entries

### Saved Searches

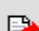
Please Login

### Saved Records

Please Login

... | Displaying Records 1 - 64 of 64 | ...

### Select Description

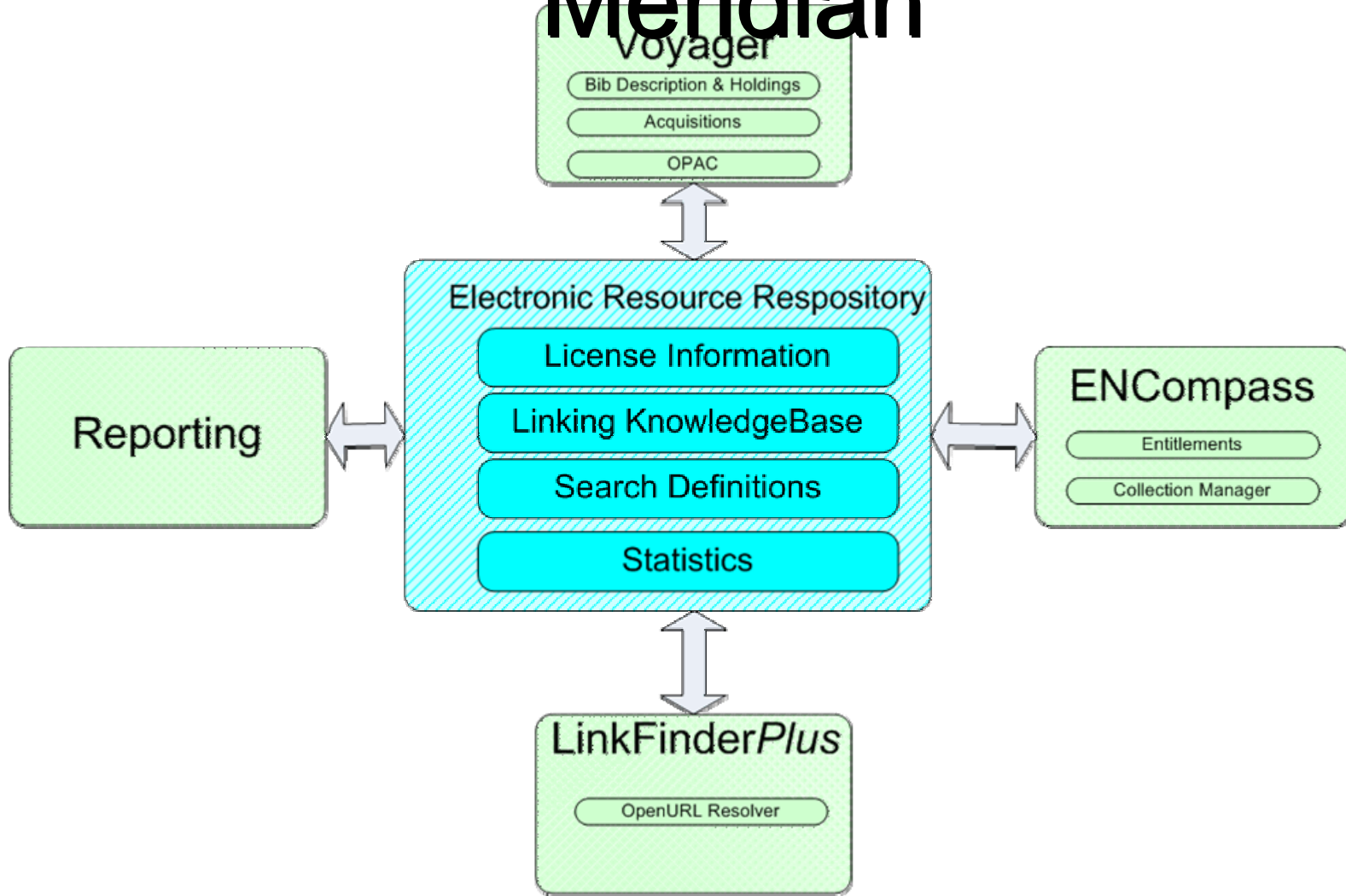
<input type="checkbox"/>	The interpretation of dreams, by Prof. Dr. Sigmund Freud. Authorized translation of 3d ed. with introduction, by A. A. Brill. <a href="#">View Description</a>	 
<input type="checkbox"/>	Albert Pinkham Ryder, painter of dreams / by William Innes Homer and Lloyd Goodrich. <a href="#">View Description</a>	 
<input type="checkbox"/>	The English dream vision : anatomy of a form / J. Stephen Russell. <a href="#">View Description</a>	 
<input type="checkbox"/>	The forgotten language; an introduction to the understanding of dreams, fairy tales, and myths. <a href="#">View Description</a>	 
<input type="checkbox"/>	Books that changed our minds / edited by Malcolm Cowley & Bernard Smith. <a href="#">View Description</a>	 
<input type="checkbox"/>	Sylvia Plath / edited and with an introduction by Harold Bloom. <a href="#">View Description</a>	 
<input type="checkbox"/>	The fate of the dream in contemporary psychoanalysis. <a href="#">View Description</a>	
<input type="checkbox"/>	Psychotherapists' dreams about their patients. <a href="#">View Description</a>	

# Meridian

- Complete solution for Electronic Resource Management
- Single source of information for managing a range of activities related to electronic resources
  - License data
  - Linking information
  - Search definitions
  - Statistics
- Elimination of duplicate data through integration across products
- Improve staff productivity in managing these vital resources

Endeavor  
**Meridian**<sup>TM</sup>

# Meridian



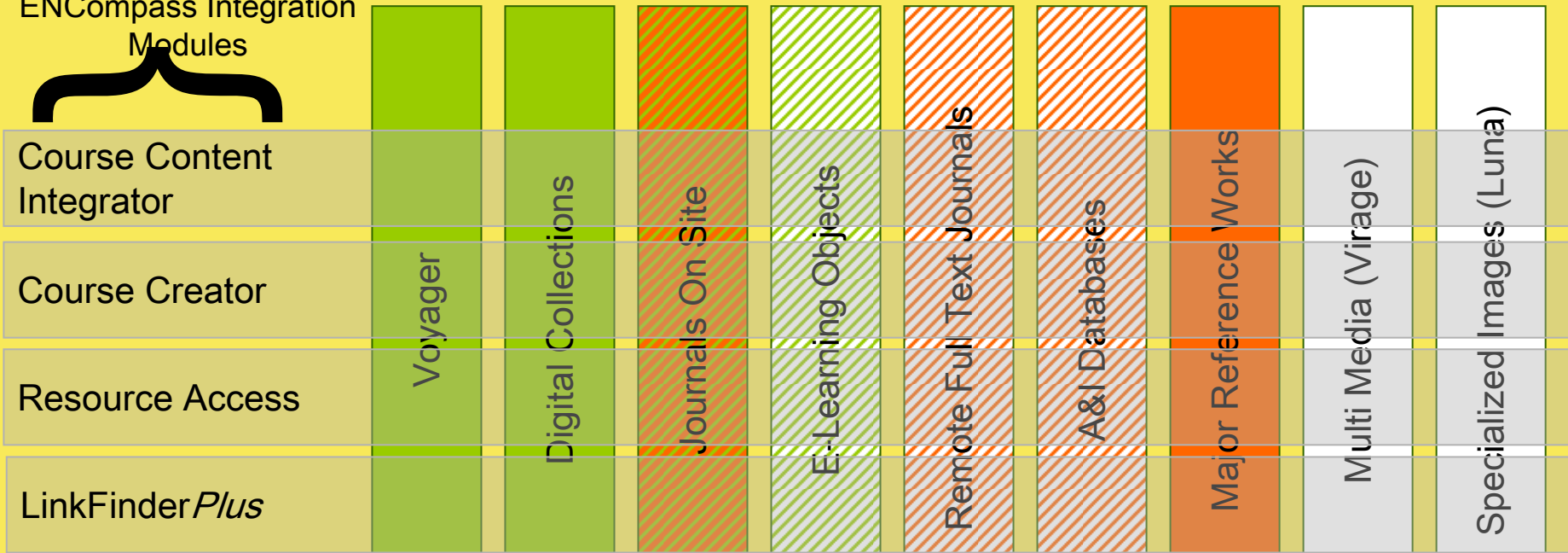
**Endeavor's Electronic Resource Management Solutions**



ENCompass Framework



ENCompass Integration Modules



ENCompass Management Modules

Endeavor

Elsevier

Other Vendors

# ENCompass - Unique Benefits

- Complete digital library framework
- Technology: XML, XSL, Oracle 9i
- Powerful Searching
  - Z39.50, HTTP, XML Gateway
  - FAST Search Engine
- Integration/Interoperability (XML):
  - ScienceDirect
  - SCOPUS
  - E-Learning: Blackboard, WebCT
- Long-term, Sustainable Partner for Libraries
  - Endeavor/Elsevier

# Libraries using ENCompass

- >150 libraries worldwide
  - Cornell University
  - University of Edinburgh
  - National University of Singapore
  - National Library of Medicine (US)
  - London School of Economics
  - University of Auckland
  - National Library of New Zealand
  - CNRS/INIST (France)
  - University of Helsinki
  - University of Western Sydney
  - Open University (UK)
  - University of Toronto
  - Los Alamos
  - British Library

# Thank you and please visit

- **Developing an all science navigation tool together with the scientific community.**

*Sharon Mombro (Product Sales Manager)*

16.00 at the Commercial & Manufacturing Chamber of Corfu (2 Aristotelous Str. and Kapodistriou).

Thank you!