

Introducing SciVerse

@19th Hellenic Conference of Academic Libraries

Eduardo Ramos

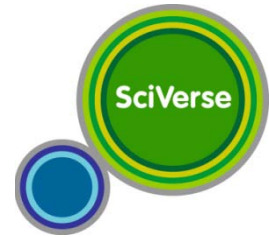
Account Development Manager

Southern Europe & Israel

e.ramosilva@elsevier.com



Table of Contents



- 1. Why is Elsevier Launching SciVerse?**
- 2. What is SciVerse?**
- 3. When will I see SciVerse?**

Extraordinary Times Require Extraordinary Thinking

Challenges facing librarians

- Shrinking library budgets due to economic downturn
- Increased scrutiny and pressure on demonstrating return on investment
- Broader range of research products available in the market

“Libraries are attempting to face a future in which almost every fixed point has disappeared. Users are changing; content is changing; research is taking new forms.”

Derek Law

Centre for Digital Library Research

We conducted 3,000 interviews with librarians and researchers

SciVerse



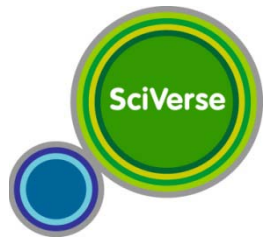
“....Twenty years ago there were one-third as many journals in my field. Now it would take one day each week just to keep up . . .”



“....In a very popular topic, you may hit 500 articles. I try different queries and get 50-100, but only 20% are useful. It's about the efficiency of the time you spend vs. the output....”

“I've got 5,000 *pdf* files that I've downloaded on my computer, seriously. I've tried renaming them so that I can find the right one when I need it, but it hasn't worked....”

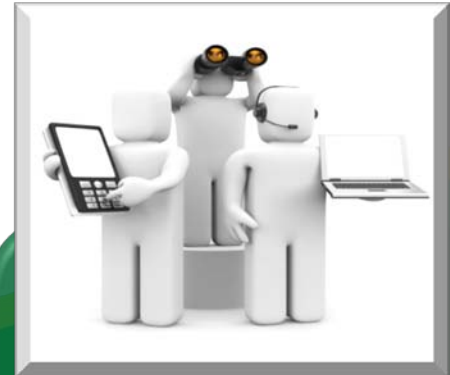
Key web trends defining the future



**Openness &
Interoperability**

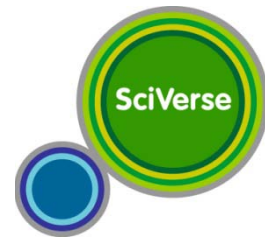


Personalization



**Collaboration &
Trusted Views**

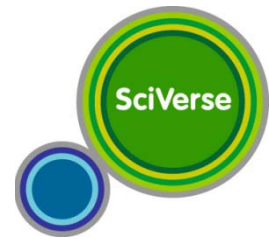
Openness and Interoperability



"Give me your data, my way"

Access to APIs and creating an ecosystem that brings together core base of users and tools to build applications

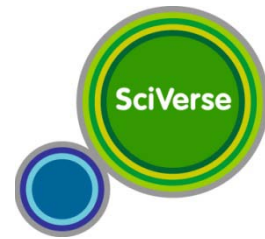
Personalization



“Know who I am and what I want”

**Deliver recommendations based on behavior
and what might be of interest to them**

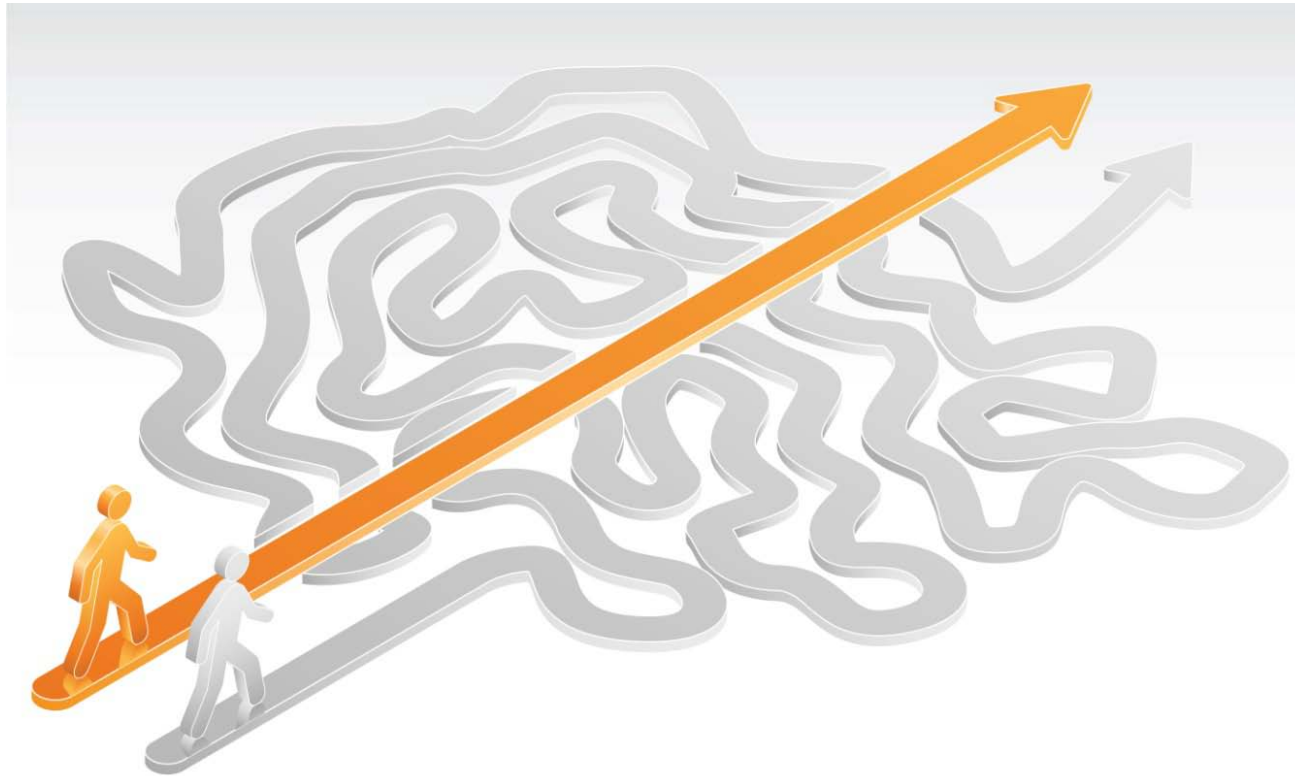
Collaboration and trusted views



"The right contacts at the right time"

**Provide a professional networking
platform for research scientists**

The problem isn't having too much information...



**...It's about accessing the right information
in an efficient and effective way**



Table of Contents

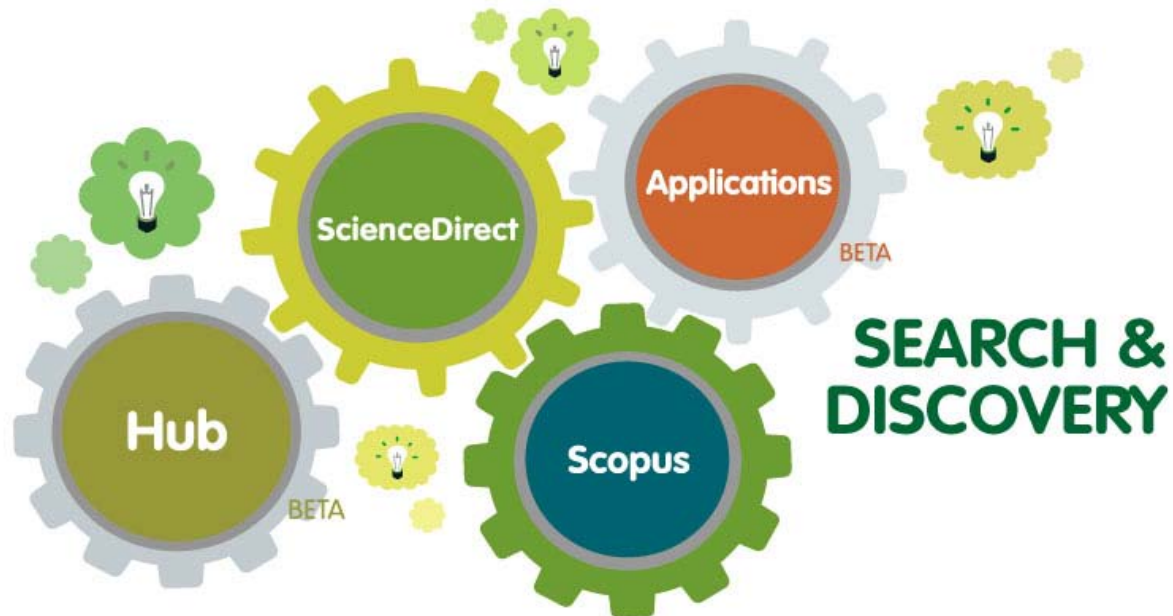
1. Why is Elsevier Launching SciVerse?

2. What is SciVerse?

3. When will I see SciVerse?

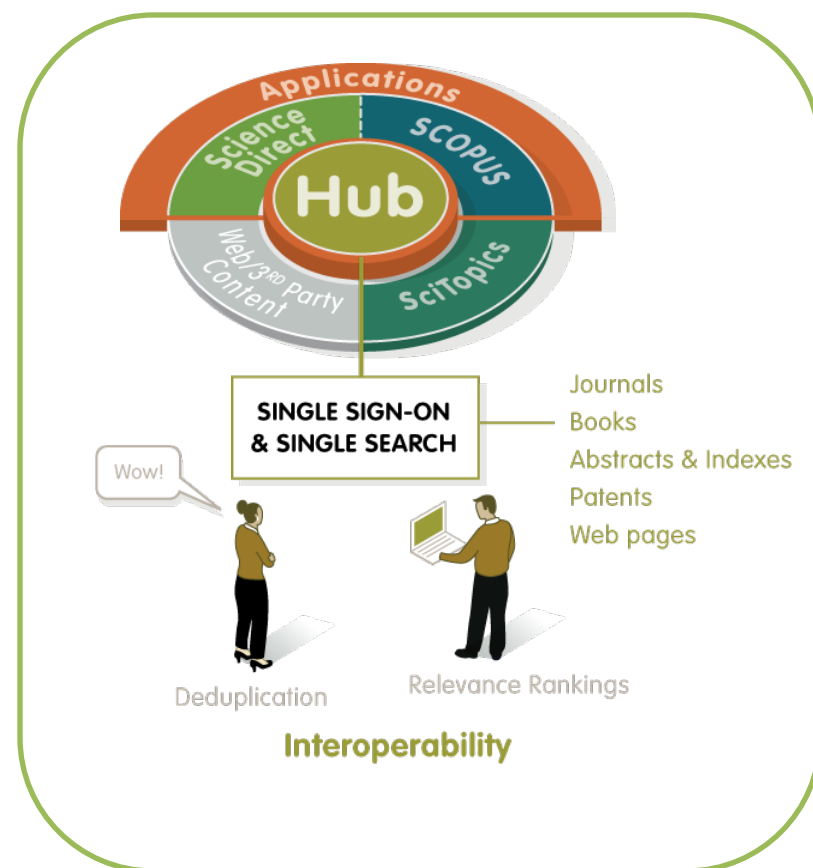
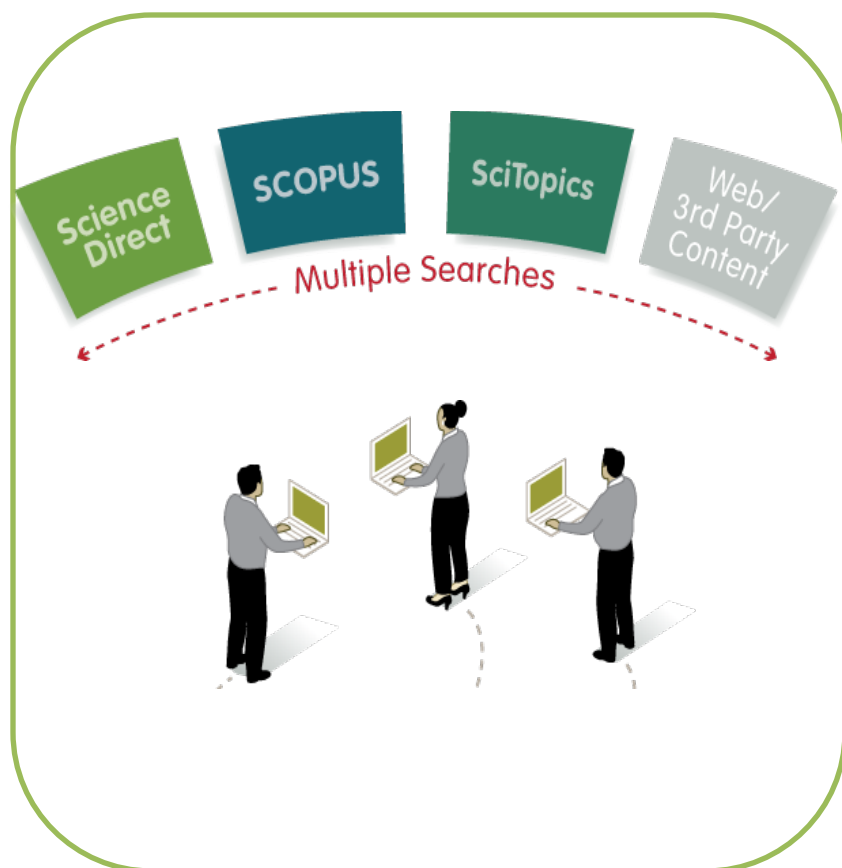
What is SciVerse?

SciVerse empowers the research community to accelerate science by opening ScienceDirect & Scopus content APIs for third-party application development. It will enable intelligent search and discovery across integrated content from ScienceDirect, Scopus, and the scientific web

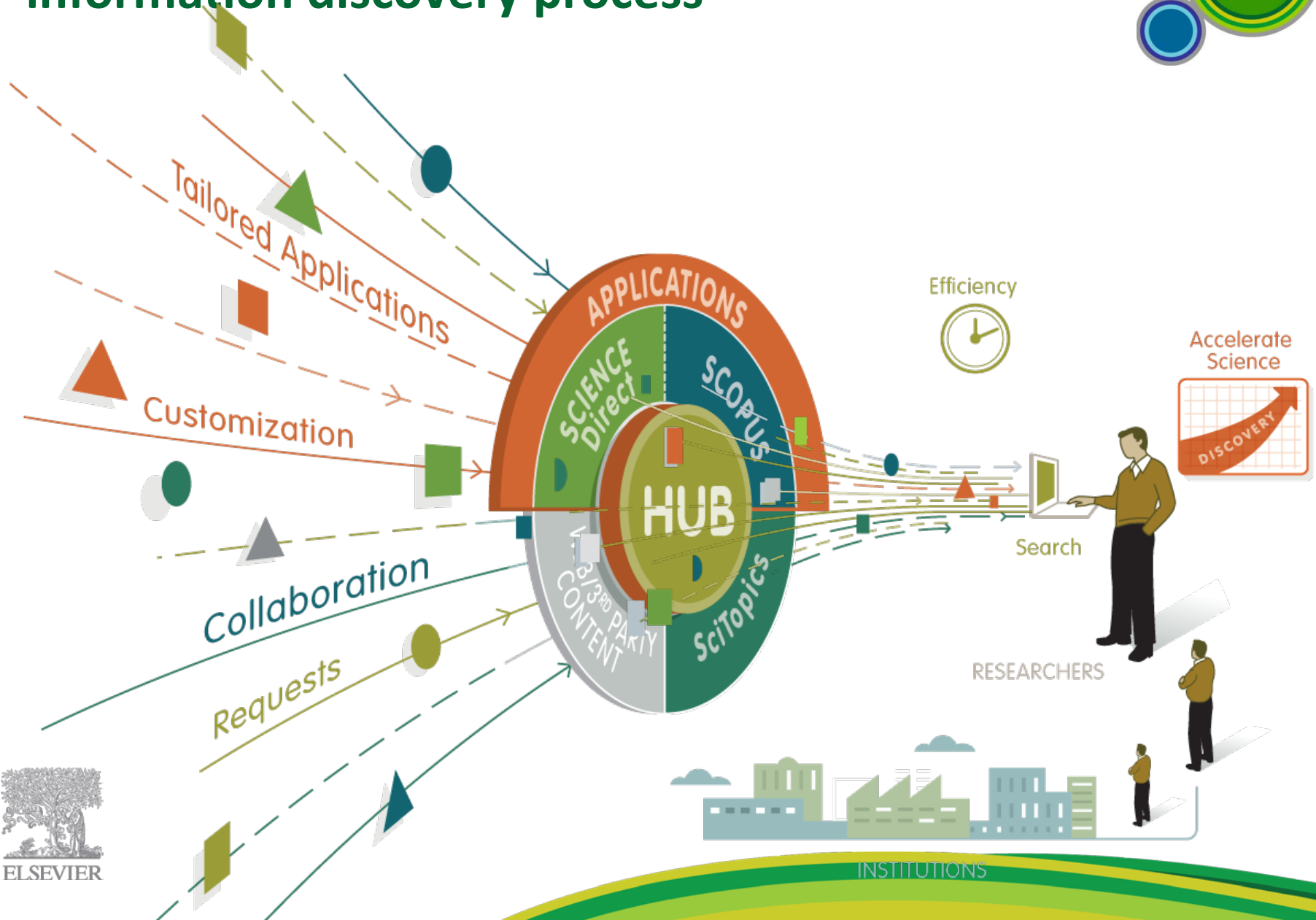
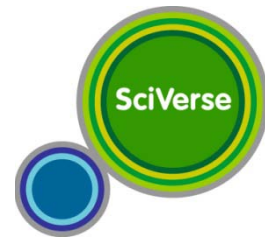


What is SciVerse?

Integrated Content & Discovery Tools + Productivity-Enhancing Applications

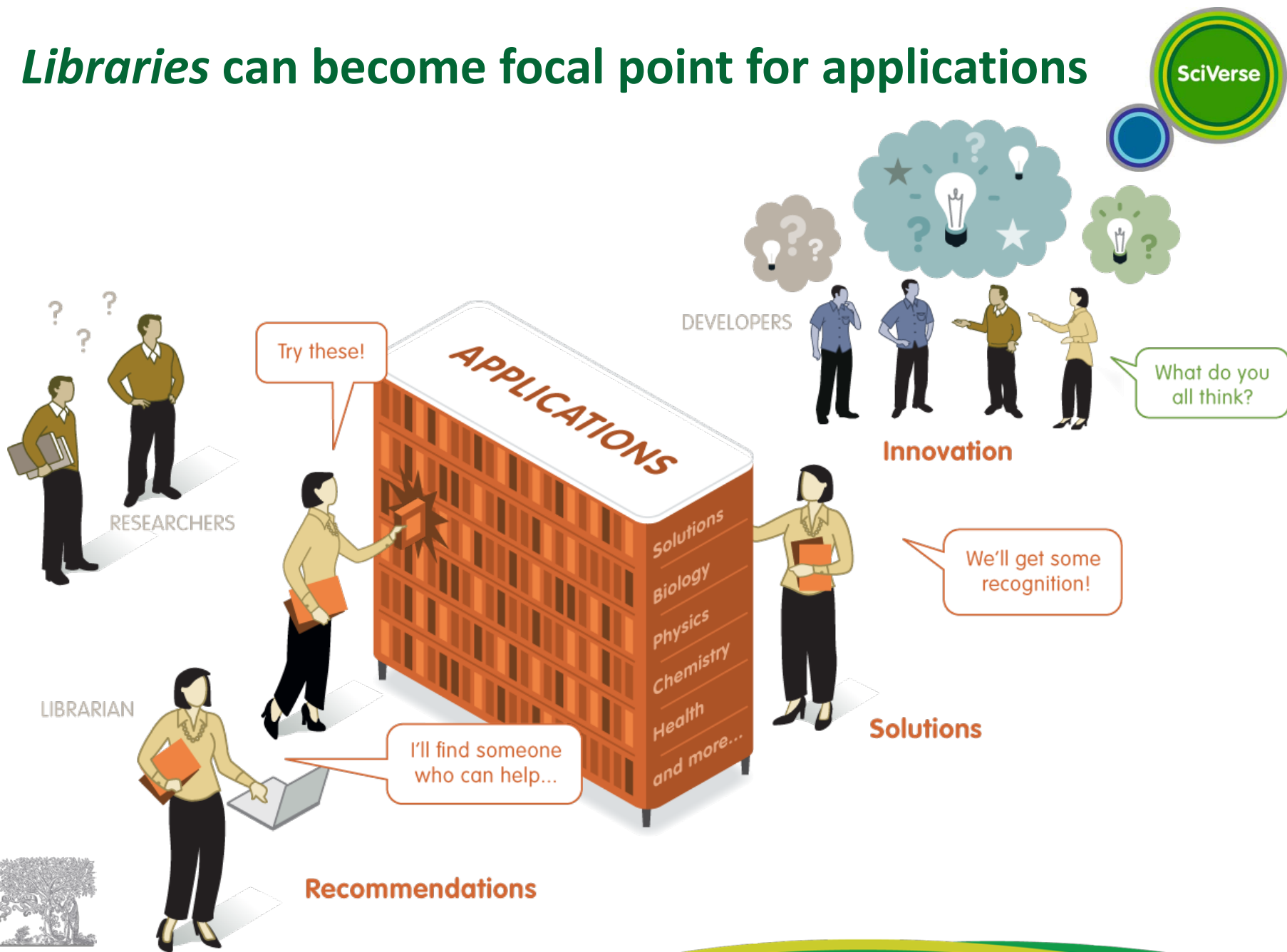


Researchers can save time and improve their information discovery process



Libraries can become focal point for applications

SciVerse



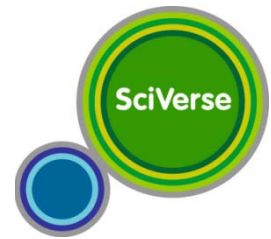


Table of Contents

1. Why is Elsevier Launching SciVerse?
2. What is SciVerse?
3. When will I see SciVerse?

SciVerse Launched in Multiple Phases, 2010-11

Launch of APIs

August 2010

- ◆ Limited API Beta release to Development partners

November 2010

- ◆ APIs available to developers

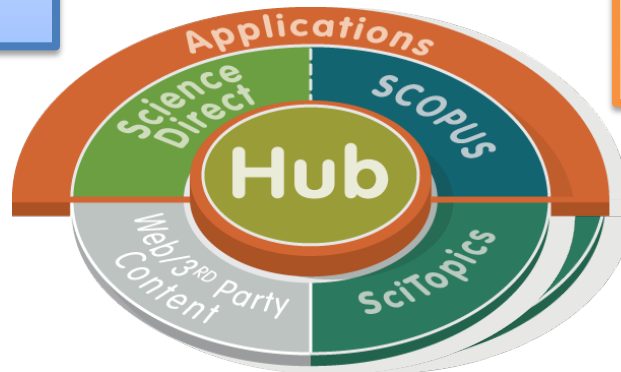
Launch of SciVerse Applications Beta

November 2010

- ◆ SciVerse Applications Beta available to select customers

January 2011

- ◆ SciVerse Applications Beta available all customers



Launch of SciVerse Platform and Hub Beta

August 2010

- ◆ ScienceDirect and Scopus updated to the SciVerse platform with increased interoperability
- ◆ SciVerse Hub Beta and three embedded Applications launched and available to customers at no additional cost

In August 2010, SciVerse Hub launched with three free Applications for all customers

SciVerse Platform

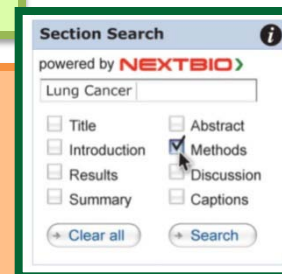
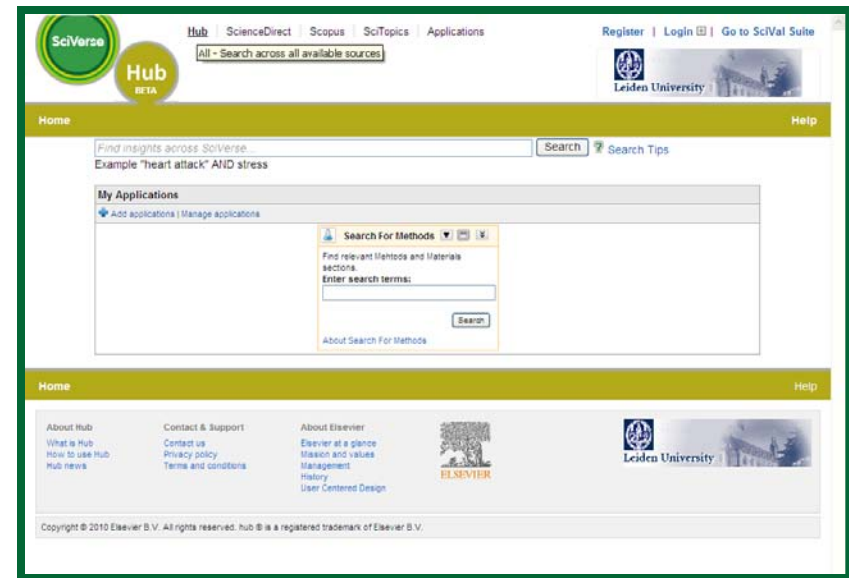
- **Single log-in** provides access to all licensed and free SciVerse products
- **Increased interoperability** and easier navigation between solutions

SciVerse Hub Beta

- **One search** across ScienceDirect, Scopus, and web content
- **Three embedded applications** for all users that include:

Preview of SciVerse Applications

- **Methods Section Search** for full text articles
- **Matching Sentences** displays query words in their full sentences
- **Prolific Author Search** finds the most “prolific authors” publishing articles about search



In August 2010, ScienceDirect and Scopus integrated on the SciVerse platform with increased interoperability

SciVerse Platform

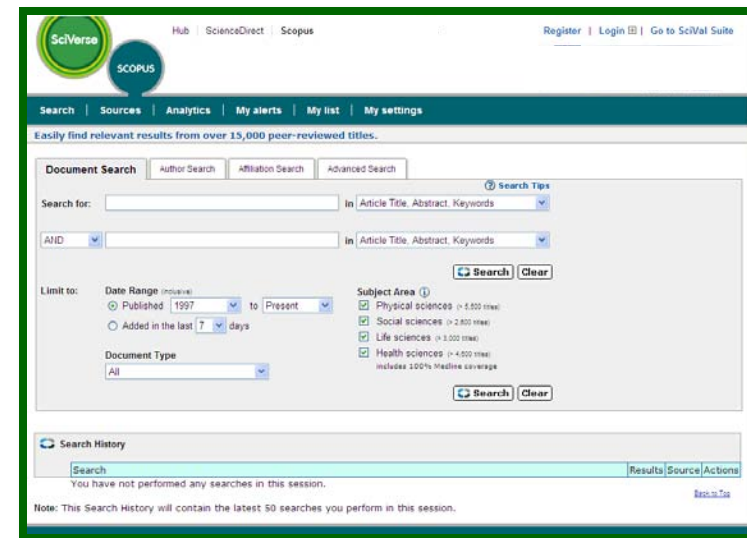
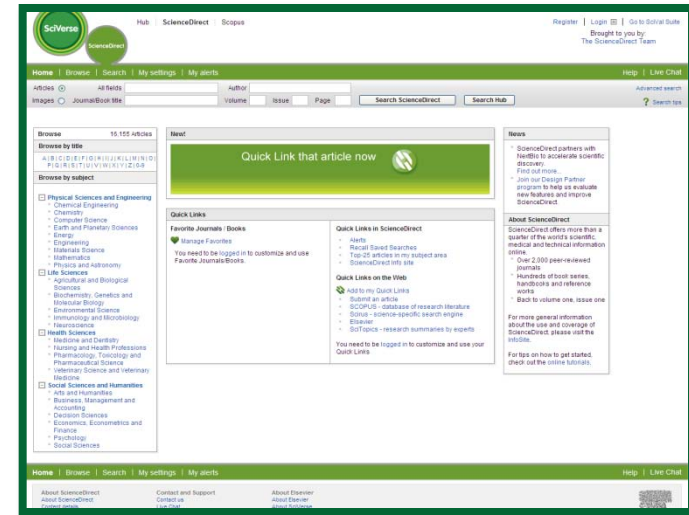
- **Single log-in** provides access to all licensed and free SciVerse products
- **Increased interoperability** and easier navigation between solutions

SciVerse ScienceDirect

- **Image Search** for full-text articles and books
- Integration of **REFLECT** application
- **Reference Work Helper** links to relevant reference works

SciVerse Scopus

- **Author Evaluation** tool visualizes author data
- **Scopus Enhanced Affiliation Profile** allows hierarchy of institutional relationships



Market Reaction

“ [SciVerse] is product R&D on the cheap with little downside in the short run and with great potential to expand ... turn[ing] away inevitably from intellectual property licensing and towards productivity enhancement.”

“ SciVerse begins to put in place the right kinds of plumbing to develop new generations of valuable Elsevier content services...in ways that many scientific and technical publishers are not yet ready to embrace.”

Market Reaction

“What SciVerse provides is ... a potentially powerful brand that can communicate a powerful and positive message to information professionals and researchers alike regarding the companies' investment in the future wellbeing of R&D. It's a bold start.”

“ #shallow: I'm disappointed in the blurk-yellow they chose for its theme... “



In November 2010, SciVerse Applications Beta launched with 10-15 free Applications for all customers

SciVerse Platform

- Single log-in provides access to all licensed and free SciVerse products
- Increased interoperability and easier navigation between solutions

SciVerse Hub Beta

- Improved relevancy and deduplication in Hub results
- Refine results by content type, including web sources

SciVerse Applications Beta

- Seek, Find, and Share applications in the Gallery
- Develop and share your own applications in SciVerse for Developers
- Gain recognition and prestige while also providing tools to help other researchers



Coming Soon...



Hub | ScienceDirect | Scopus | SciTopics | Applications

Home | **Application gallery** | My settings | Developers

Help

Application Gallery

Click on any of the applications below to learn more about how they help your Search and Discovery in SciVerse. Newest applications are listed first.



MostCited/MostRead

Be the first to review this application

SciVerse Hub, ScienceDirect

Free

Quickly find the most authoritative, most widely read and hottest articles with the MostCited/MostRead application. Powered by Scopus and ScienceDirect.



Matching Sentences

Be the first to review this application

SciVerse Hub

Free

The Matching Sentences application shows you your search terms embedded in their original, complete sentences in the results.



ScienceDirect Top25

★★★★☆ (4 reviews)

SciVerse Hub, ScienceDirect, Scopus

Free

Keep track of the latest trends and developments in your speciality with ScienceDirect's Top 25 Hottest Articles.



Methods Search

★★★★☆ (2 reviews)

SciVerse Hub

Free

The Methods Search application helps you find the methods you need for your research.

Coming Soon...

The screenshot displays the SciVerse Hub interface. At the top left, there are logos for SciVerse and Hub, with a BETA label. The top navigation bar includes links for Home, My settings, and Help. A search bar is present with the placeholder text "Find insights across SciVerse..." and an example "acute psychological stress". Below the search bar is a "My Applications" section containing two panels: "Methods Search" and "ScienceDirect Top25".

Hub | ScienceDirect | Scopus | SciTopics | Applications

Judson Dunham is logged in | Go to SciVal Suite

Home | My settings | Help

Find insights across SciVerse...
Example: acute psychological stress

Search ? Search Tips

My Applications [+ Add](#) | [Manage Applications](#) ?

Methods Search
Find relevant methods by searching only in the Materials and Methods section of Elsevier full text articles.
Find Methods
powered by **NEXTBIO**.

ScienceDirect Top25
Top 25 Hottest Articles
select your interest
[all subject areas]
browse top 25 archive
Current: April to June 2010

Coming Soon...

Search within results Search

Sort: Relevance | Date

Refine Results

Limit to Exclude

Content Sources

- ScienceDirect (7502)
- MD Consult (2953)
- Scopus (2880)
- University of Toronto T-Space (253)
- DIVA (205)

View more

Year

- 2010 (3547)
- 2009 (616)
- 2008 (308)
- 2007 (937)
- 2006 (966)

View more

Keyword

- stress
- psychological
- human
- article
- mental stress

View more

Limit to Exclude

1. **Acute Psychological Stress Reduces Working Memory-Related Activity in the Dorsolateral Prefrontal Cortex**
Biological Psychiatry, Volume 66, Issue 1, July 2009, Pages 25-32
Qin, Shaozheng ; Hermans, Erno J. ; van Marle, Hein J.F. ; Luo, Jing ; Fernández, Guillén

...control group; **Stress, stress** group. *p .05; **p .01; ***p 0.001. **Stress** Induction In the **stress**-induction group, **acute psychological stress** was induced by showing short movie clips in the MRI scanner containing scenes with extremely...

2. **Social Support, Social Intimacy, and Cardiovascular Reactions to Acute Psychological Stress**
Annals of Behavioral Medicine, January 2009, Pages 1-8
Phillips, A.C. ; Gallagher, S. ; Carroll, D.

...Exaggerated cardiovascular reactions to **psychological stress** are considered a risk factor for...attenuating cardiovascular reactivity to **stress**. Purpose: To examine the effects...on cardiovascular reactivity to **acute stress**. The variables were stranger...

3. **Preliminary evidence that acute and chronic daily psychological stress affect sexual arousal in sexually functional women**
Behaviour Research and Therapy, Volume 45, Issue 9, September 2007, Pages 2078-2089
ter Kuile, Moniek M. ; Vigeveno, Daan ; Laan, Ellen

...or prolonged **stress** could lead to...impact of an **acute psychological** stressor on genital...chronic daily **stress** has to be explored...effect of an **acute** stressor on sexual...responding, we used a **psychological stress** task (a frustrating...

4. **The effects of acute psychological stress on circulating inflammatory factors in humans: A review and meta-analysis**
Brain, Behavior, and Immunity, Volume 21, Issue 7, October 2007, Pages 901-912
Steptoe, A. ; Hamer, M. ; Chida, Y.

Stress influences circulating inflammatory...circulating inflammatory factors respond to **acute psychological stress** under laboratory conditions. However...r = 0.58, p 0.001) following **acute stress**, and marginal effects for CRP...

5. **MD Consult - Effect of acute psychological stress on the hypercoagulable state in subjects (spousal caregivers of patients with ...**
<http://www.mdconsult.com/das/journal/view/0/N/1/188038...>, August 2010

...Cardiology > Effect of **acute psychological stress** on the... Request CME...and Conditions Effect of **acute psychological stress** on the hypercoagulable state...2901564-8 Effect of **acute psychological stress** on the hypercoagulable state...

6. **Acute psychological stress: Effects on chemotaxis and cellular adhesion molecule expression**
Psychosomatic Medicine, Volume 65, Issue 4, July 2003, Pages 598-603
Redwine, L. ; Snow, S. ; Mills, P. ; Irwin, M.

...Objective: Activation of a **psychological stress** response increases autonomic...examine the effects of an **acute psychological stress** on chemotactic responses of...Conclusions: These data show that **acute stress** induces increase of chemotaxis...

7. **MD Consult - Acute psychological stress and the propensity to ventricular arrhythmias evidence for a linking mechanism...**

My Applications

Add | Manage Applications

Prolific Authors

- Steptoe, A.
- Bryant, R.A.
- Amario, A.
- Von Kanel, R.
- Mills, P.J.
- Carroll, D.
- Dimsdale, J.E...
- Kudielka, B.M...
- Anisman, H.
- Ehler, U.

content by **Scopus**
powered by **NEXTBIO**

Matching Sentences

For your query **acute psychological stress** we have matched

1371 sentences

608 paragraphs

Results are based on top documents that match your query **acute psychological stress** found in ScienceDirect. Would you like to see the complete sentences?
View Results

powered by **NEXTBIO**

ScienceDirect Top25

Top 25 Hottest Articles
select your interest

[all subject areas]

browse top 25 archive

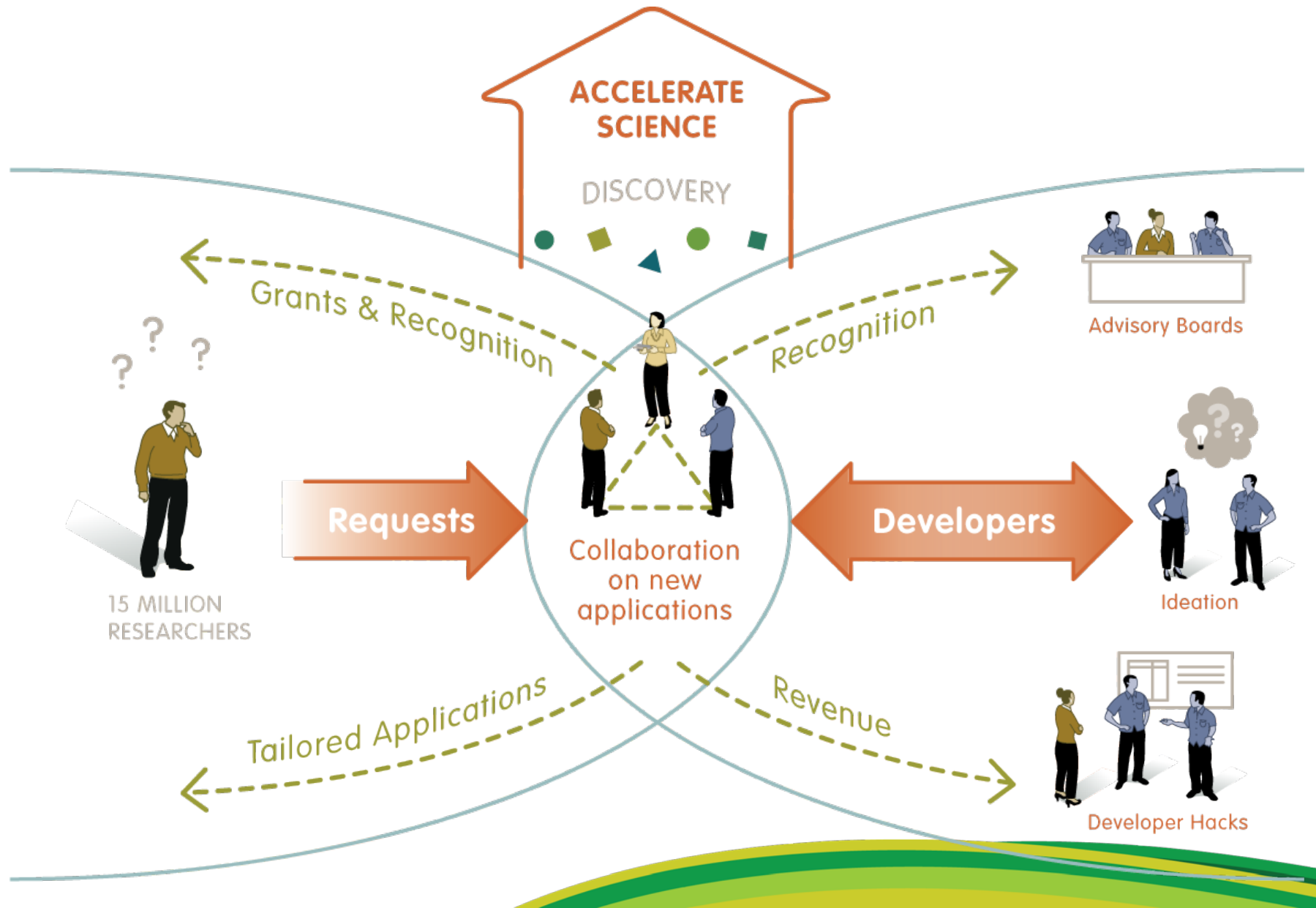
Current: April to June 2010

MostCitedMostRead

Cited | Read past | Read past 60

- Seminars in medicine of the Beth Israel Deaconess Medical Center: Protective and damaging effects of stress mediators (1657)

SciVerse provides an opportunity for the developers to collaborate with researchers



We plan to integrate apps from strategic partners to drive innovation and growth on SciVerse platform

Cool Technologies

the national centre for text mining

NaCTeM
The National Centre for Text Mining

You are in: Acromine

Acromine Demonstration

Terms of Use

By using the Acromine service, you agree to the general [Terms and Condition Use for the NaCTeM Website](#), in addition to the following Terms of Use for Acromine:

- Please let us know that you are using Acromine by [email](#).
- Please cite the following when publishing work that uses Acromine: Okazaki, N., Ananiadou, S. (2008) [Building an abbreviation dictionary using a term recognition approach](#). *Bioinformatics*, Volume 22, Number 24, pp. 3099-3105, Oxford University Press.
- Please credit and link to the NaCTeM website (<http://nactem.ac.uk>) in any electronic services based on the Acromine service or resulting data.
- Please [contact us](#) in advance if you plan to use the service for bulk processing. Acromine is a freely available service from the academic domain. This means that it is necessary to limit server load and give preference to individual users. Excessive server load may result in IP addresses or institutions being blocked from using the Acromine service. **There is a limit enforced on how many times unregistered users may use**

NaCTeM
The National Centre for Text Mining

KLEIO

New Search

NaCTeM Services
 Terms
 Acromine
 Classification
 Meta
 Info/Help

Sort by date | Sort by score
 Show articles with abstracts only

The current available categories:

- PROTEIN, GENE, METABOLITE, DISEASE, SYMPTOM, ORGAN,
- DIAGNOSTIC, THERAPEUTIC, PROCEDURE, CHEMICAL, PHENOMENON, PROCEDURE, (e.g. ASD, "cerebral blood flow")
- GENERAL_PHENOMENON, HUMAN_PHENOMENON, NATURAL_PHENOMENON, (Medical phenomenon or process, e.g. "UV radiation")
- REACTOR (Reagent or diagnostic aid, e.g. "nutrigen parasite", "sulphydryl reagent")
- ACRONYM, AUTHOR, PUBLICATIONTYPE (e.g. "journal article", "technical report")

More details about query syntax is described here:

Sample queries include:

- !ac (general word query)
- !ac:acromine (compound terms can be used as a query when quoted in double quotations(""))
- !ac:acromine (query with a semantic category)
- !author:Smith,J (query with an author name)
- !date:10000101 TO 20081231 (query to specify the publication date)
- !protein:2 AND DATE:10000101 TO 20081231 (compound query)

Note: Categories (e.g. PROTEIN, AUTHOR) and boolean parameters (e.g. AND, OR, NOT) should be uppercase.

Or, invoke [Smart Dictionary Loader](#) to find unigrams with the queries:



Vision & Leadership

DATA.GOV
EMPOWERING PEOPLE

Search our catalogs...

HOME DATA TOOLS COMMUNITY METRICS DIALOGUE GALLERY WHAT'S NEW

SEMANTIC WEB

As the Semantic Web (sometimes called **Web 3.0**) emerges, the US government is pleased to be in the vanguard. Data.gov is hosting demonstrations and documents that will help familiarize Data.gov users with this citizens and developers work with the government in creating a new generation of "linked data" mash ups.

Data.gov now hosts a set of Resource Description Framework (RDF) documents containing triples created by datasets into this format, making over 6.4 billion triples of open government data available to the community. Data.gov is here.

The URI scheme chosen is a very simple one for the time being, designed to allow users to easily explore and developed with RPI, one of the Data.gov community leaders, for a new encoding of datasets converted from We're looking forward to a design discussion to determine the best scheme for persistent and dereferencable international community and the World Wide Web Consortium to promote international standards for persist on the World Wide Web.

Rensselaer
why not change the world?™

Innovations at RPI

Running on Data.gov are a set of government-related demonstrations, originally created by a team of developers at the Tetherless World Constellation at Rensselaer Polytechnic Institute (RPI), which show how these RDF datasets can be used to build interactive visualizations using various popular visualization APIs. You can run the demonstrations here, served by our SPARQL endpoint that is powered by the Virtuoso linked data server. These demonstrations are also linked to pages at RPI that explain how they function and provide examples that you can cut and paste to build your own demos.

Appetite for Growth

STANFORD CENTER FOR BIOMEDICAL INFORMATICS RESEARCH
FORMERLY STANFORD MEDICAL INFORMATICS

HOME NEWS & ANNOUNCEMENTS NATIONAL RESOURCES RESEARCH LABS PROJECTS

ABOUT US
Contact Information
Maps & Information

PEOPLE

EVENTS

PUBLICATIONS

BMIR BULLETIN

PROJECTS

AFFILIATES PROGRAM

EDUCATION

RESEARCH LABS
Duo Lab
Muse Lab

NATIONAL RESOURCES

COMMUNITY

CONTACT US

BMIR Home > [About Us](#)

Stanford Center for Biomedical Informatics Research (BMIR)

As all aspects of science and society become increasingly information intensive, the need to understand, create, and apply new methods for modeling, managing, and acquiring information has never been greater.

Nowhere is this need more acute than in biomedicine, where scientists and practitioners routinely confront conflicting sources of knowledge and burgeoning numbers of data. Workers in biomedicine urgently require new methods that will enable them to access and apply discipline-specific knowledge, to make sense out of clinical and experimental data, to learn from those data, and to advance their underlying disciplines as a result.

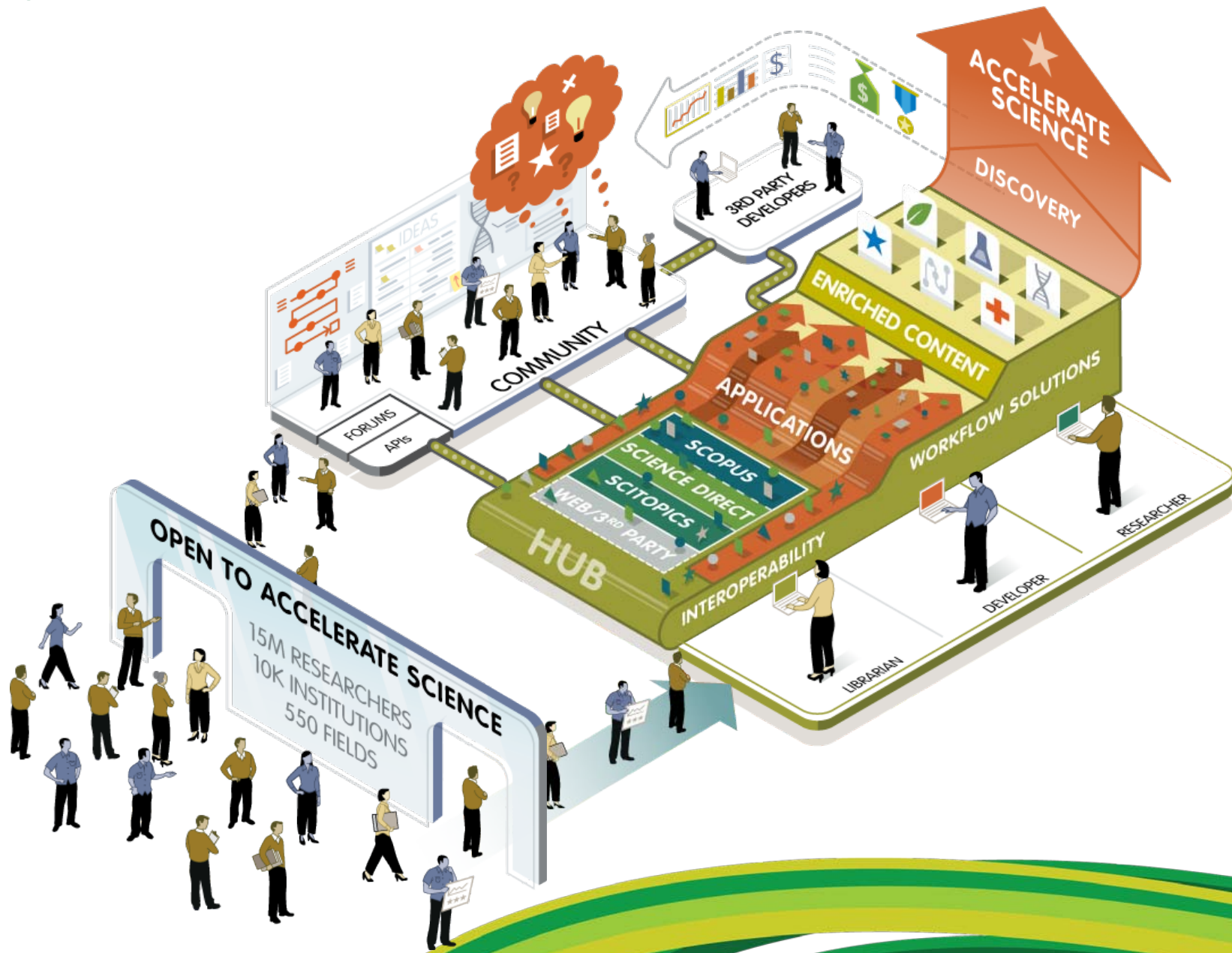
Research Labs

The Muse Lab

Lab Overview

Mark Musen's laboratory studies methods for building intelligent computer systems that support the work of clinicians and basic scientists. The overall goal is to support e-science and clinical decision making using systems that store encoded knowledge. The laboratory investigates the use of components for building knowledge-based systems, controlled terminologies and ontologies, and technology for the Semantic Web. For more than ten decades, Musen's group has worked to educate exceptional budding

Open to Accelerate Science



Thank You!

www.sciverse.com

e.ramossilva@elsevier.com